









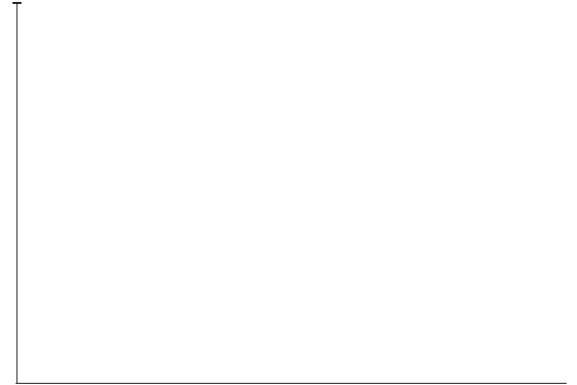




Wrangler®

ASAP 2020

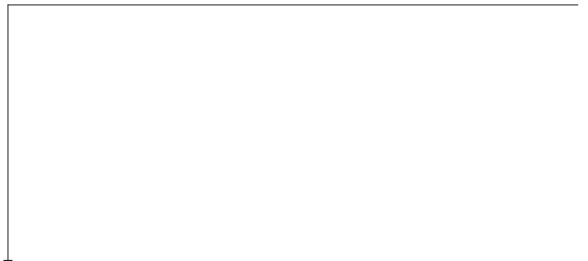
	
	
	
	
	



Wrangler was born from the desire to combine comfort, quality, and durability to apparel that met the demanding needs of consumers.

For over 70 years, Wrangler has stayed true to this idea.

Across a rich product portfolio spanning Western Wear, Workwear, Flame Resistant products, Rugged Wear, and our newest All Terrain Gear, Wrangler delivers the versatility and style for today while remaining true to its roots of comfort, quality, and durability.



WESTERN MEN'S

4-43

---

WESTERN WOMEN'S

44-57

---

YOUTH

58-71

---

RIGGS WORKWEAR®

72-85

---

WRANGLER FR®

86-99

---

WRANGLER® RUGGED WEAR®

100-105

---

ATG X WRANGLER®

106-111

---

FIT GUIDELINES

114-119

---

INDEX & SPECIAL SERVICES

120-123

W

# Wrangler®

WESTERN MEN'S

COWBOY CUT® | ORIGINAL FIT | ACTIVE FLEX



Authentic Five Pocket Styling  
Active Flex Denim  
Fits Over Boots  
Imported  
18 1/8" Leg Opening



**13MAFGK** | Stonewash  
13 oz. Active Flex Denim  
Sizes | A62K  
Started: Fall 2019



**13MAFPW** | Prewashed Indigo  
13 oz. Active Flex Denim  
Sizes | A62K  
Started: Fall 2019

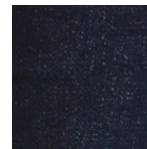
COWBOY CUT® | SLIM FIT | ACTIVE FLEX



Authentic Five Pocket Styling  
Active Flex Denim  
Fits Over Boots  
Imported  
17 1/2" - 16 1/2" Leg Opening



**936AFGK** | Stonewash  
13 oz. Active Flex Denim  
Sizes | A62K  
Started: Fall 2020



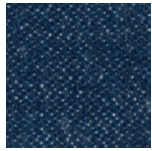
**936AFPW** | Prewashed Indigo  
13 oz. Active Flex Denim  
Sizes | A62K  
Started: Fall 2020

		A62K															
		WAIST	27	28	29	30	31	32	33	34	35	36	38	40	42	44	46
Inseam	30																
	32																
	34																
	36																
	38																

COYBOY CUT® | 13 | ORIGINAL FIT



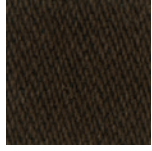
Authentic Five Pocket Styling  
100% Cotton, Heavyweight Denim  
Fits Over Boots  
Imported  
18 1/2" x 16 3/4" Leg Opening



**0013MWZ  
13MWZXS**  
a Sizes | A100  
Sizes | A20A  
Rigid Indigo  
14.75 oz.  
Sanforized® Denim



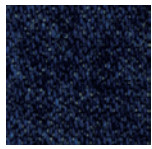
**13MWZPW**  
a Prewashed Indigo  
14.75 oz. Denim  
Sizes | A80B



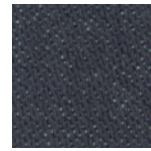
**13MWZKL**  
a Black Chocolate  
14.5 oz. Denim  
Sizes | A44D



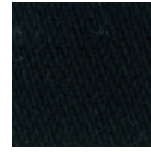
**13MWZGK**  
a Stonewashed  
15.25 oz. Denim  
Sizes | A72B



**13MWZDD**  
a Dark Stone  
14.75 oz. Denim  
Sizes | A54C



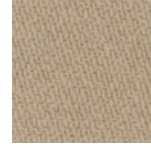
**13MWZCG**  
a Prewashed Charcoal  
13.5 oz.  
Sanforized® Denim  
Sizes | A55J



**13MWZWK**  
a Shadow Black  
14.25 oz. Denim  
Sizes | A80B



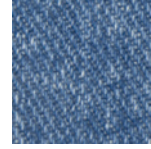
**13MWZWI**  
a White  
12 oz. Denim  
Sizes | A44D



**13MWZTN**  
a Prewashed Tan  
13.75 oz. Denim  
Sizes | A55J



**13MWZGH**  
a Bleach  
15.25 oz. Denim  
Sizes | A54C



**13MWZAW**  
a Antique Wash  
14.5 oz. Denim  
Sizes | A54C

		A20A															
WAIST		29	30	31	32	33	34	36	38	40	42	44	46	48	50	52	54
Inseam	32																
	34																
	38																
	40																
	44																

		A72B																	
WAIST		28	29	30	31	32	33	34	35	36	38	40	42	44	46	48	50	52	54
Inseam	30																		
	32																		
	34																		
	36																		
	38																		
40																			

		A44D											
WAIST		28	29	30	31	32	33	34	35	36	38	40	42
Inseam	30												
	32												
	34												
	36												

		A54C											
WAIST		28	29	30	31	32	33	34	35	36	38	40	42
Inseam	30												
	32												
	34												
	36												
38													

		A55J													
WAIST		28	29	30	31	32	33	34	35	36	38	40	42	44	46
Inseam	30														
	32														
	34														
	36														
38															

		A80B																	
WAIST		27	28	29	30	31	32	33	34	35	36	37	38	40	42	44	46	48	50
Inseam	30																		
	32																		
	34																		
	36																		
	38																		
40																			

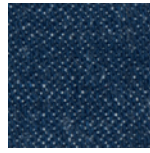
		A100															
WAIST		27	28	29	30	31	32	33	34	35	36	37	38	40	42	44	46
Inseam	29																
	30																
	31																
	32																
	33																
	34																
	36																
	38																
40																	

Sanforized® is a registered trademark of CTB Holding LLC.

COWBOY CUT® | 936 | SLIM FIT



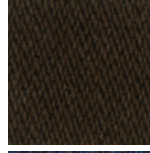
Authentic Five Pocket Styling  
 100% Cotton, Heavyweight Denim  
 Fits Over Boots  
 Imported  
 17 1/2" - 16 1/2" Leg Opening



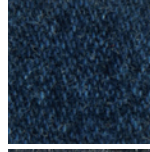
**0936DEN**  
 a Rigid Indigo  
 14.75 oz.  
 Sanforized® Denim  
 Sizes | A78A



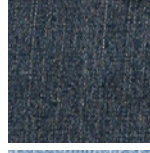
**0936PWD**  
 a Prewashed Indigo  
 14.75 oz. Denim  
 Sizes | A62A



**0936KCL**  
 a Black Chocolate  
 14.5 oz. Denim  
 Sizes | A46Q



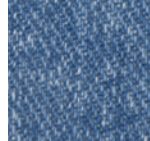
**0936NTF**  
 a Nightfire  
 14.75 oz. Denim  
 Sizes | A41F



**0936RST**  
 a Rough Stone  
 14.5 oz. Denim  
 Sizes | A51C



**0936GBH**  
 a Bleach  
 15.25 oz. Denim  
 Sizes | A51C



**0936ATW**  
 a Antique Wash  
 14.5 oz. Denim  
 Sizes | A51C



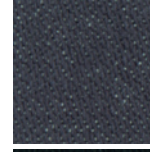
**0936TAN**  
 a Prewashed Tan  
 13.75 oz. Denim  
 Sizes | A41F



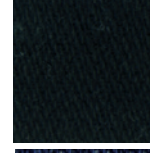
**0936GBK**  
 a Stonewashed  
 15.25 oz. Denim  
 Sizes | A51C



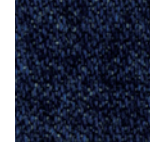
**0936WHI**  
 a White  
 12 oz. Denim  
 Sizes | A46Q



**0936CHG**  
 a Prewashed Charcoal  
 Grey  
 13.5 oz.  
 Sanforized® Denim  
 Sizes | A41F



**0936WBK**  
 a Shadow Black  
 14.25 oz. Denim  
 Sizes | A62A



**0936DSD**  
 a Dark Stone  
 14.75 oz. Denim  
 Sizes | A59B

A78A		WAIST	27	28	29	30	31	32	33	34	35	36	38	40	42
Inseam	30														
	31														
	32														
	33														
	34														
	36														
	40														

A62A		WAIST	27	28	29	30	31	32	33	34	35	36	38	40	42	44
Inseam	29															
	30															
	32															
	34															
	36															
	38															

A46Q		WAIST	27	28	29	30	31	32	33	34	35	36	38
Inseam	29												
	30												
	32												
	34												
	36												

A41F		WAIST	27	28	29	30	31	32	33	34	35	36	38
Inseam	30												
	32												
	34												
	36												

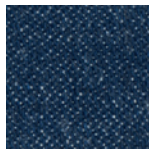
A51C		WAIST	27	28	29	30	31	32	33	34	35	36	38	40	42
Inseam	30														
	32														
	34														
	36														
	38														

A59B		WAIST	27	28	29	30	31	32	33	34	35	36	38	40	42
Inseam	29														
	30														
	32														
	34														
	36														
	38														

Sanforized® is a registered trademark of CTB Holding LLC.

Authentic Five Pocket Styling  
 Fits Over Boots  
 Imported  
 18 3/4" x 17" Leg Opening

COWBOY CUT® | 31 | RELAXED FIT



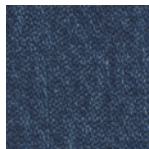
**31MWZDN**  
 a

Rigid Indigo  
 14.75 oz.  
 100% Cotton  
 Sanforized® Denim  
 Sizes | A60G



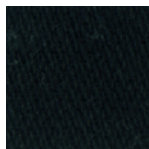
**31MWZPW**  
 a

Prewashed Indigo  
 14.75 oz.  
 100% Cotton Heavyweight Denim  
 Sizes | A66C



**31MWZGK**  
 a

Stonewashed  
 15.25 oz.  
 100% Cotton Heavyweight Denim  
 Sizes | A53A



**31MWZWK**  
 a

Shadow Black  
 14.25 oz.  
 100% Cotton Heavyweight Denim  
 Sizes | A53A

		A66C																
		WAIST	29	30	31	32	33	34	35	36	37	38	39	40	42	44	46	48
Inseam	30																	
	32																	
	34																	
	36																	
	38																	

		A53A													
		WAIST	29	30	31	32	33	34	35	36	37	38	40	42	44
Inseam	30														
	32														
	34														
	36														
	38														

		A60G														
		WAIST	29	30	31	32	33	34	35	36	37	38	40	42	44	46
Inseam	30															
	32															
	34															
	36															
	38															
	40															



47 REGULAR FIT  
36 SLIM FIT

PREMIUM PERFORMANCE  
**Cowboy Cut®**



- Authentic Five Pocket Styling
- More Comfortable Waist
- Deep Front Pockets
- Functional Watch Pocket
- Felled Inseam
- Imported
- Fits Over Boots

PREMIUM PERFORMANCE | 47 | REGULAR FIT



PREMIUM PERFORMANCE | 36 | SLIM FIT



**0047MWZ**  
**a** Rigid  
14.75 oz.  
100% Cotton  
Heavyweight Denim  
Sizes | A64C



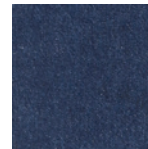
**47MWZPW**  
**a** Prewash  
14.75 oz.  
100% Cotton  
Heavyweight Denim  
Sizes | A65G



**47MWZDS**  
**a** Dark Stone  
14.75 oz.  
100% Cotton  
Heavyweight Denim  
Sizes | A54C



**47MWZSW**  
**a** Stonewash  
14.75 oz.  
100% Cotton  
Heavyweight Denim  
Sizes | A45F



**36MWZPD**  
**a** Prewash  
14.75 oz.  
100% Cotton  
Heavyweight Denim  
Sizes | A59D



**36MWZDS**  
**a** Dark Stone  
14.75 oz.  
100% Cotton  
Heavyweight Denim  
Sizes | A56D



**36MWZSW**  
**a** Stonewash  
14.75 oz.  
100% Cotton  
Heavyweight Denim  
Sizes | A59D

A54C	
WAIST	28 29 30 31 32 33 34 35 36 37 38 40 42
Inseam 30	. . . . .
32	. . . . .
34	. . . . .
36	. . . . .
38	. . . . .

A64C	
WAIST	29 30 31 32 33 34 35 36 37 38 40 42 44 46
Inseam 30	. . . . .
32	. . . . .
34	. . . . .
36	. . . . .
38	. . . . .
40	. . . . .

A59D	
WAIST	27 28 29 30 31 32 33 34 35 36 38 40 42
Inseam 29	. . . . .
30	. . . . .
32	. . . . .
34	. . . . .
36	. . . . .
38	. . . . .

A65G	
WAIST	29 30 31 32 33 34 35 36 37 38 40 42 44 46 48 50
Inseam 30	. . . . .
32	. . . . .
34	. . . . .
36	. . . . .
38	. . . . .
40	. . . . .

A45F	
WAIST	29 30 31 32 33 34 35 36 38 40 42
Inseam 30	. . . . .
32	. . . . .
34	. . . . .
36	. . . . .
38	. . . . .

A56D	
WAIST	27 28 29 30 31 32 33 34 35 36 38 40 42
Inseam 29	. . . . .
30	. . . . .
32	. . . . .
34	. . . . .
36	. . . . .
38	. . . . .

- Authentic Five Pocket Styling
- More Comfortable Waist
- Deep Front Pockets
- Functional Watch Pocket
- Felled Inseam
- Fits Over Boots
- Imported



MOISTURE WICKING  
TECHNOLOGY

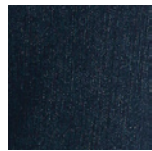


4-WAY FLEX  
FOR COMFORT



2X LONGER LASTING

PREMIUM PERFORMANCE | 47 | REGULAR FIT



**47MAVMR** | Midnight Rinse  
**a** | 12 oz. Denim  
Sizes | A55Q

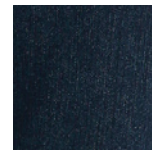


**47MAVVS** | Vintage Stone  
**a** | 12 oz. Denim  
Sizes | A55Q

PREMIUM PERFORMANCE | 36 | SLIM FIT



**36MAVVS** | Vintage Stone  
**a** | 12 oz. Denim  
Sizes | A55Q



**36MAVMR** | Midnight Rinse  
**a** | 12 oz. Denim  
Sizes | A55Q

47 REGULAR FIT  
36 SLIM FIT

PREMIUM PERFORMANCE  
**ADVANCED  
COMFORT**  
Cowboy cut



- Authentic Five Pocket Styling
- More Comfortable Waist
- Deep Front Pockets
- Functional Watch Pocket
- Felled Inseam
- Fits Over Boots
- Imported



**MOVES WITH YOU**



**2X LONGER  
LASTING**

ADVANCED COMFORT | 47 | REGULAR FIT



ADVANCED COMFORT | 36 | SLIM FIT



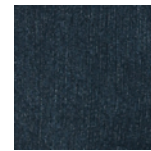
**47MACSB** | Stone Bleach  
14 oz. Denim  
Sizes | A55Q



**47MACMS** | Mid Stone  
14 oz. Denim  
Sizes | A55Q



**47MACMT** | Mid Tint  
14 oz. Denim  
Sizes | A55Q



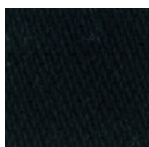
**36MACDT** | Dark Tint  
13.5 oz. Denim  
Sizes | A55Q



**36MACMS** | Mid Stone  
14 oz. Denim  
Sizes | A55Q

		A55Q												
WAIST		29	30	31	32	33	34	35	36	38	40	42	44	46
Inseam	30	.	.	.	.	.	.	.	.	.	.	.	.	.
	32	.	.	.	.	.	.	.	.	.	.	.	.	.
	34	.	.	.	.	.	.	.	.	.	.	.	.	.
	36	.	.	.	.	.	.	.	.	.	.	.	.	.
	38	.	.	.	.	.	.	.	.	.	.	.	.	.

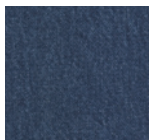
WRANGLER® | SLIM FIT



**0938BLK** | Black  
14 oz. Denim  
66% Cotton/34% Polyester  
Sizes | A41E



**0937STR** | Navy  
13 oz. Denim  
66% Cotton/34% Polyester  
Sizes | A42D

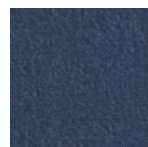


**0938NAV** | Indigo Stretch  
14 oz. Denim  
66% Cotton/34% Polyester  
Sizes | A41E

A42D		28	29	30	31	32	33	34	35	36	38	40	42
Inseam	30	.	.	.	.	.	.	.	.	.	.	.	.
	32	.	.	.	.	.	.	.	.	.	.	.	.
	34	.	.	.	.	.	.	.	.	.	.	.	.
	36	.	.	.	.	.	.	.	.	.	.	.	.

A41E		28	29	30	31	32	33	34	35	36	38	40	42
Inseam	30	.	.	.	.	.	.	.	.	.	.	.	.
	32	.	.	.	.	.	.	.	.	.	.	.	.
	34	.	.	.	.	.	.	.	.	.	.	.	.
	36	.	.	.	.	.	.	.	.	.	.	.	.

WRANGLER® | REGULAR FIT



**0947STR** | Navy Stretch  
13 oz. Denim  
98% Cotton/2% Lycra  
Sizes | A47B

SIZE A47B		30	31	32	33	34	35	36	38	40	42	44	46	48	50	52	54
Inseam	30	.	.	.	.	.	.	.	.	.	.	.	.	.	.	.	.
	32	.	.	.	.	.	.	.	.	.	.	.	.	.	.	.	.
	34	.	.	.	.	.	.	.	.	.	.	.	.	.	.	.	.
	36	.	.	.	.	.	.	.	.	.	.	.	.	.	.	.	.

LYCRA® is a registered trademark of Invista North America, S.A.R.L.

WRANGLER® | TRADITIONAL BOOT



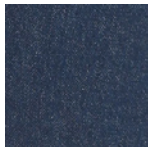
SLIM FIT



0935NAV  
a

Navy  
14.75 oz.  
100% Cotton Denim  
Sizes | A53E

REGULAR FIT



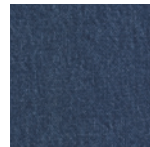
0945NAV  
a

Navy  
14.75 oz.  
100% Cotton Denim  
Sizes | A73A

PBR® | BOOT CUT



SLIM FIT



28PBRAS  
a

Authentic Stone  
13 oz.  
100% Cotton Denim  
Sizes | A49C

		A73A																		
		WAIST	29	30	31	32	33	34	35	36	38	40	42	44	46	48	50	52	54	56
Inseam	29																			
	30		•	•	•	•	•	•	•	•	•	•	•	•	•	•	•	•	•	•
	31				•	•	•	•	•	•	•	•	•	•	•	•	•	•	•	•
	32			•	•	•	•	•	•	•	•	•	•	•	•	•	•	•	•	•
	33				•	•	•	•	•	•	•	•	•	•	•	•	•	•	•	•
	34				•	•	•	•	•	•	•	•	•	•	•	•	•	•	•	•
	38				•	•	•	•	•	•	•	•	•	•	•	•	•	•	•	•

		A53E										
		WAIST	28	29	30	31	32	33	34	35	36	38
Inseam	30		•	•	•	•	•	•	•	•	•	•
	31			•	•	•	•	•	•	•	•	•
	32			•	•	•	•	•	•	•	•	•
	33				•	•	•	•	•	•	•	•
	34				•	•	•	•	•	•	•	•
	38				•	•	•	•	•	•	•	•

		A49C												
		WAIST	28	29	30	31	32	33	34	35	36	38	40	42
Inseam	30		•	•	•	•	•	•	•	•	•	•	•	•
	32			•	•	•	•	•	•	•	•	•	•	•
	34				•	•	•	•	•	•	•	•	•	•
	36				•	•	•	•	•	•	•	•	•	•
	38				•	•	•	•	•	•	•	•	•	•

PBR® is a registered trademark of Professional Bullriders, Inc.

Black/Silver Patch  
100% Cotton Denim  
Sits at Waist  
Fits Over Boots  
Imported

SILVER EDITION® | ORIGINAL FIT



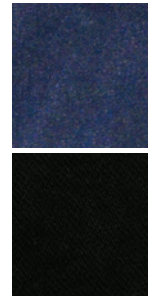
Black/Silver Patch  
100% Cotton Denim  
Sits At Waist  
Boot Cut  
Imported

SILVER EDITION® | SLIM FIT



**13MSEWK** | Black  
14.25 oz. Denim  
Sizes | A36A

**13MSEDD** | Dark Denim  
14.75 oz. Denim  
Sizes | A36A



**933SEDD** | Dark Denim  
14.75 oz. Denim  
Sizes | A45P

**933SEWK** | Black  
14.25 oz. Denim  
Sizes | A45P

		A36A											
WAIST		28	29	30	31	32	33	34	35	36	38	40	42
Inseam	30	.	.	.	.	.	.	.	.	.	.	.	.
	32	.	.	.	.	.	.	.	.	.	.	.	.
	34	.	.	.	.	.	.	.	.	.	.	.	.
	36	.	.	.	.	.	.	.	.	.	.	.	.

		A45P											
WAIST		28	29	30	31	32	33	34	35	36	38	40	42
Inseam	29	.	.	.	.	.	.	.	.	.	.	.	.
	30	.	.	.	.	.	.	.	.	.	.	.	.
	32	.	.	.	.	.	.	.	.	.	.	.	.
	34	.	.	.	.	.	.	.	.	.	.	.	.
	36	.	.	.	.	.	.	.	.	.	.	.	.

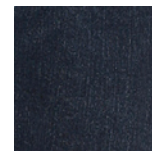
REGULAR FIT

**Wrangler**  
**GEORGE STRAIT**  
 COWBOY CUT COLLECTION



Sits At Waist  
 Fits Over Boots  
 Imported

GEORGE STRAIT | 47 | REGULAR FIT



**47MGSDA**  
 a Dark Amarillo  
 12.5 oz. Stretch Denim  
 Sizes | A51F



**47MGSSB**  
 a Steel Blue  
 12.5 oz. Stretch Denim  
 Sizes | A51F

		A51F											
		WAIST	29	30	31	32	33	34	35	36	38	40	42
Inseam	30	.	.	.	.	.	.	.	.	.	.	.	.
	32	.	.	.	.	.	.	.	.	.	.	.	.
	34	.	.	.	.	.	.	.	.	.	.	.	.
	36	.	.	.	.	.	.	.	.	.	.	.	.
	38	.	.	.	.	.	.	.	.	.	.	.	.



**Wrangler**  
**GEORGE STRAIT**  
 COWBOY CUT COLLECTION

ORIGINAL FIT

Sits At Waist  
 Fits Over Boots  
 Imported

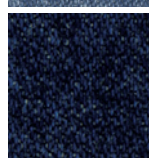
GEORGE STRAIT | 13 | ORIGINAL FIT



**13MGSHD** | Heavy Dark Stone  
 a | 15.25 oz. Denim  
 Sizes | A51F



**13MGSSW** | Stone Wash  
 a | 14.5 oz. Denim  
 Sizes | A51F



**13MGSDS** | Dark Stone  
 a | 13.75 oz. Denim  
 Sizes | A51F

		A51F											
		WAIST	29	30	31	32	33	34	35	36	38	40	42
Inseam	30		•	•	•	•	•	•	•	•	•	•	•
	32		•	•	•	•	•	•	•	•	•	•	•
	34		•	•	•	•	•	•	•	•	•	•	•
	36		•	•	•	•	•	•	•	•	•	•	•
	38		•	•	•	•	•	•	•	•	•	•	•



SLIM FIT  
RELAXED FIT

Wrangler  
GEORGE STRAIT  
COWBOY CUT COLLECTION



GEORGE STRAIT | 936 | SLIM FIT



Sits At Waist  
Fits Over Boots  
Imported



**936GSHD**  
a

Heavy Dark Stone  
15.25 oz. Denim  
Sizes | A49D

GEORGE STRAIT | 31 | RELAXED FIT



Sits At Waist  
Fits Over Boots  
Imported



**31MGSHD**  
a

Heavy Dark Stone  
15.25 oz. Denim  
Sizes | A55L

		A49D												
		WAIST	28	29	30	31	32	33	34	35	36	38	40	42
Inseam	30		•	•	•	•	•	•	•	•	•	•	•	•
	32		•	•	•	•	•	•	•	•	•	•	•	•
	34		•	•	•	•	•	•	•	•	•	•	•	•
	36		•	•	•	•	•	•	•	•	•	•	•	•
	38		•	•	•	•	•	•	•	•	•	•	•	•

		A55L														
		WAIST	29	30	31	32	33	34	35	36	37	38	39	40	42	44
Inseam	30		•	•	•	•	•	•	•	•	•	•	•	•	•	•
	32		•	•	•	•	•	•	•	•	•	•	•	•	•	•
	34		•	•	•	•	•	•	•	•	•	•	•	•	•	•
	36		•	•	•	•	•	•	•	•	•	•	•	•	•	•
	38		•	•	•	•	•	•	•	•	•	•	•	•	•	•

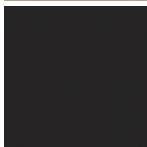
WRANGLER® CASUALS | FLAT FRONT



Sits at Waist  
Relaxed Seat and Thigh  
Permanent Center Crease  
Wrinkle Resist  
Comfortable Stretch Twill Fabric  
Imported



**00096KH**  
a Khaki  
8 oz.  
98% Cotton/2% Spandex  
Stretch Twill  
Sizes | A54B



**00096BK**  
a Black  
8 oz.  
98% Cotton/2% Spandex  
Stretch Twill  
Sizes | A54B

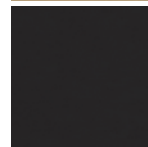
WRANGLER® CASUALS | PLEATED



Sits at Waist  
Relaxed Seat and Thigh  
Permanent Center Crease  
Wrinkle Resist  
Comfortable Stretch Twill Fabric  
Imported



**00097KH**  
a Khaki  
8 oz.  
98% Cotton/2% Spandex  
Stretch Twill  
Sizes | A54B



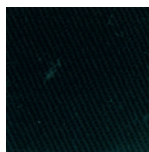
**00097BK**  
a Black  
8 oz.  
98% Cotton/2% Spandex  
Stretch Twill  
Sizes | A54B

		A54B														
		WAIST	28	29	30	31	32	33	34	35	36	38	40	42	44	46
Inseam	30															
	32															
	34															
	36															
	38															

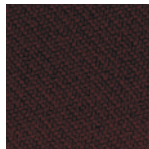
WRANCHER® | REGULAR FIT



Soil Release Finish  
8 oz. 100% Polyester Twill  
Fits Over Boots  
Imported



**00082BK**  
a Black  
8 oz.  
100% Polyester Twill  
Sizes | A52K



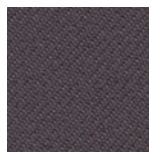
**00082BN**  
a Brown  
8 oz.  
100% Polyester Twill  
Sizes | A52K



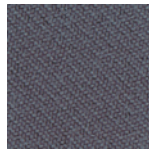
**00082NV**  
a Navy  
8 oz.  
100% Polyester Twill  
Sizes | A52K



**00082HU**  
a Heather Blue  
8 oz.  
100% Polyester Twill  
Sizes | A43C



**00082CL**  
a Coal  
8 oz.  
100% Polyester Twill  
Sizes | A43C



**00082GY**  
a Grey  
8 oz.  
100% Polyester Twill  
Sizes | A52K



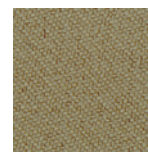
**00082KH**  
a Khaki  
8 oz.  
100% Polyester Twill  
Sizes | A52K



**00082BH**  
a Birch  
8 oz.  
100% Polyester Twill  
Sizes | A52K



**00082HT**  
a Heather Tan  
8 oz.  
100% Polyester Twill  
Sizes | A43C



**00082TN**  
a Tan  
8 oz.  
100% Polyester Twill  
Sizes | A52K



**00082HG**  
a Heather Grey  
8 oz.  
100% Polyester Twill  
Sizes | A43C



**00082HK**  
a Heather Black  
8 oz.  
100% Polyester Twill  
Sizes | A43C



**00082HO**  
a Heather Dark Chocolate  
8 oz.  
100% Polyester Twill  
Sizes | A43C

		A52K																
		WAIST	28	29	30	31	32	33	34	35	36	38	40	42	44	46	48	50
Inseam	29																	
	30																	
	31																	
	32																	
	34																	

		A43C													
		WAIST	28	29	30	31	32	33	34	35	36	38	40	42	44
Inseam	29														
	30														
	32														
	33														
	34														

Sits Below Waist  
Relaxed Seat and Thigh  
Fits Over Boots  
Imported

01 COMPETITION | RELAXED FIT



**01MWXDB** | Deep Blue  
a | 13.5 oz. Denim  
Sizes | A56G  
Started: Holiday 2013

Sits Below Waist  
Slim Seat and Thigh  
Fits Over Boots  
Imported

02 COMPETITION | SLIM FIT



**02MWXDL** | Dillon  
a | 12.5 oz. Denim  
Sizes | A56G  
Started: Fall 2015



**01MWXRW** | River Wash  
a | 13.5 oz. Denim  
EXTENDED SIZES | A63H  
Started: Holiday 2012



**02MWXPY** | Payson  
a | 12.5 oz. Denim  
Sizes | A56G  
Started: Fall 2015

Sits Below Waist  
Relaxed Seat and Thigh  
Fits Over Boots  
Imported  
Same Great Fit as 33s!

**ADVANCED  
COMFORT**



MOVES WITH YOU



**2X LONGER  
LASTING**

01 COMPETITION | RELAXED FIT



**01MACRB**  
**a** Root Beer  
12 oz. Denim  
Sizes | A56G  
Started: Fall 2016

Sits Below Waist  
Slim Seat and  
Thigh  
Fits Over Boots  
Imported  
Same Great Fit  
as 42s!

02 COMPETITION | SLIM FIT



**02MACBA**  
**a** Barrel  
12 oz. Denim  
Sizes | A56G  
Started: Summer 2016



**01MACBA**  
**a** Barrel  
12 oz. Denim  
Sizes | A56G  
Started: Fall 2016



**02MACRB**  
**a** Root Beer  
12 oz. Denim  
Sizes | A63H  
Started: Summer 2016

A56G		
WAIST	27 28 29 30 31 32 33 34 35 36 38 40 42	
Inseam	30	
	32	
	34	•
	36	•
	38	•
	40	•

A63H		
WAIST	27 28 29 30 31 32 33 34 35 36 38 40 42 44 46	
Inseam	30	
	32	
	34	•
	36	•
	38	•
	40	•

Sits at Waist  
Regular Seat and  
Thigh  
Slightly Tapered Leg  
Imported

WRANGLER 20X | 22 | ORIGINAL FIT



**22MWXVM**  
**a** | Vintage Denim  
14.5 oz. Denim  
Sizes | A52H  
Started: Spring 1999

Sits Below Waist  
Relaxed Seat and  
Thigh  
Tapered Leg  
Imported

WRANGLER 20X | 23 | RELAXED FIT



**23MWXVB**  
**a** | Vintage Blue  
13.25 oz. Denim  
Sizes | A54D  
Started: Spring 2008

		A52H											
		WAIST	29	30	31	32	33	34	35	36	38	40	42
Inseam	30												
	32												
	34												
	36												
	38												
	40												

		A54D											
		WAIST	29	30	31	32	33	34	35	36	38	40	42
Inseam	30												
	32												
	34												
	36												
	38												
	40												

Sits Below Waist  
Extra Relaxed Seat and Thigh  
Straight Leg  
Imported

WRANGLER 20X | 33 | EXTREME RELAXED FIT



**33MWXVM** | Vintage Midnight  
**a** | 12 oz. Denim  
Sizes | A57H  
Started: Holiday 2008



**33MWXWL** | Wells  
**a** | 12.5 oz. Denim  
Sizes | A47K  
Started: Fall 2017



**33MWXAB** | Appleby  
**a** | 12.5 oz. Stretch Denim  
Sizes | A47K  
Started: Spring 2019

		A57H													
		WAIST	27	28	29	30	31	32	33	34	35	36	38	40	42
Inseam	30														
	32														
	34														
	36														
	38														
40															

		A47K											
		WAIST	28	29	30	31	32	33	34	36	38	40	42
Inseam	30												
	32												
	34												
	36												
38													

Sits Below Waist  
Slim Seat and Thigh  
Boot Cut  
Imported

WRANGLER 20X | 42 | VINTAGE BOOT



**42MWXMD**  
a  
EXTENDED SIZES

Midland  
12 oz. Stretch Denim  
Sizes | A54N  
Started: Fall 2016



**42MWXGG**  
a

Glasgow  
11.5 oz. Stretch Denim  
Sizes | A47K  
Started: Fall 2018



**42MWXLB**  
a

Light Blue  
12.5 oz. Denim  
Sizes | A47K  
Started: Spring 2012



**42MWXBT**  
a

Bryant  
10.25 oz. Stretch Denim  
Sizes | A47K  
Started: Summer 2017



**42MWXRD**  
a

River Denim  
12.5 oz. Denim  
Sizes | A42G  
Started: Holiday 2011

		A54N													
		WAIST	28	29	30	31	32	33	34	36	38	40	42	44	46
Inseam	30	•	•	•	•	•	•	•	•	•	•	•	•	•	•
	32	•	•	•	•	•	•	•	•	•	•	•	•	•	•
	34	•	•	•	•	•	•	•	•	•	•	•	•	•	•
	36	•	•	•	•	•	•	•	•	•	•	•	•	•	•
	38	•	•	•	•	•	•	•	•	•	•	•	•	•	•

		A42G										
		WAIST	28	29	30	31	32	33	34	36	38	
Inseam	30	•	•	•	•	•	•	•	•	•	•	
	32	•	•	•	•	•	•	•	•	•	•	
	34	•	•	•	•	•	•	•	•	•	•	
	36	•	•	•	•	•	•	•	•	•	•	
	38	•	•	•	•	•	•	•	•	•	•	



44 SLIM STRAIGHT

Wrangler<sup>®</sup>  
20X



Sits Below Waist  
Slim Seat and Thigh  
Straight Leg  
Fits Over Boots  
Imported

WRANGLER 20X | 44 | SLIM STRAIGHT



**44MWXDN**  
**a**

Denver  
11.5 oz. Stretch Denim  
Sizes | A47K  
Started: Spring 2018



**44MWXRB**  
**a**

Red Bluff  
11.75 oz. Stretch Denim  
Sizes | A47K  
Started: Spring 2018



**44MWXMA**  
**a**

McAllen  
12 oz. Stretch Denim  
Sizes | A47K  
Started: Fall 2018

		A47K											
		WAIST	28	29	30	31	32	33	34	36	38	40	42
Inseam	30												
	32												
	34												
	36												
	38												



Sits Lower on Waist  
Relaxed Seat and  
Thigh  
Bootcut  
Fits Over Boots  
Imported

WRANGLER RETRO® | RELAXED BOOT



WRT20CR



Crest  
13.25 oz. Denim  
Sizes | A58T  
Started: Fall 2012



WRT20WB



Worn Black  
11.25 oz. Denim  
Sizes | A46D  
Started: Holiday 2012

A46D

WAIST	29	30	31	32	33	34	35	36	38	40	42
30	.	.	.	.	.	.	.	.	.	.	.
32	.	.	.	.	.	.	.	.	.	.	.
34	.	.	.	.	.	.	.	.	.	.	.
36	.	.	.	.	.	.	.	.	.	.	.
38	.	.	.	.	.	.	.	.	.	.	.

A58T

WAIST	29	30	31	32	33	34	35	36	38	40	42	44	46
30	.	.	.	.	.	.	.	.	.	.	.	.	.
32	.	.	.	.	.	.	.	.	.	.	.	.	.
34	.	.	.	.	.	.	.	.	.	.	.	.	.
36	.	.	.	.	.	.	.	.	.	.	.	.	.
38	.	.	.	.	.	.	.	.	.	.	.	.	.



**WRT20AB**  
 a Abilene  
 10.5 oz. Denim  
 Sizes | A46D  
 Started: Spring 2015



**WRT20FL**  
 a Falls City  
 11.25 oz. Stretch Denim  
 Sizes | A46D  
 Started: Fall 2019



**WRT20RT**  
 a Rocky Top  
 13.5 oz. Denim  
 Sizes | A46D  
 Started: Fall 2011



**WRT20TB**  
 a True Blue  
 13 oz. Denim  
 Sizes | A46D  
 Started: Fall 2008



**WRT20JH**  
 a Jackson Hole  
 12.5 oz. Stretch Denim  
 Sizes | A58T  
 Started: Fall 2017  
 EXTENDED SIZES

Sits Lower on Waist  
Slim Seat and Thigh  
Bootcut  
Fits Over Boots  
Imported

WRANGLER RETRO® | SLIM BOOT



**WLT77LY**  
 Layton  
 12.5 oz. Stretch Denim  
 Sizes | A54M  
**Started: Fall 2016**

**EXTENDED SIZES**



**77MWZBR**  
 Bearcreek  
 12.5 oz. Stretch Denim  
 Sizes | A46D  
**Started: Holiday 2017**



**77MWZDX**  
 Dax  
 10.5 oz. Stretch Denim  
 Sizes | A46D  
**Started: Holiday 2019**

WRANGLER RETRO® | SLIM BOOT



**77MWZWO** <sup>a</sup> Worn In  
13 oz. Denim  
Sizes | A46D  
Started: Holiday 2007



**77MWZGL** <sup>a</sup> Greeley  
12.5 oz. Stretch Denim  
Sizes | A46D  
Started: Fall 2018



**77MWZRW** <sup>a</sup> River Wash  
13 oz. Denim  
Sizes | A46D  
Started: Fall 2010



**77MWZBB** <sup>a</sup> Banjo Blue  
11.75 oz. Denim  
Sizes | A46D  
Started: Fall 2011

		A 5 4 M													
		WAIST	29	30	31	32	33	34	35	36	38	40	42	44	46
Inseam	30														
	32														
	34														
	36														
	38														

		A 4 6 D											
		WAIST	29	30	31	32	33	34	35	36	38	40	42
Inseam	30												
	32												
	34												
	36												
	38												

Sits Lower on Waist  
Slim Seat and Thigh  
Straight Leg  
Fits Over Boots  
Imported

WRANGLER RETRO® | SLIM STRAIGHT



**88MWZJK**  
a  
Jacksboro  
12.5 oz. Stretch Denim  
Sizes | A46D  
Started: Spring 2020



**WLT88CW**  
a  
Cottonwood  
11 oz. Stretch Denim  
Sizes | A54M  
Started: Fall 2016



**WLT88BZ**  
a  
Bozeman  
12.5 oz. Stretch Denim  
Sizes | A54M  
Started: Fall 2016



**88MWZDK**  
a  
Dark Knight  
12.25 oz. Denim  
Sizes | A46D  
Started: Spring 2011

		A54M												
WAIST		29	30	31	32	33	34	35	36	38	40	42	44	46
Inseam	30	.	.	.	.	.	.	.	.	.	.	.	.	.
	32	.	.	.	.	.	.	.	.	.	.	.	.	.
	34	.	.	.	.	.	.	.	.	.	.	.	.	.
	36	.	.	.	.	.	.	.	.	.	.	.	.	.
	38	.	.	.	.	.	.	.	.	.	.	.	.	.

SLIM STRAIGHT

Wrangler  
RETRO®



WRANGLER RETRO® | SLIM STRAIGHT



**88MWZRT** Rocky Top  
**a** 13.5 oz. Denim  
 Sizes | A46D  
 Started: Spring 2012



**88MWZPD** Portland  
**a** 11.5 oz. Stretch Denim  
 Sizes | A46D  
 Started: Fall 2019



**88MWZJM** Jerome  
**a** 11.25 oz. Stretch Denim  
 Sizes | A46D  
 Started: Fall 2018



**88MWZMN** Macon  
**a** 12.25 oz. Stretch Denim  
 Sizes | A46D  
 Started: Fall 2015

		A46D										
WAIST		29	30	31	32	33	34	35	36	38	40	42
Inseam	30	.	.	.	.	.	.	.	.	.	.	.
	32	.	.	.	.	.	.	.	.	.	.	.
	34	.	.	.	.	.	.	.	.	.	.	.
	36	.	.	.	.	.	.	.	.	.	.	.
	38	.	.	.	.	.	.	.	.	.	.	.



WESTERN WORKSHIRTS | CLASSIC FIT



**MS3127B** | Indigo Denim  
(Firm Finish)  
7.25 oz.  
100% Cotton  
1/12 Solid, Hanging  
Sizes | 011G



**70131MW** | Chambray  
(Non-indigo)  
4.5 oz.  
65% Polyester/35% Cotton  
1/12 Solid, Folded  
Sizes | 010X

Spread Collar

Authentic Western Yokes

Two Authentic Western Spade Flap Pockets with Snap Closure

Wrangler® Logo Ribbon Label on Left Pocket

Pencil Slot on Left Pocket

Wrangler® "W" Decorative Logo Stitch on Pockets

Authentic Western Three Snap Cuff with One Snap Sleeve Placket  
Imported



WESTERN WORKSHIRTS | CLASSIC FIT | LONG SLEEVE DENIM



70127SW



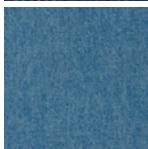
**70127MW**  
a Indigo Denim (Firm Finish)  
7.25 oz.  
100% Cotton  
1/12 Solid, Folded  
Sizes | 028C



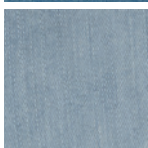
**MS70119**  
a Indigo Denim (Firm Finish)  
7.25 oz.  
100% Cotton  
1/12 Solid, Hanging  
Sizes | 011B



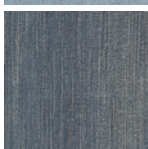
**70127BT**  
a Indigo Denim (Firm Finish)  
7.25 oz.  
100% Cotton  
1/12 Solid, Folded  
Sizes | 015I



**70127SW**  
a Stonewash  
7.25 oz.  
100% Cotton  
1/12 Solid, Hanging  
Sizes | 008S



**MS1040B**  
a Med. Bleach Blue  
7.25 oz.  
100% Cotton  
1/12 Solid, Hanging  
Sizes | 008S

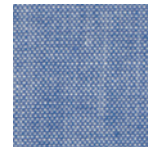


**MS1039W**  
a Antique Blue  
7.25 oz. 100% Cotton | Indigo Slub Denim  
Enzyme Stone Bleaching, Grinding & Tinting,  
Garment Wash | 1/12 Solid, Hanging  
Sizes | 008S  
Boys' | BS1039W

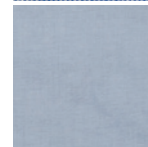
WESTERN WORKSHIRTS | CLASSIC FIT | LONG SLEEVE CHAMBRAY



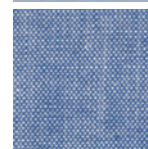
70130MW



**70136MW**  
a Chambray  
5 oz.  
100% Cotton  
1/12 Solid, Folded  
Sizes | 031A



**70130MW**  
a Chambray (Non-indigo)  
4.5 oz.  
65% Polyester/35% Cotton  
1/12 Solid, Folded  
Sizes | 031A



**MS70919**  
a Chambray Blue (Firm Finish)  
4.25 oz  
100% Cotton  
1/12 Solid, Hanging  
Sizes | 011B

**028C**

	14 <sup>1/2</sup>	15	15 <sup>1/2</sup>	16	16 <sup>1/2</sup>	17	17 <sup>1/2</sup>	18
32	•	•	•	•	•	•	•	•
33	•	•	•	•	•	•	•	•
34	•	•	•	•	•	•	•	•
35	•	•	•	•	•	•	•	•
36	•	•	•	•	•	•	•	•

**015I**

	16 <sup>1/2</sup>	17 <sup>1/2</sup>	18	18 <sup>1/2</sup>	19	20	
34	•	•	•	•	•	•	BIG
35	•	•	•	•	•	•	BIG
36	•	•	•	•	•	•	TALL
37	•	•	•	•	•	•	TALL
38	•	•	•	•	•	•	TALL

SIZE CONVERSIONS

STANDARD SIZE	NECK SIZE	SLEEVE LENGTH
S	14 1/2	33
M	15 1/2	34
L	16 1/2	35
XL	17 1/2	36
XXL	18 1/2	36
LT	16 1/2	37
XLT	17 1/2	37
2XT	18 1/2	38
3XT	19 1/2	38
1X	17 1/2	35
2X	18 1/2	35
3X	19 1/2	36
4X	20	36

SIZE CHART

**011G**

	S	M	L	XL	XXL	LT	XLT	2XLT	3XLT	2X	3X
REG	•	•	•	•	•	•	•	•	•	•	•
TALL	•	•	•	•	•	•	•	•	•	•	•
BIG	•	•	•	•	•	•	•	•	•	•	•

**011B**

	S	M	L	XL	XXL	LT	XLT	2XLT	3XLT	3X	4X
REG	•	•	•	•	•	•	•	•	•	•	•
TALL	•	•	•	•	•	•	•	•	•	•	•
BIG	•	•	•	•	•	•	•	•	•	•	•

**008S**

	S	M	L	XL	XXL	LT	XLT	2XLT
REG	•	•	•	•	•	•	•	•
TALL	•	•	•	•	•	•	•	•

**010X**

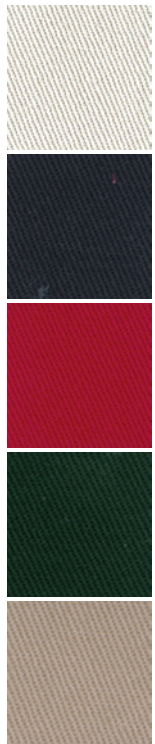
	14 <sup>1/2</sup>	15	15 <sup>1/2</sup>	16	16 <sup>1/2</sup>	17	17 <sup>1/2</sup>	18	19	20
REG	•	•	•	•	•	•	•	•	•	•
TALL	•	•	•	•	•	•	•	•	•	•

WORKSHIRT BASICS TWILL | CLASSIC FIT

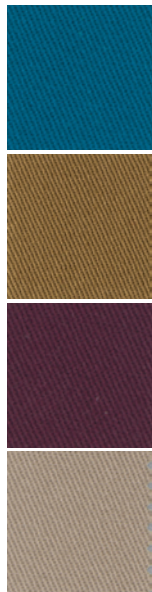


70140MW

- Spread Collar
- Authentic Western Yokes
- Two Authentic Western Spade Flap Pockets with Snap Closure
- Wrangler® Logo Ribbon Label on Left Pocket
- Pencil Slot on Left Pocket
- Wrangler® "W" Decorative Logo Stitch on Pockets
- Authentic Western Three Snap Cuff with One Snap Sleeve Placket
- Imported



- MS71319** Stone  
7.25 oz.  
100% Cotton  
1/12 Solid, Hanging  
Sizes | 010Y
- MS70819** Black  
7.25 oz.  
100% Cotton  
1/12 Solid, Hanging  
Sizes | 011B
- MS70619** Red  
7.25 oz.  
100% Cotton  
1/12 Solid, Hanging  
Sizes | 010Y
- MS70519** Black Forest Green  
7.25 oz.  
100% Cotton  
1/12 Solid, Hanging  
Sizes | 011B
- MS70319** Khaki  
7.25 oz.  
100% Cotton  
1/12 Solid, Hanging  
Sizes | 011B



- MS71419** Dark Teal  
7.25 oz.  
100% Cotton  
1/12 Solid, Hanging  
Sizes | 010Y
- MS71519** Rawhide  
7.25 oz.  
100% Cotton  
1/12 Solid, Hanging  
Sizes | 010Y
- MS70719** Red Oxide  
7.25 oz.  
100% Cotton  
1/12 Solid, Hanging  
Sizes | 011B
- 70140MW** Khaki  
7.25 oz.  
100% Cotton  
1/12 Solid, Folded  
Sizes | 031A

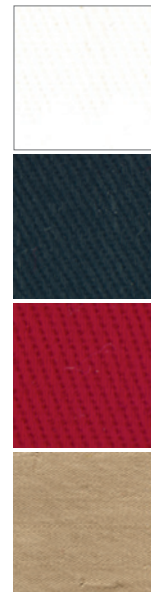
010Y										
	M	L	XL	XXL	LT	XLT	2XLT	3XLT	3X	4X
REG	•	•	•	•						
TALL					•	•	•	•		
BIG									•	•

031A											
	14 <sup>1/2</sup>	15	15 <sup>1/2</sup>	16	16 <sup>1/2</sup>	17	17 <sup>1/2</sup>	18	18 <sup>1/2</sup>	19	20
Sleeve	•	•	•	•	•	•	•	•	•	•	•
REG	•	•	•	•	•	•	•	•	•	•	•
BIG											•
TALL											•



MP3522R

- Long Sleeves
- Buttondown Collar
- Authentic Western Back Yoke
- No Front Yoke
- Two Spade Pockets with Button Closure
- Two Button Adjustable Cuffs
- Imported
- 1/12 Solid, Hanging



- 71135CH** White  
5 oz.  
100% Cotton  
Lightweight Solid Twill  
Sizes | 010W
- MP4282X** Black  
5 oz.  
100% Cotton  
Lightweight Solid Twill  
Sizes | 010W
- MP3522R** Red  
5 oz.  
100% Cotton  
Lightweight Solid Twill  
Sizes | 010W
- MP3482T** Tan  
5 oz.  
100% Cotton  
Lightweight Solid Twill  
Sizes | 010W

010W										
	S	M	L	XL	XXL	LT	XLT	2XLT	2X	3X
REG	•	•	•	•	•					
TALL						•	•	•		
BIG									•	•

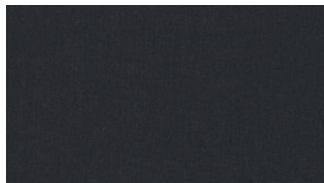
PREMIUM PERFORMANCE ADVANCED COMFORT WORKSHIRTS | CLASSIC FIT



- Spread Collar
- Authentic Western Yokes
- Two Authentic Snap Flap Pockets
- Pencil Slot at Left Pocket
- “W” Stitching on Pocket
- Moves With You
- Riser Label on Left Pocket Flap
- Double Needle Top Stitching at Armholes and Shoulders
- Authentic Western Three Snap Cuffs
- Serged Hemtails
- Snaps
- Imported
- 1/12 Solid, Hanging



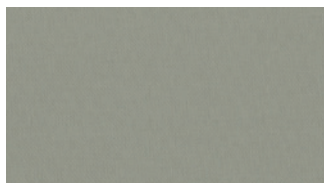
MACW02G



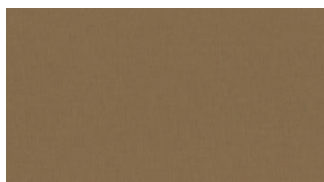
**MACW01D**  
a Denim  
7.1 oz.  
76% Cotton/  
23% Polyester/  
1% Spandex  
Sizes | 012R



**MACW02G**  
a Turquoise  
7.2 oz.  
98% Cotton/  
2% Spandex  
Twill  
Sizes | 012R



**MACW03H**  
a Cement  
7.2 oz.  
98% Cotton/  
2% Spandex  
Twill  
Sizes | 012R



**MACW04E**  
a Brown  
7.2 oz.  
98% Cotton/  
2% Spandex  
Twill  
Sizes | 012R



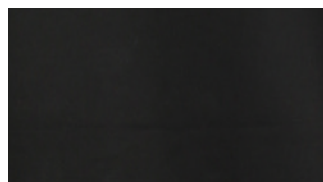
**MACW05B**  
a Blue  
7.2 oz.  
98% Cotton/  
2% Spandex  
Twill  
Sizes | 012R



**MACW06R**  
a Red  
7.2 oz.  
98% Cotton/  
2% Spandex  
Twill  
Sizes | 012R



**MACW08T**  
a Sand  
7.2 oz.  
98% Cotton/  
2% Spandex  
Twill  
Sizes | 012R



**MACW17X**  
a Black  
7.2 oz.  
98% Cotton/  
2% Spandex  
Twill  
Sizes | 012R

012R											
	S	M	L	XL	XXL	MT	LT	XLT	2XT	3XT	4X
REG	•	•	•	•	•						
TALL						•	•	•	•	•	
BIG										•	•

SPORT WESTERN | CLASSIC FIT



75222BL

- Spread Collar
- Western Yokes
- Three Snap Cuffs
- Snaps
- Tone on Tone Dobby Stripe
- 1/12 Solid, Hanging
- Imported

SPORT WESTERN SOLIDS | CLASSIC FIT



71105WH

- Long Sleeves
- Spread Collar
- Authentic Western Yokes
- Two Snap Flap Pockets
- Pencil Slot at Left Pocket Flap
- Authentic Western Three Snap Cuffs with Sleeve Placket
- 1/12 Solid, Hanging
- Imported



**75221WH** | White  
 80% Polyester/  
 20% Cotton  
 Sizes | 008S



**75744TQ** | Turquoise  
 84% Polyester/  
 16% Cotton  
 Sizes | 009D



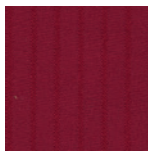
**75222BL** | Blue  
 80% Polyester/  
 20% Cotton  
 Sizes | 008S



**75746RD** | Red  
 84% Polyester/  
 16% Cotton  
 Sizes | 009D



**75226TN** | Ecrú  
 80% Polyester/  
 20% Cotton  
 Sizes | 008S



**75740WN** | Wine  
 80% Polyester/  
 20% Cotton  
 Sizes | 008S



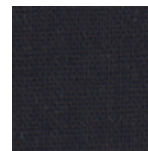
**75214BK** | Black  
 80% Polyester/  
 20% Cotton  
 Sizes | 008C



**75742TN** | Tan  
 80% Polyester/  
 20% Cotton  
 Sizes | 008S



**71105WH** | White  
 55% Cotton/45% Polyester  
 Solid Broadcloth  
 Sizes | 010Z



**71105BK** | Black  
 55% Cotton/45% Polyester  
 Solid Broadcloth  
 Sizes | 010Z

008S							
REG	S	M	L	XL	XXL	LT	XLT 2XLT
TALL	•	•	•	•	•	•	•

010Z								
REG	S	M	L	XL	XXL	LT	XLT	2XLT 3X 4X
TALL	•	•	•	•	•	•	•	•
BIG								•

008C							
REG	S	M	L	XL	XXL	LT	XLT 2XLT
TALL	•	•	•	•	•	•	•

009D								
REG	S	M	L	XL	XXL	MT	LT	XLT 2XLT
TALL	•	•	•	•	•	•	•	•

STRIPED WESTERN SNAPS | CLASSIC FIT

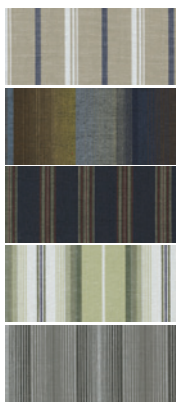


71130CS



Spread Collar  
Authentic Western Yokes  
Two Snap Flap Pockets  
Authentic Western Three Snap Cuffs  
Bias Pattern Formation on Yokes and Pockets  
55% Cotton/45% Polyester Lightweight Plaids or Stripes  
1/12 Rotating Assorted, Hanging, Neck & Sleeve Sizes  
Imported

- 71130CS** | Long Sleeves  
**a** | Sizes | 037A
- 73130HA** | Short Sleeves  
**a** | Sizes | 010C
- 75201AA** | Long Sleeves  
**a** | Regular Sizes | 005R
- 75951PP** | Long Sleeves  
**a** | Big & Tall Sizes | 008D
- 76201AA** | Short Sleeves  
**a** | Regular Sizes | 005R
- 76951PP** | Short Sleeves  
**a** | Big & Tall Sizes | 008D



(Representation of stripes)

PLAID WESTERN SNAPS | CLASSIC FIT



75204PP

Spread Collar  
Authentic Western Yokes  
Two Snap Flap Pockets  
Authentic Western Three Snap Cuffs  
Bias Pattern Formation on Body  
55% Cotton/45% Polyester Lightweight Plaids or Stripes  
1/12 Rotating Assorted Hanging,  
Alpha Sizes  
Imported

- 71125CP** | Long Sleeves  
**a** | Sizes | 037A
- 73125HA** | Short Sleeves  
**a** | Sizes | 010C
- 75204PP** | Long Sleeves  
**a** | Regular Sizes | 005R
- 75932PP** | Long Sleeves  
**a** | Big & Tall Sizes | 009A
- 76204PP** | Short Sleeves  
**a** | Regular Sizes | 005R
- 76932PP** | Short Sleeves  
**a** | Big & Tall Sizes | 009A



(Representation of plaids)

009A						
LT	XLT	2XLT	3XLT	4XLT	1X	2X
•	•	•	•	•	•	•

008D					
LT	XLT	2XLT	3XLT	1X	2X
•	•	•	•	•	•

010C							
REG	14 1/2	15	15 1/2	16	16 1/2	17	17 1/2
•	•	•	•	•	•	•	•
TALL	•	•	•	•	•	•	•

005R				
S	M	L	XL	XXL
•	•	•	•	•

037A										
REG	14 1/2	15	15 1/2	16	16 1/2	17	17 1/2	18	19	20
•	•	•	•	•	•	•	•	•	•	•
•	•	•	•	•	•	•	•	•	•	•
•	•	•	•	•	•	•	•	•	•	•
•	•	•	•	•	•	•	•	•	•	•
•	•	•	•	•	•	•	•	•	•	•
•	•	•	•	•	•	•	•	•	•	•
•	•	•	•	•	•	•	•	•	•	•
•	•	•	•	•	•	•	•	•	•	•
•	•	•	•	•	•	•	•	•	•	•


GEORGE STRAIT SOLIDS | RELAXED FIT

- Long Sleeves
- Buttndown Collar
- Straight Back Yoke
- One Button Through Pocket with Logo Embroidery
- Two Button Adjustable Cuffs
- Imported
- 1/12 Solid, Hanging



MGS273B




**MGS268W**  
 a  
  
 White  
 85% Cotton/  
 15% Polyester  
 Poplin Solid  
 Sizes | 012Z


**MGS269X**  
 a  
 Black  
 85% Cotton/  
 15% Polyester  
 Poplin Solid  
 Sizes | 012Z

**MGS270H**  
 a  
 Grey  
 85% Cotton/  
 15% Polyester  
 Poplin Solid  
 Sizes | 009D

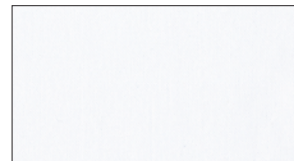
**MGS271K**  
 a  
 Pink  
 85% Cotton/  
 15% Polyester  
 Poplin Solid  
 Sizes | 009D

**MGS272G**  
 a  
 Turquoise  
 85% Cotton/  
 15% Polyester  
 Poplin Solid  
 Sizes | 012Z

**MGS273B**  
 a  
  
 Royal Blue  
 85% Cotton/  
 15% Polyester  
 Poplin Solid  
 Sizes | 009D

**MGS274R**  
 a  
  
 Red  
 85% Cotton/  
 15% Polyester  
 Poplin Solid  
 Sizes | 009D

100% COTTON



**MGS242W**  
 a  
 White  
 100% Cotton  
 Yarn Dyed Twill  
 Luster Finish  
 Sizes | 012R

012Z												
REG	S	M	L	XL	XXL	MT	LT	XLT	2XT	3XT	2X	3X
TALL	•	•	•	•	•	•	•	•	•	•	•	•
BIG											•	•

012R												
REG	S	M	L	XL	XXL	MT	LT	XLT	2XT	3XT	3X	4X
TALL	•	•	•	•	•	•	•	•	•	•	•	•
BIG											•	•

009D										
REG	S	M	L	XL	XXL	MT	LT	XLT	2XLT	2XL
TALL	•	•	•	•	•	•	•	•	•	•



**MP1316M** | Blue Chambray  
 Long Sleeve, Spread Collar, Western Pockets and Yokes, Two Snap Flap Pockets with 1" Pencil Slot on Left Pocket, Wrangler® Over Left Pocket, Down Left Sleeve and Back Yoke, Three Snap Cuffs, 1/4" Turned Hemtails, Snaps  
 Imported | 100% Cotton Chambray  
 Sizes | 008S



**MP2338X** | Black  
 Long Sleeve, Buttondown Collar, Western Pockets and Back Yoke, Two Button Through Pockets with 1" Pencil Slot on Left Pocket, Wrangler® Over Right Pocket, Down Left Sleeve, Back Yoke and Collar, Two Button Adjustable Cuffs with Full Sleeve Placket, Buttons  
 Imported | 100% Cotton Twill  
 Sizes | 008S



**MP2327N** | Navy  
 Long Sleeve, Buttondown Collar, Western Pockets and Back Yoke, Two Button Flap Pockets with 1" Pencil Slot on Left Pocket, Wrangler® Over Left Pocket, Down Left Sleeve, Back Yoke and Collar, Two Button Adjustable Cuffs, Buttons  
 Imported | 100% Cotton Twill  
 Sizes | 010W

008S						
REG	S	M	L	XL	XXL	LT
TALL						

010W							
REG	S	M	L	XL	XXL	LT	XLT
TALL							
BIG							

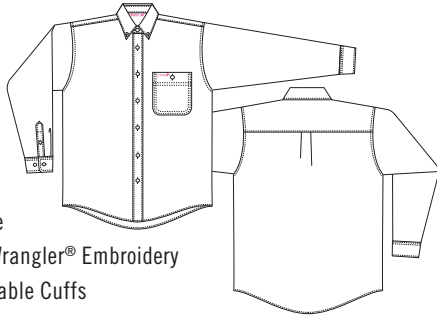
1/12 Solid, Hanging

TOUGH ENOUGH TO WEAR PINK | RELAXED FIT



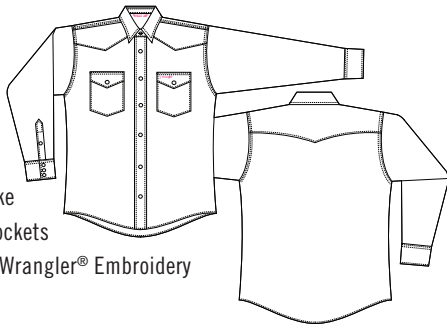
**BUTTONS | Style A**

- Buttdown Collar
- Straight Back Yoke
- Pink Ribbon and Wrangler® Embroidery
- Two Button Adjustable Cuffs
- Imported
- 1/12 Solid, Hanging

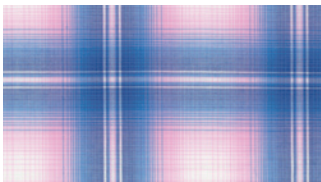


**SNAPS | Style B**

- Spread Collar
- Western Back Yoke
- Two Snap Flap Pockets
- Pink Ribbon and Wrangler® Embroidery
- Three Snap Cuffs
- Snaps
- Imported
- 1/12 Solid, Hanging



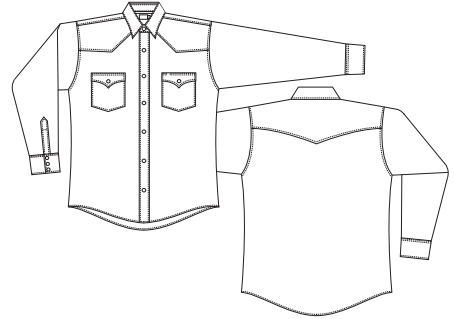
**MTP242K**  
**Style A**  
a | Pink  
100% Cotton Twill  
Sizes | 012B



**MTP259M**  
**Style B**  
a | Pink/Blue  
100% Cotton Plaid  
Sizes | 011G

011G										
	S	M	L	XL	XXL	LT	XLT	2XLT	3XLT	2X 3X
REG	•	•	•	•	•					
TALL						•	•	•	•	
BIG										•

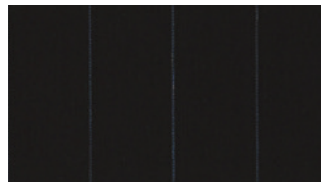
SILVER EDITION | CLASSIC FIT



- Spread Collar
- Western Yokes with Embroidery
- Three Snap Cuffs
- Snaps
- 1/12 Solid, Hanging
- Imported



**75045WH**  
a | White  
59% Cotton/  
40% Polyester/  
1% Metallic Fiber  
Dobby Stripe  
Sizes | 005S

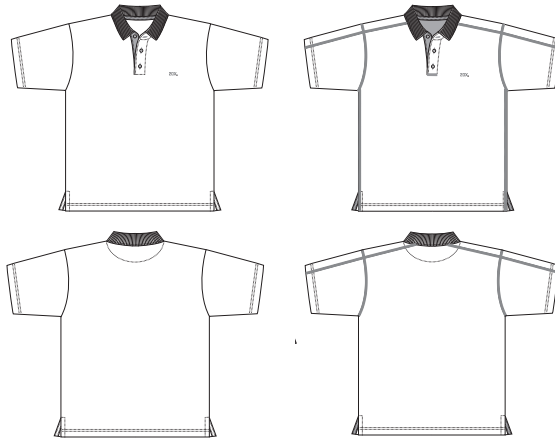


**75046BK**  
a | Black  
59% Cotton/  
40% Polyester/  
1% Metallic Fiber  
Dobby Stripe  
Sizes | 005S

012B										
	XS	S	M	L	XL	XXL	LT	XLT	2XLT	3XLT 2X 3X
REG	•	•	•	•	•					
TALL							•	•	•	•
BIG										•



20X ADVANCED COMFORT PERFORMANCE POLOS | RELAXED FIT



STYLE A

STYLE B  
Shoulder Seam and Side Gusset

Short Sleeve Polo  
Rib Knit No-Roll Collar  
Three Button Placket with Contrast Trim on Inner  
Placket and Neck Tape

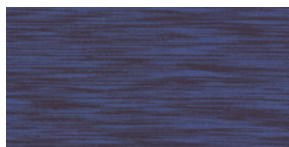


Moves With You  
Wicking

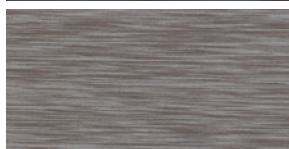
Two Needle Hem Sleeves and Two Needle Straight Hem  
Imported  
1/12 Solid, Hanging



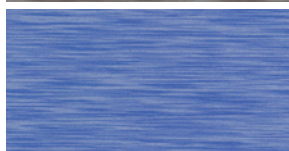
**MACP01X**  
**Style A**  
Black  
97% Polyester/  
3% Spandex  
Sizes | 005S



**MACP06N**  
**Style B**  
Navy/Black  
92% Polyester/  
8% Spandex Moire  
Sizes | 005S



**MACP07H**  
**Style B**  
Charcoal/Grey  
92% Polyester/  
8% Spandex Moire  
Sizes | 005S



**MACP08B**  
**Style B**  
Royal Blue/Grey  
92% Polyester/  
8% Spandex Moire  
Sizes | 005S

005S  
S M L XL XXL

RETRO® PREMIUM | MODERN FIT

Long Sleeve  
 Spread Collar  
 Wrangler® Riser Label at Bottom of Center Front Placket  
 Two Snap Flap Pockets  
 Snaps  
 1/12 Solid, Hanging Imported



009M							
	S	M	L	XL	XXL	LT	XLT 2XLT3XLT
REG	•	•	•	•	•	•	•
TALL						•	•

**MVR531W** White  
 a Vintage Yokes, Single Needle Topstitching, Two Asymmetrical Vintage Two Snap Pockets, Contrast Trim, Two Snap Cuffs, 1/4" Turned Hemtails | 100% Cotton Dobby | Sizes | 009M

**MVR532X** Black  
 a Vintage Yokes, Single Needle Topstitching, Two Asymmetrical Vintage Two Snap Pockets, Contrast Trim, Two Snap Cuffs, 1/4" Turned Hemtails | 100% Cotton Dobby | Sizes | 009M



**MVR458D** Blue Denim  
 a Western Yokes, Contrast Trim on Inner Cuffs, Two Snap Cuffs, Double Needle Topstitching, Two Snap Flap Pockets with "W" Stitching, 1/4" Turned Hemtails | 100% Cotton Denim | Sizes | 009M

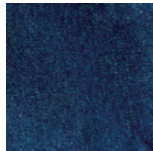
**MVR502T** Tan  
 a Western Yokes, Contrast Trim on Inner Cuffs, Two Snap Cuffs, Double Needle Topstitching, Two Snap Flap Pockets with "W" Stitching, 1/4" Turned Hemtails | 100% Cotton Pigment Dyed Twill | Sizes | 009M

**MVR507J** Blue  
 a Western Yokes, Contrast Trim on Inner Cuffs, Two Snap Cuffs, Double Needle Topstitching, Two Snap Flap Pockets with "W" Stitching, 1/4" Turned Hemtails | 100% Cotton Pigment Dyed Twill | Sizes | 009M

DENIM JACKET | UNLINED



Traditional Western Styling  
Front Pockets with "W" Stitching  
Slash Front Pocket



74145PW



Prewashed  
100% Cotton, Heavyweight  
Broken Twill  
Imported  
Sizes | 009W

009W

	S	M	L	XL	XXL	MT	LT	XLT	2XT
BIG	•	•	•	•	•	•	•	•	•
TALL						•	•	•	•

# Wrangler®

WESTERN WOMEN'S

MAE | BOOT CUT



**09MWZHT** MID-RISE  
 a 11.3 oz.  
 61% Cotton/23% Rayon/  
 15% Polyester/1% Spandex  
 Imported  
 Sizes | G31H



**09MWZJD** MID-RISE  
 a 11.3 oz.  
 61% Cotton/23% Rayon/  
 15% Polyester/1% Spandex  
 Imported  
 Sizes | G31H



**09MWZMS** MID-RISE  
**09PWZMS** Dark Blue  
 PLUS STYLES  
 a 11 oz.  
 76% Cotton/23% Polyester/  
 1% Spandex  
 Imported  
 Sizes | G31H  
 PLUS Sizes | GA15



**09MWZKM** MID-RISE  
**09PWZKM** Medium Blue  
 PLUS STYLES  
 a 9.5 oz.  
 91% Cotton/7% Polyester/  
 2% Spandex  
 Imported  
 Sizes | G31H  
 PLUS Sizes | GA15



**09MWZDW** MID-RISE  
 a 11 oz.  
 64% Cotton/19% Rayon/  
 16% Polyester/1% Spandex  
 Imported  
 Sizes | G37F

		G37F										
		0	1	3	5	7	9	11	13	15	17	19
Inseam	30	.	.	.	.	.	.	.	.	.	.	.
	32	.	.	.	.	.	.	.	.	.	.	.
	34	.	.	.	.	.	.	.	.	.	.	.
	36	.	.	.	.	.	.	.	.	.	.	.

		GA15				
		18W	20W	22W	24W	26W
Inseam	30	.	.	.	.	.
	32	.	.	.	.	.
	34	.	.	.	.	.
	36	.	.	.	.	.

		G31H											
		00	0	1	3	5	7	9	11	13	15	17	19
Inseam	30	.	.	.	.	.	.	.	.	.	.	.	.
	32	.	.	.	.	.	.	.	.	.	.	.	.
	34	.	.	.	.	.	.	.	.	.	.	.	.
	36	.	.	.	.	.	.	.	.	.	.	.	.

MAE | TROUSER



09MWWAB  
a

MID-RISE  
TROUSER  
9.8 oz.  
99% Cotton/1% Spandex  
Imported  
Sizes | G31H

SADIE | BOOT CUT



07MWZDW  
a

LOW-RISE  
BOOT CUT  
11 oz. Denim  
64% Cotton/19% Rayon/  
16% Polyester/1% Spandex  
Imported  
Sizes | G31H



07MWZGS  
a

LOW-RISE  
BOOT CUT  
10.75 oz. Denim  
94% Cotton/  
5% Polyester/  
1% Lycra Spandex  
Imported  
Sizes | G31H

		G 31 H											
		00	0	1	3	5	7	9	11	13	15	17	19
Inseam	30												
	32												
	34												
	36												
	36												

WILLOW

Wrangler

THE ULTIMATE RIDING JEAN



WILLOW | RIDING BOOT CUT | PERFORMANCE WAIST



**WRW60DS**  
**Ⓐ** MID-RISE  
 RIDING BOOT CUT  
 Davis  
 11 oz. Denim  
 76% Cotton/23% Polyester/  
 1% Spandex  
 Imported  
 Sizes | G36F



**WRW60LE**  
**Ⓐ** MID-RISE  
 RIDING BOOT CUT  
 Lovette  
**STARTS 7/1/20**  
 11 oz. Denim  
 76% Cotton/23% Polyester/  
 1% Spandex  
 Imported  
 Sizes | G36F



**WRW60RA**  
**Ⓐ** MID-RISE  
 RIDING BOOT CUT  
 Rebecca  
**STARTS 3/1/20**  
 11 oz.  
 76% Cotton/23% Polyester/  
 1% Spandex  
 Imported  
 Sizes | G36F

		G36F											
		00	0	1	3	5	7	9	11	13	15	17	19
Inseam	32	•	•	•	•	•	•	•	•	•	•	•	•
	34	•	•	•	•	•	•	•	•	•	•	•	•
	36	•	•	•	•	•	•	•	•	•	•	•	•
	38	•	•	•	•	•	•	•	•	•	•	•	•

Q-BABY | BOOT CUT



**WRQ20ST**  
a MID-RISE | BOOT CUT  
Boot Scootin  
11.75 oz.  
76% Cotton/23% Polyester/  
1% Spandex  
Imported  
Sizes | G38A



**WRQ20WS**  
a **STARTS 3/1/20** MID-RISE | BOOT CUT  
**DYEABLE WHITE**  
10.5 oz.  
98% Cotton/2% Spandex  
Imported  
Sizes | G30G



**WRQ20NR**  
**WPQ20NR**  
PLUS STYLES  
a MID-RISE | BOOT CUT  
11.3 oz.  
61% Cotton/23% Rayon/  
15% Polyester/  
1% Spandex  
Imported  
Sizes | G38A  
PLUS Sizes | GA15



**WRQ20WI**  
a MID-RISE | BOOT CUT  
Wild Streak  
11 oz.  
76% Cotton/23% Polyester/  
1% Spandex  
Imported  
Sizes | G38A



**WRQ20BL**  
a MID-RISE | BOOT CUT  
10 oz.  
99% Cotton/  
1% Spandex  
Imported  
Sizes | G46C



**WRQ20DD**  
a MID-RISE | BOOT CUT  
11.5 oz.  
86% Cotton/13% Polyester/  
1% Spandex  
Imported  
Sizes | G38A



**WRQ20TB**  
a MID-RISE | BOOT CUT  
12 oz.  
99% Cotton/  
1% Spandex  
Imported  
Sizes | G46C

G30G	
Inseam	0 1 3 5 7 9 11 13 15 17 19
32	. . . . .
34	. . . . .
36	. . . . .
38	. . . . .

GA15	
Inseam	18W 20W 22W 24W 26W
30	. . . . .
32	. . . . .
34	. . . . .

G46C	
Inseam	0 1 3 5 7 9 11 13 15 17 19 20W 22W 24W 26W
30	. . . . .
32	. . . . .
34	. . . . .
36	. . . . .
38	. . . . .



SHILOH  
CASH

Wrangler

THE ULTIMATE  
RIDING JEAN



SHILOH | BOOT CUT



**WRS40TA** | LOW-RISE | BOOT CUT  
 (a) 79% Cotton/20% Polyester/  
 1% Spandex  
 Imported  
 11.75 oz. Denim  
 Sizes | G38A

CASH | BOOT CUT



**WRC10AS** | MID-RISE | BOOT CUT  
 (a) No Gap Waistband  
 13 oz.  
 100% Cotton  
 Imported  
 Sizes | G30H



**WRC100N** | MID-RISE | BOOT CUT  
 (a) No Gap Waistband  
**ENDS 6/15/20**  
 13 oz.  
 100% Cotton  
 Imported  
 Sizes | G30H

		G 38A											
		WAIST	0	1	3	5	7	9	11	13	15	17	19
Inseam	30												
	32												
	34												
	36												
	38												

		G 30H											
			0	1	3	5	7	9	11	13	15	17	19
Inseam	30												
	32												
	34												
	36												

AURA | BOOT CUT



**WUT74BL** MID-RISE  
**WUP74BL** Instantly Slimming™  
11.25 oz.  
64% Cotton/ 19% Rayon/  
16% Polyester  
Imported  
Sizes | G25Y  
PLUS Sizes | GB10

**PLUS STYLES**  
a



**WUT74BT** MID-RISE  
a Instantly Slimming™  
10.5 oz.  
98% Cotton/2% Spandex  
Imported  
Sizes | G29J



**WUT74AG** MID-RISE  
**WUP74AG** Instantly Slimming™  
9.8 oz.  
99% Cotton/  
1% Spandex  
Imported  
Sizes | G23K  
PLUS Sizes | GB10

**PLUS STYLES**  
a



**WUT74TM** MID-RISE  
a Instantly Slimming™  
12.5 oz  
99% Cotton/1% Spandex  
Imported  
Sizes | G27W

**ENDS 7/1/20**



**WUB420S** MID-RISE  
a Instantly Slimming™  
with Booty Up® Technology  
10.5 oz.  
77% Cotton/22%Rayon/  
1% Spandex | Imported  
Sizes | G27W

**ENDS 7/1/20**

		G25Y										
		2	4	6	8	10	12	14	16	18		
Inseam	SHT	•	•	•	•	•	•	•	•	•	•	•
	AVG	•	•	•	•	•	•	•	•	•	•	•
	TAL	•	•	•	•	•	•	•	•	•	•	•

		G29J										
		2	4	6	8	10	12	14	16	18	20	22
Inseam	SHT	•	•	•	•	•	•	•	•	•	•	•
	AVG	•	•	•	•	•	•	•	•	•	•	•
	TAL	•	•	•	•	•	•	•	•	•	•	•

		GB10				
		18W	20W	22W	24W	26W
Inseam	SHT	•	•	•	•	•
	AVG	•	•	•	•	•
	TAL	•	•	•	•	•

		G23K										
		2	4	6	8	10	12	14	16	18		
Inseam	SHT	•	•	•	•	•	•	•	•	•	•	•
	AVG	•	•	•	•	•	•	•	•	•	•	•
	TAL	•	•	•	•	•	•	•	•	•	•	•

		G27W										
		2	4	6	8	10	12	14	16	18	20	22
Inseam	SHT	•	•	•	•	•	•	•	•	•	•	•
	AVG	•	•	•	•	•	•	•	•	•	•	•
	TAL	•	•	•	•	•	•	•	•	•	•	•

ESSENTIAL STRAIGHT LEG



**09MWTMS** MID-RISE | STRAIGHT LEG  
**09PWTMS** 11.25 oz.  
 64% Cotton/19% Rayon 16% Polyester/1% Spandex  
 Imported  
 Sizes | G37F  
 PLUS Sizes | GA15

PLUS STYLES  
 a



**09MWTDS** MID-RISE | STRAIGHT LEG  
**09PWTDS** 11.25 oz.  
 64% Cotton/19% Rayon 16% Polyester/1% Spandex  
 Imported  
 Sizes | G37F  
 PLUS Sizes | GA15

PLUS STYLES  
 a

ESSENTIAL BOOT CUT



**09MWZDO** MID-RISE | BOOT CUT  
**09PWZDO** 11.25 oz.  
 64% Cotton/19% Rayon/16% Polyester/1% Spandex  
 Imported  
 Sizes | G37F  
 PLUS Sizes | GA15

PLUS STYLES  
 a



**09MWZAH** MID-RISE | BOOT CUT  
**09MWP AH** 11 oz.  
 64% Cotton/19% Rayon/16% Polyester/1% Spandex  
 Imported  
 Sizes | G37F  
 PLUS Sizes | GA15

PLUS STYLES  
 a



**09MWZMB** MID-RISE | BOOT CUT  
 11.25 oz.  
 64% Cotton/19% Rayon/16% Polyester/1% Spandex  
 Imported  
 Sizes | G37F

a



**09MWZBK** MID-RISE | BOOT CUT  
 Black  
 10 oz.  
 99% Cotton/1% Spandex  
 Imported  
 Sizes | G37F

a

		G37F										
		0	1	3	5	7	9	11	13	15	17	19
Inseam	30											
	32	•	•	•	•	•	•	•	•	•	•	•
	34	•	•	•	•	•	•	•	•	•	•	•
	36	•	•	•	•	•	•	•	•	•	•	•

		GA15				
		18W	20W	22W	24W	26W
Inseam	30					
	32	•	•	•	•	•
	34	•	•	•	•	•
	36	•	•	•	•	•

COWGIRL CUT | SLIM FIT



**014MWZG**  
 NATURAL WAIST  
 14.75 oz.  
 100% Cotton  
 Heavyweight Broken Twill  
 Imported  
 Sizes | G39A

WRANGLER BLUES | BOOT CUT



**WB101AD**  
 MID-RISE | BOOT CUT  
 14.5 oz.  
 100% Cotton  
 Heavyweight Denim  
 Imported  
 Sizes | G34A

COWGIRL CUT | SLIM FIT | STRETCH



**18MWZSW**  
 HIGH WAIST  
 12.5 oz.  
 98% Cotton/  
 2% Spandex  
 Imported  
 12.5 oz. Denim  
 Sizes | G29D

ARAW | BOOT CUT | CLASSIC FIT



**WCW84CW**  
 MID-RISE | CLASSIC FIT  
 BOOT CUT  
 11.75 oz.  
 99% Cotton/  
 1% Spandex  
 Imported  
 Sizes | G24M

G39A		00	0	1	3	5	7	9	11	13	15
Inseam	30	.	.	.	.	.	.	.	.	.	.
	32	.	.	.	.	.	.	.	.	.	.
	34	.	.	.	.	.	.	.	.	.	.
	36	.	.	.	.	.	.	.	.	.	.
	38	.	.	.	.	.	.	.	.	.	.

G29D		0	1	3	5	7	9	11	13	15
Inseam	30	.	.	.	.	.	.	.	.	.
	32	.	.	.	.	.	.	.	.	.
	34	.	.	.	.	.	.	.	.	.
	36	.	.	.	.	.	.	.	.	.

G34A		WAIST	2	4	6	8	10	12	14	16	18	20	22	24	26	28	30
Inseam	30	.	.	.	.	.	.	.	.	.	.	.	.	.	.	.	.
	32	.	.	.	.	.	.	.	.	.	.	.	.	.	.	.	.
	34	.	.	.	.	.	.	.	.	.	.	.	.	.	.	.	.

G24M		2	4	6	8	10	12	14	16	18
Inseam	30	.	.	.	.	.	.	.	.	.
	32	.	.	.	.	.	.	.	.	.
	34	.	.	.	.	.	.	.	.	.



Ⓐ LW3961D



Ⓐ LW1031T

- Ⓐ **LW3961D** | Grey Denim  
Western Snap Shirt  
100% Cotton  
1/12 Solid, Hanging | Imported  
Sizes | 106A
- Ⓐ **LW1031T** | Rawhide  
Western Snap Shirt  
98% Cotton/2% Spandex  
1/12 Solid, Hanging | Imported  
Sizes | 106A
- Ⓐ **LW3039D** | Denim  
Western Snap Shirt  
100% Cotton  
1/12 Solid, Hanging | Imported  
Sizes | 106A
- Ⓐ **LW1041B** | Chambray  
Western Snap Shirt  
98% Cotton/2% Spandex  
1/12 Solid, Hanging | Imported  
Sizes | 106A



Ⓐ LW3039D



Ⓐ LW1041B

106A					
XS	S	M	L	XL	XXL
REG	•	•	•	•	•



Ⓐ LW7006D  
STARTS 6/1/20



Ⓐ LW7007D  
STARTS 6/1/20



Ⓐ LWD708D  
STARTS 6/1/20



Ⓐ LWD709D  
STARTS 6/1/20



Ⓐ LWJ701D  
STARTS 6/1/20

LAST CHANCE  
ENDS 6/15/20

Wrangler

W



Ⓐ LW3771D  
ENDS 6/15/20



Ⓐ LWJ370D  
ENDS 6/15/20



Ⓐ LW3791D  
ENDS 6/15/20



Ⓐ LWD371D  
ENDS 6/15/20



Ⓐ LWD381D  
ENDS 6/15/20

106A  
XS S M L XL XXL  
REG . . . . .

007N  
XS S M L XL XXL 3XL  
. . . . .

- Ⓐ LW7006D | Mid Denim  
Long Sleeve Western Snap Denim Shirt  
100% Cotton | 1/12 Solid, Hanging  
Imported | Sizes | 007N  
**STARTS 6/1/20**
- Ⓐ LW7007D | Dark Denim  
Long Sleeve Western Snap Denim Shirt  
100% Cotton | 1/12 Solid, Hanging  
Imported | Sizes | 007N  
**STARTS 6/1/20**
- Ⓐ LWJ701D | Dark Denim  
Denim Jacket, Classic Fit, Buttons  
1/12 Solid, Hanging | Imported  
Sizes | 106A  
**STARTS 6/1/20**
- Ⓐ LWD708D | Mid Denim  
Long Sleeve Western Denim Shirt Dress  
with Self Tie Belt  
100% Cotton | 1/12 Solid, Hanging  
Imported | Sizes | 106A  
**STARTS 6/1/20**
- Ⓐ LWD709D | Dark Denim  
Long Sleeve Western Shirt Dress  
with Self Tie Belt  
100% Cotton | 1/12 Solid, Hanging  
Imported | Sizes | 106A  
**STARTS 6/1/20**
- Ⓐ LW3771DX | Medium Denim  
Western Snap Shirt  
76% Cotton/24% Polyester  
Imported | 1/12 Solid, Hanging  
Sizes | 007N  
**ENDS 6/15/20**
- Ⓐ LW3791D | Darkest Denim  
Western Snap Shirt  
76% Cotton/24% Polyester  
Imported | 1/12 Solid, Hanging  
Sizes | 007N  
**ENDS 6/15/20**
- Ⓐ LWD381D | Light Denim  
Long Sleeve Denim Western Shirt Dress  
76% Cotton/24% Polyester  
Imported | 1/12 Solid, Hanging  
Sizes | 106A  
**ENDS 6/15/20**
- Ⓐ LWD371D | Darkest Denim  
Long Sleeve Denim Western Shirt Dress  
76% Cotton/24% Polyester  
Imported | 1/12 Solid, Hanging  
Sizes | 106A  
**ENDS 6/15/20**
- Ⓐ LWJ370D | Dark Denim  
Denim Jacket, Buttons  
81% Cotton/18% Polyester/1% Spandex  
Imported | 1/12 Solid, Hanging  
Sizes | 106A  
**ENDS 6/15/20**

Ⓐ **LWK004W** | Bright White  
Slim Fit, Short Sleeve T-Shirt with Center Front Screenprint  
100% Cotton  
1/12 Solid, Hanging | Imported  
Sizes | 005Z  
**STARTS 6/1/20**

Ⓐ **LWK005H** | Heather Grey  
Slim Fit, Short Sleeve T-Shirt with Center Front Screenprint  
100% Cotton  
1/12 Solid, Hanging | Imported  
Sizes | 005Z  
**STARTS 6/1/20**

Ⓐ **LWEK61B** | Pool Blue  
Three Quarter Sleeve, Smock Shoulder Knit Top  
95% Viscose/5% Spandex  
1/12 Solid, Hanging | Imported  
Sizes | 106B  
**STARTS 3/1/20**

Ⓐ **LWEK62X** | Black  
Three Quarter Sleeve, Smock Shoulder Knit Top  
95% Viscose/5% Spandex  
1/12 Solid, Hanging | Imported  
Sizes | 106B  
**STARTS 3/1/20**

Ⓐ **LWEK63W** | White  
Three Quarter Sleeve, Smock Shoulder Knit Top  
95% Viscose/5% Spandex  
1/12 Solid, Hanging | Imported  
Sizes | 106B  
**STARTS 3/1/20**



Ⓐ **LWK004W**  
**STARTS 6/1/20**



Ⓐ **LWK005H**  
**STARTS 6/1/20**



Ⓐ **LWEK61B**  
**STARTS 3/1/20**



Ⓐ **LWEK62X**  
**STARTS 3/1/20**



Ⓐ **LWEK63W**  
**STARTS 3/1/20**

005Z				
S	M	L	XL	XXL
.	.	.	.	.

106B					
S	M	L	XL	XXL	XXXL
.	.	.	.	.	.





Ⓐ LW1011B

Western Snap Shirt  
97% Cotton/3% Spandex  
1/12 Solid Hanging  
Imported



Ⓐ LW011FA

Western Snap Shirt  
100% Cotton Flannel  
1/12 Rotating, Assorted | Imported  
Sizes | 007N

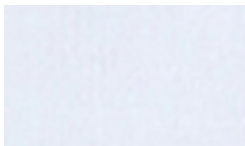


Ⓐ LW001RA

Western Snap Shirt  
100% Cotton Flannel  
1/12 Rotating, Assorted | Imported  
Sizes | 007N



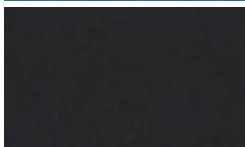
Ⓐ LW1003K | Pink  
Sizes | 007N



Ⓐ LW1001W | White  
Sizes | 007N



Ⓐ LW1011B | Royal  
Sizes | 007N



Ⓐ LW1002X | Black  
Sizes | 007N

REPRESENTATION OF PLAIDS



REPRESENTATION OF PLAIDS



007N						
XS	S	M	L	XL	XXL	3XL
•	•	•	•	•	•	•

W



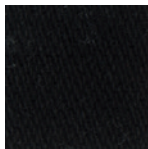
# Wrangler<sup>®</sup>

YOUTH

BOYS' WRANGLER® ORIGINAL | PRORODEO

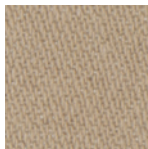


Adjust-to-Fit  
Authentic Five Pocket Styling  
100% Cotton, Imported



13MWBBK  
13MWJBK  
a

Sizes | M23A  
Sizes | S14A  
Overdyed Black  
13.75 oz. Denim



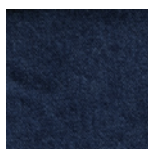
13MWBTN  
13MWJTN  
a

Sizes | M18E  
Sizes | S14A  
Prewashed Tan  
13.75 oz. Denim



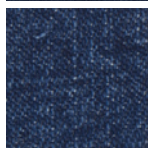
13MWBSW  
13MWJSW  
a

Sizes | M18E  
Sizes | S14A  
Subtle Worn  
12.75 oz. Denim



13MWZBP  
13MWZJP  
a

Sizes | M24B  
Sizes | S14A  
Prewashed Indigo  
14.75 oz. Denim



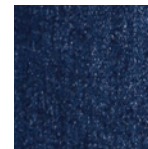
13MWBDI  
13MWJDI  
a

Sizes | M18E  
Sizes | S14A  
Dark Indigo  
13 oz. Denim

BOYS' WRANGLER® ORIGINAL | ACTIVE FLEX

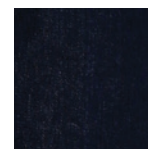


Adjust-to-Fit  
Authentic Five Pocket Styling  
Active Flex Denim  
Imported



13BAFGK  
13JAFGK  
a

Sizes | M24B  
Sizes | S14A  
Stonewash  
13 oz. Active Flex Denim  
Started: Spring 2020



13BAFPW  
13JAFPW  
a

Sizes | M24B  
Sizes | S14A  
Prewash  
13 oz. Active Flex Denim  
Started: Spring 2020

M23A							
	8	9	10	11	12	14	16 18 20
SLIM	•	•	•	•	•	•	•
REG	•	•	•	•	•	•	•
HUSKY	•	•	•	•	•	•	•

M24B							
	8	9	10	11	12	14	16 18 20
SLIM	•	•	•	•	•	•	•
REG	•	•	•	•	•	•	•
HUSKY	•	•	•	•	•	•	•

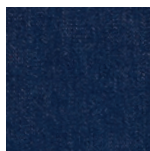
S14A						
	1T	2T	3T	4	5	6 7
SLIM	•	•	•	•	•	•
REG	•	•	•	•	•	•

M18E							
	8	9	10	11	12	14	16 18 20
SLIM	•	•	•	•	•	•	•
REG	•	•	•	•	•	•	•

BOYS' WRANGLER® ORIGINAL STUDENTS PRORODEO



Authentic Five Pocket Styling  
100% Cotton  
Heavyweight Broken Twill Denim  
Imported



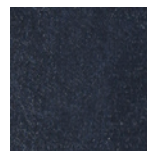
**13MWSP1** | Sizes | M18A  
Prewashed Indigo  
14.75 oz. Denim

BOYS' GEORGE STRAIT COWBOY CUT®



Wrangler  
GEORGE STRAIT  
COWBOY CUT® COLLECTION

Adjust-to-Fit  
Authentic Five Pocket Styling  
100% Cotton  
Imported



**13BGSHD** | Sizes | M21B  
**13JGSHD** | Sizes | S14A  
Heavy Denim Stone  
15.25 oz. Denim

M18A		25	26	27	28	29	30
Inseam	30						
	32						
	34						
	36						

M21B		8	9	10	11	12	14	16	18	20
	SLIM									
	REG									
	HUSKY									

S14A		1T	2T	3T	4	5	6	7
	SLIM							
	REG							

BOYS' RELAXED BOOT

Adjust-To-Fit  
Sits Lower on Waist  
Relaxed Seat and Thigh  
Fits Over Boots  
Bootcut  
Imported



**BRT20NS** | Sizes | M22C  
**JRT20NS** | Sizes | S14A  
**a** | Night Sky  
12.5 oz. Denim  
Started: Fall 2012



**BRT200W** | Sizes | M18E  
**JRT200W** | Sizes | S14A  
**a** | Ocean Water  
12.5 oz. Denim  
Started: Fall 2012



**BRT20FL** | Sizes | M20A  
**JRT20FL** | Sizes | S14A  
**a** | Falls City  
10.5 oz. Stretch Denim  
Started: Fall 2019

	M22C								
	8	9	10	11	12	14	16	18	20
SLIM	•	•	•	•	•	•	•	•	•
REG	•	•	•	•	•	•	•	•	•
HUSKY			•	•	•				

	M20A								
	8	9	10	11	12	14	16	18	20
SLIM	•	•	•	•	•	•	•	•	•
REG	•	•	•	•	•	•	•	•	•
HUSKY	•		•	•	•	•			

	M18E								
	8	9	10	11	12	14	16	18	20
SLIM	•	•	•	•	•	•	•	•	•
REG	•	•	•	•	•	•	•	•	•

Adjust-To-Fit  
Sits Lower on Waist  
Relaxed Seat and Thigh  
Fits Over Boots  
Straight Leg  
Imported

BOYS' | RELAXED STRAIGHT



**BRT30RR**  
**JRT30RR**  
ⓐ  
Sizes | M18E  
Sizes | S14A  
Rolling River  
12 oz. Denim  
Started: Spring 2013

Adjust-To-Fit  
Sits Lower on Waist  
Slim Seat and Thigh  
Fits Over Boots  
Straight Leg  
Imported

BOYS' | SLIM STRAIGHT



**88BWZJM**  
**88JWZJM**  
ⓐ  
Sizes | M18E  
Sizes | S14A  
Jerome  
11.25 oz. Stretch Denim  
Started: Fall 2018



**BRT30EB**  
**JRT30EB**  
ⓐ  
Sizes | M18E  
Sizes | S14A  
Everyday Blue  
13.25 oz. Denim  
Started: Spring 2011



**88BWZBZ**  
**88JWZBZ**  
ⓐ  
Sizes | M18E  
Sizes | S14A  
Bozeman  
12.5 oz. Stretch Denim  
Started: Fall 2017

	M18E									
	8	9	10	11	12	14	16	18	20	
SLIM	•	•	•	•	•	•	•	•	•	•
REG	•	•	•	•	•	•	•	•	•	•

	S14A						
	1T	2T	3T	4	5	6	7
SLIM	•	•	•	•	•	•	•
REG	•	•	•	•	•	•	•

Adjust-To-Fit  
Sits Lower on Waist  
Extra Relaxed Seat and Thigh  
Straight Leg  
Imported

BOYS' | 33 | EXTREME RELAXED



33BWXVM  
33JWXVM



Sizes | M18E  
Sizes | S14A  
Vintage Midnight  
12 oz. Denim  
Started: Holiday 2008

Adjust-To-Fit  
Sits Lower on Waist  
Slim Seat and Thigh  
Boot Cut  
Imported

BOYS' | 42 | VINTAGE BOOT



**42BWXGG** | Sizes | M18E  
**42JWXGG** | Sizes | S14A  
Glasgow  
10.5 oz. Stretch Denim  
Started: Fall 2018



**42BWXMD** | Sizes | M18E  
**42JWXMD** | Sizes | S14A  
Midland  
12 oz. Stretch Denim  
Started: Fall 2016



**42BWXBB** | Sizes | M18E  
**42JWXBB** | Sizes | S14A  
Breaking Barriers  
12.5 oz. Denim  
Started: Fall 2015



**42BWXCL** | Sizes | M18E  
**42JWXCL** | Sizes | S14A  
Canyon Lake  
12.25 oz. Denim  
Started: Fall 2016

		S14A						
		1T	2T	3T	4	5	6	7
SLIM	REG	•	•	•	•	•	•	•
REG	REG	•	•	•	•	•	•	•

		M18E									
		8	9	10	11	12	14	16	18	20	
SLIM	REG	•	•	•	•	•	•	•	•	•	
REG	REG	•	•	•	•	•	•	•	•	•	



BOYS' | CLASSIC SHIRTS

- Buttndown Collar
- Straight Back Yoke with Box Pleat
- One Button Through Pocket
- Two Button Adjustable Cuffs
- Buttons
- Imported



**BG274RD**  
 a Red  
 85% Cotton/15% Polyester  
 Poplin Solid  
 1/12 Solid, Hanging  
 Sizes | 107A  
 Men's Style | MGS274R



**BG268WH**  
 a White  
 85% Cotton/15% Polyester  
 Poplin Solid  
 1/12 Solid, Hanging  
 Sizes | 107A  
 Men's Style | MGS268W



**BG273BL**  
 a Royal Blue  
 85% Cotton/15% Polyester  
 Poplin Solid  
 1/12 Solid, Hanging  
 Sizes | 107A  
 Men's Style | MGS273B



**BG269BK**  
 a Black  
 85% Cotton/15% Polyester  
 Poplin Solid  
 1/12 Solid, Hanging  
 Sizes | 107A  
 Men's Style | MGS269X

107A						
XXS	XS	S	M	L	XL	XXL
4/5	6/7	8/10	12	14/16	18	20

Alpha Sizes

BOYS' | WESTERN WORKSHIRTS

- Spread Collar
- Authentic Western Yokes and Pockets
- Two Snap Flap Pockets with Pencil Slot
- Wrangler Riser Label on Left Pocket
- Decorative Stitching
- Two Snap Cuffs
- Snaps
- Imported
- 1/12 Solid, Hanging



**BS1039W** | Antique Blue  
100% Cotton  
Sizes | 107A  
Men's | MS1039W



**BW1251B** | Stonewashed Indigo  
6 oz.  
100% Cotton Denim  
Sizes | 007L



**BW1271B** | Navy Indigo  
100% Cotton Denim  
Sizes | 007L

**BW1321R** | Red  
100% Cotton Twill  
1/12 Solid, Hanging  
Sizes | 007L

DRESS WESTERN SOLID SHIRTS

- Long Sleeves
- Spread Collar
- Western Yokes
- Two Snap Flap Western Pockets
- 55% Cotton/45% Polyester
- Imported



**204WHSL** | White  
4 oz. Solid Broadcloth  
55% Cotton/45% Polyester  
1/12 Solid, Hanging  
Sizes | 007L

**007L**

XXS	XS	S	M	L	XL	XXL
0/2	3/4	5/6	7/8	10/12	14/16	18/20
•	•	•	•	•	•	•

**107A**

XXS	XS	S	M	L	XL	XXL
4/5	6/7	8/10	12	14/16	18	20
Alpha Sizes						

BOYS' | DRESS WESTERN PLAID SHIRTS



**201WAAL** | Long Sleeve  
**a** | 1/12 Assorted, Hanging  
Sizes | 007L



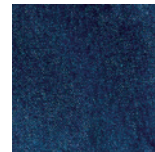
**206WAAL** | Short Sleeve  
**a** | 1/12 Assorted, Hanging  
Sizes | 107A

Spread Collar  
Western Yokes  
Two Snap Flap Western Pockets  
55% Cotton/45% Polyester  
Imported



(Representation of plaids)

BOYS' | UNLINED DENIM JACKET



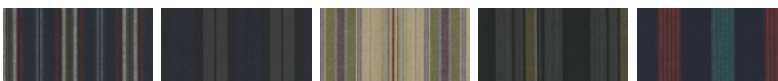
**84145PW** | Prewashed  
**a** | 100% Cotton Heavyweight  
Broken Twill  
Sizes | M06G

BOYS' | DRESS WESTERN STRIPE SHIRTS



**203WAAL** | Long Sleeve  
**a** | 1/12 Assorted, Hanging  
Sizes | 007L

Long Sleeves  
Spread Collar  
Western Yokes  
Two Snap Flap Western Pockets  
55% Cotton/45% Polyester  
Imported



(Representation of stripes)

**M06G**  
XS S M L XL XXL  
• • • • •

W

Wrangler

GIRLS'



GIRLS' | BOOT CUT JEANS



**09MWGHS**  
**a** | BOOT CUT  
 Denver  
 11 oz. Denim  
 4-6X Adjust-to-Fit Waist  
 64% Cotton/19% Rayon/  
 16% Polyester/1% Spandex  
 Imported  
 Sizes | G18W



**09MWGMS**  
**a** | BOOT CUT  
 4-6X Adjust-to-Fit Waist  
 11 oz. Denim  
 76% Cotton/23% Polyester/  
 1% Spandex  
 Imported  
 Sizes | G18W



**09MWGER**  
**a** | BOOT CUT  
 4-6X Adjust-to-Fit Waist  
 8.6 oz. Denim  
 79% Cotton/20% Polyester/  
 1% Spandex  
 Imported  
 Sizes | G18W



**09MWGES**  
**a** | BOOT CUT  
 Mid Blue  
 4-6X Adjust-to-Fit Waist  
 11 oz. Denim  
 64% Cotton/19% Rayon/  
 16% Polyester/1% Spandex  
 Imported  
 Sizes | G18W



**09MWGGB**  
**a** | BOOT CUT  
 Black  
 4-6X Adjust-to-Fit Waist  
 10 oz. Denim  
 99% Cotton/1% Spandex  
 Imported  
 Sizes | G18W



**09MWGNR**  
**a** | BOOT CUT  
**ENDS 6/15/20**  
 4-6X Adjust-to-Fit Waist  
 8.6 oz. Denim  
 79% Cotton/20% Polyester/  
 1% Spandex  
 Imported  
 Sizes | G18W

		G18W										
		4	5	6	6X	7	8	10	12	14		
Inseam	SLIM	•	•	•	•	•	•	•	•	•	•	•
	REG	•	•	•	•	•	•	•	•	•	•	•

**GW7001W** | White  
 Long Sleeve, Fancy Western Yokes with Rhinestones, Snaps | 100% Cotton  
 1/12 Solid, Hanging | Imported  
 Sizes | 0070

**GW1003K** | Pink  
 Long Sleeve Western Snap Shirt  
 97% Cotton/3% Spandex  
 1/12 Solid, Hanging | Imported  
 Sizes | 0070  
**STARTS 6/1/20**



**GW7001W**



**GW1003K**  
**STARTS 6/1/20**

0070						
XXS	XS	S	M	L	XL	XXL
(2/3)	(4/5)	(6/7)	(8/10)	(12/14)	16	18
•	•	•	•	•	•	•



**a** PQ4165D



**a** PQJ113D



**a** PQ1371D



**a** PQK126D



**a** 11MWIPW



**a** PQJ136D

**a** PQJ113D | Medium Blue  
 Girl's Jean, Spade Back Pockets with  
 "W" Embroidery and Patch, Skinny Leg  
 62% Cotton/37% Rayon/  
 1% Spandex, 9.6 oz Soft Knit-Like  
 Denim | 1/12 Solid, Hanging  
 Imported | Sizes | S09A

**a** PQK126D | Dark Blue  
 Western Denim Jacket  
 77% Cotton/21% Polyester/2% Spandex  
 Soft, Knit-Like Denim  
 1/12 Solid, Hanging | Imported  
 Sizes | S09A

**a** PQ1371D | Faded Blue  
 Western Bodyshirt  
 6 oz., 100% Cotton Denim  
 1/12 Solid, Hanging | Imported  
 Sizes | S06D

**a** PQ4165D | Denim  
 Western Bodyshirt | 100% Cotton  
 1/12 Solid, Hanging | Imported  
 Sizes | S06D

**a** PQJ136D | Dark Blue  
 Western Jean, Adjust-To-Fit Waist  
 9.6 oz. Soft Knit-Like Denim  
 62% Cotton/37% Rayon/1% Spandex,  
 1/12 Solid, Hanging | Imported  
 Sizes | S09A

**a** 11MWIPW  
**Wrangler® Infant Diaper Cover**  
 Lightweight Denim Washed Indigo, Full  
 Elastic Waist and Legs, Authentic Back  
 Pocket with "W" Stitching  
 100% Cotton | 1/12 Solid, Hanging  
 Imported | Sizes | S05C

S05C				
3M	6M	12M	18M	24M
infants	•	•	•	•

S06D					
0-3	3-6	6-9	12	18	24
Infants	•	•	•	•	•

S09A								
0-3	3-6	6-9	12	18	24	2T	3T	4T
Infants	•	•	•	•	•	•	•	•



## WRANGLER RIGGS WORKWEAR® BOTTOMS EXCLUSIVE FEATURES:

- room2move® Fit
  - Improved Fit in Seat, Thigh, Knee and Bottom Opening
  - Action Gusset
- Patented Tape Measure Reinforcement on Right Front Pocket
- #5 YKK Brass Zipper
- 3/4" x 2 1/4" Belt Loops
- Triple Needle Stitching
- Back Pockets Reinforced at Stress Areas (See Inside of Garment)
- Oversized Watch Pocket
- 13" Deep Front Pockets

# Wrangler® WORKWEAR

## WRANGLER RIGGS WORKWEAR® TECHNOLOGIES:

### COOL VANTAGE™

Cool, dry and comfortable. Wrangler® RIGGS WORKWEAR® Cool Vantage™ technology wicks sweat away from the body 5X faster, and provides unrestricted movement, keeping you cool, dry and comfortable no matter how hard you work.

### ADVANCED COMFORT

Moves with you. This unique fabric construction, exclusive to The Wrangler® Brand, features 4-way flex for a comfortable fit and added mobility as you work. Durable and dependable, Advanced Comfort Denim lasts two times longer.



**Advanced mobility for greater productivity.** Exclusive to Wrangler® RIGGS WORKWEAR®, all work jeans, pants and shorts feature gusseted crotch construction for added freedom of movement. Work shirts combine side gussets with generous relaxed fits for greater extension and flexibility.



**Unmatched durability, comfort and dependability.** Developed by leading fabric engineers and exclusive to Wrangler® RIGGS WORKWEAR®, Durashield® is denim fabric made of fibers that move during wear and washing to reduce abrasion and protect the denim color.



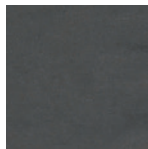
**Unbelievable strength, tear-resistance and breathability.** Wrangler® RIGGS WORKWEAR® Ripstop fabric is medium-weight 10 oz. 100% cotton, the very definition of "performance fabric". A viable alternative to denim, it provides year round comfort and protection.



WOMEN'S WORK PANT | REGULAR FIT



Mid-Rise  
Reinforced Back Pockets  
Cell Phone / Utility Pocket  
Fits Over Boots  
Imported



**3WF04CH**  
**a**  
Charcoal  
8.5 oz.  
98% Cotton/  
2% Spandex Canvas  
Sizes | G27Y

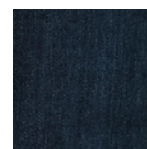


**3WF04BR**  
**a**  
Bark  
8.5 oz.  
98% Cotton/  
2% Spandex Canvas  
Sizes | G27Y

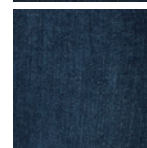
WOMEN'S 5 POCKET JEAN | REGULAR FIT



Mid-Rise  
Reinforced Back Pockets  
Patented Reinforcement on  
Front Pocket  
Fits Over Boots  
Imported



**3WF05DR**  
**a**  
Dark Rinse  
11 oz.  
74% Cotton/25% Polyester/  
1% Spandex  
Sizes | G27Y



**3WF05LS**  
**a**  
Light Stone  
11.5 oz.  
74% Cotton/25% Polyester/  
1% Spandex  
Sizes | G27Y

		G27Y										
		0	2	4	6	8	10	12	14	16	18	20
Inseam	30	.	.	.	.	.	.	.	.	.	.	.
	32	.	.	.	.	.	.	.	.	.	.	.
	34	.	.	.	.	.	.	.	.	.	.	.
		.	.	.	.	.	.	.	.	.	.	.



WOMEN'S PERFORMANCE  
T-SHIRTS

3/4 SLEEVE PERFORMANCE T-SHIRTS



1/12 Solid, Hanging  
Imported



MOISTURE WICKING



**3WF75SG** | Sea Green/Grey  
5 oz.  
60% Cotton/  
40% Polyester  
Sizes | 106A  
**a**

**3WF75BG** | Berry/Grey  
5 oz.  
60% Cotton/  
40% Polyester  
Sizes | 106A  
**a**

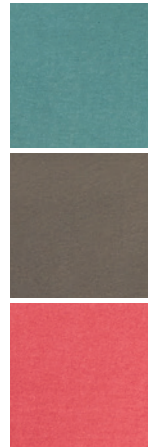
SHORT SLEEVE PERFORMANCE T-SHIRTS



1/12 Solid, Hanging  
Imported



MOISTURE WICKING



**3WF70GR** | Sea Green  
5 oz.  
60% Cotton/  
40% Polyester  
Sizes | 007N  
**a**

**3WF70CH** | Charcoal  
5 oz.  
60% Cotton/  
40% Polyester  
Sizes | 007N  
**a**

**3WF70BY** | Berry  
5 oz.  
60% Cotton/  
40% Polyester  
Sizes | 007N  
**a**

106A					
XS	S	M	L	XL	XXL
REG	•	•	•	•	•

007N					
XS	S	M	L	XL	XXL 3XL
•	•	•	•	•	•

WOMENS WORK JACKET



Lower Front Hand Pockets with Zipper Closure  
 Pencil / Tool Pocket on Left Sleeve  
 1/12 Solid, Hanging  
 Imported



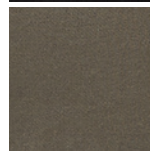
MOISTURE WICKING



**3WF18BK**

**a**

Black  
 8 oz.  
 60% Cotton/  
 40% Polyester Fleece  
 Sizes | 0066



**3WF18CH**

**a**

Charcoal  
 8 oz.  
 60% Cotton/  
 40% Polyester Fleece  
 Sizes | 0066

<b>0066</b>					
XS	S	M	L	XL	XXL
•	•	•	•	•	•



**Wrangler**  
RIGGS  
WORKWEAR

ADVANCED COMFORT

**ADVANCED COMFORT**



**MOVES WITH YOU**



**2X LONGER LASTING**



ADVANCED COMFORT FIVE POCKET | RELAXED FIT



Sits At Waist  
Deep Front Pockets  
Imported

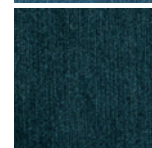


STRETCH



**3WAC5MS**  
a

Mid Stone  
13.5 oz.  
70% Cotton/  
29% Polyester/  
1% Spandex  
Sizes | A52M



**3WAC5DT**  
a

Dark Tint  
13.5 oz.  
70% Cotton/  
29% Polyester/  
1% Spandex  
Sizes | A52M

		A52M															
		30	31	32	33	34	35	36	38	40	42	44	46	48	50	52	54
Inseam	30	.	.	.	.	.	.	.	.	.	.	.	.	.	.	.	.
	32	.	.	.	.	.	.	.	.	.	.	.	.	.	.	.	.
	34	.	.	.	.	.	.	.	.	.	.	.	.	.	.	.	.
	36	.	.	.	.	.	.	.	.	.	.	.	.	.	.	.	.

CORDURA® IS A REGISTERED TRADEMARK OF INVISTA FOR DURABLE FABRICS.

ADVANCED COMFORT  
RANGER PANT



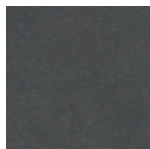
ADVANCED COMFORT LIGHTWEIGHT RANGER PANT | RELAXED FIT



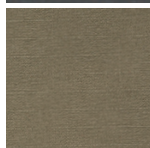
1000 Denier **CORDURA**® Fabric Lined Back Pockets  
Roomy Side Cargo Pockets with Flaps and Concealed Snaps  
Right Side Hammer Loop Imported



STRETCH



**3WA66CH**  
**a** Charcoal  
8.5 oz.  
98% Cotton/  
2% Spandex Canvas  
Sizes | A58J



**3WA66BR**  
**a** Bark  
8.5 oz.  
98% Cotton/  
2% Spandex Canvas  
Sizes | A58J

		A58J																			
		WAIST	30	31	32	33	34	35	36	38	40	42	44	46	48	50	52	54	56	58	60
Inseam	30																				
	32																				
	34																				
	36																				

		A42R												
		WAIST	30	31	32	33	34	35	36	38	40	42	44	46
Inseam	30													
	32													
	34													
	36													

		A41S												
		WAIST	30	31	32	33	34	35	36	38	40	42	44	46
Inseam	30													
	32													
	34													
	36													

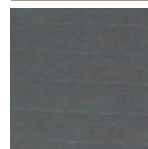
RANGER PANT | RELAXED FIT



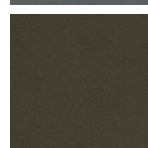
1000 Denier **CORDURA**® Fabric Lined Back Pockets  
Reinforced Knees with Dirt Drop Vent  
Roomy Side Cargo Pockets with Flaps and Concealed Snaps  
Right Side Hammer Loop Imported



**3W060BR**  
**a** Bark  
10 oz.  
100% Cotton Ripstop  
Sizes | A58J



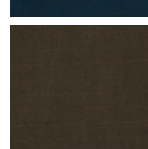
**3W060ST**  
**a** Slate  
10 oz.  
100% Cotton Ripstop  
Sizes | A42R



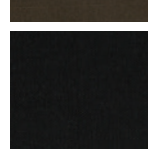
**3W060LD**  
**a** Lodon  
10 oz.  
100% Cotton Ripstop  
Sizes | A58J



**3W060NY**  
**a** Navy  
10 oz.  
100% Cotton Ripstop  
Sizes | A41S



**3W060DB**  
**a** Dark Brown  
10 oz.  
100% Cotton Ripstop  
Sizes | A52M



**3W060BL**  
**a** Black  
10 oz.  
100% Cotton Ripstop  
Sizes | A52M



# TECHNICIAN PANT



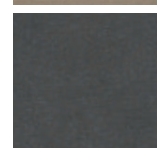
TECHNICIAN PANT | RELAXED FIT



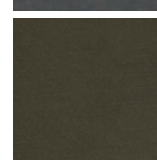
Right Side Cell Phone Pocket Imported



**3W045DK** Dark Khaki  
**a** 6.5 oz.  
100% Cotton Ripstop  
Sizes | A41S



**3W045CH** Charcoal  
**a** 6.5 oz.  
100% Cotton Ripstop  
Sizes | A41S



**3W045LD** Loden  
**a** 6.5 oz.  
100% Cotton Ripstop  
Sizes | A41S

		A41S												
		WAIST	30	31	32	33	34	35	36	38	40	42	44	46
Inseam	30		•	•	•	•	•	•	•	•	•	•	•	•
	32			•	•	•	•	•	•	•	•	•	•	•
	34				•	•	•	•	•	•	•	•	•	•
	36					•	•	•	•	•	•	•	•	•

CARPENTER PANT



CARPENTER | RELAXED FIT

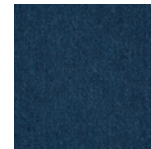


1000 Denier **CORDURA**® Fabric  
Lined Back Pockets  
Tool Pocket Detail  
Right Side Hammer Loop  
Imported



**3W020VI**  
**a**

Vintage Indigo  
14.5 oz.  
100% Cotton  
**durashield**® Denim  
Sizes | A58J



**3W020AI**  
**a**

Antique Indigo  
14.5 oz.  
100% Cotton  
**durashield**® Denim  
Sizes | A58J



**3W020DK**  
**a**

Dark Khaki  
10 oz.  
100% Cotton Ripstop  
Sizes | A41S



**3W020LD**  
**a**

Loden  
10 oz.  
100% Cotton  
Ripstop  
Sizes | A58J



**3W020ST**  
**a**

Slate  
10 oz.  
100% Cotton  
Ripstop  
Sizes | A41S



**3W020BR**  
**a**

Bark  
10 oz.  
100% Cotton  
Ripstop  
Sizes | A52M



**3W020BL**  
**a**

Black  
10 oz.  
100% Cotton  
Ripstop  
Sizes | A41S

		A52M															
WAIST		30	31	32	33	34	35	36	38	40	42	44	46	48	50	52	54
Inseam	30	.	.	.	.	.	.	.	.	.	.	.	.	.	.	.	.
	32	.	.	.	.	.	.	.	.	.	.	.	.	.	.	.	.
	34	.	.	.	.	.	.	.	.	.	.	.	.	.	.	.	.
	36	.	.	.	.	.	.	.	.	.	.	.	.	.	.	.	.

		A58J																		
WAIST		30	31	32	33	34	35	36	38	40	42	44	46	48	50	52	54	56	58	60
Inseam	30	.	.	.	.	.	.	.	.	.	.	.	.	.	.	.	.	.	.	.
	32	.	.	.	.	.	.	.	.	.	.	.	.	.	.	.	.	.	.	.
	34	.	.	.	.	.	.	.	.	.	.	.	.	.	.	.	.	.	.	.
	36	.	.	.	.	.	.	.	.	.	.	.	.	.	.	.	.	.	.	.



UTILITY PANT  
5 POCKET

UTILITY JEAN | RELAXED FIT

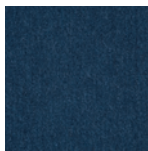


1000 Denier **CORDURA®** Fabric  
Lined Back Pockets  
Reinforced Front Panels with  
Wide Dirt Drop Vent  
Right Side Tool Pocket  
Right Side Hammer Loop  
Imported

5 POCKET | RELAXED FIT



Imported



**3W030AI**  
**a** Antique Indigo  
14.5 oz.  
100% Cotton **durashield®** Denim  
Sizes | A52M



**3W050AI**  
**a** Antique Indigo  
14.5 oz.  
100% Cotton **durashield®** Denim  
Sizes | A52M

		A52M															
		30	31	32	33	34	35	36	38	40	42	44	46	48	50	52	54
Inseam	30	•	•	•	•	•	•	•	•	•	•	•	•	•	•	•	•
	32	•	•	•	•	•	•	•	•	•	•	•	•	•	•	•	•
	34	•	•	•	•	•	•	•	•	•	•	•	•	•	•	•	•
	36		•	•	•	•	•	•	•	•	•	•	•	•	•	•	•



WORKHORSE JEAN | RELAXED FIT

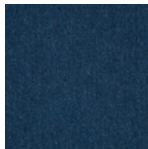


1000 Denier **CORDURA®** Fabric  
Lined Back Pockets  
Right Side Hammer Loop  
Imported

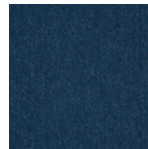
CONTRACTOR JEAN | RELAXED FIT



1000 Denier **CORDURA®** Fabric  
Lined Back Pockets  
Tool Pockets with Utility Loop  
Right Side Tool Pocket  
Imported



**3W001AI**  
**a** Antique Indigo  
14.5 oz.  
100% Cotton  
**durashield®** Denim  
Sizes | A58J



**3W040AI**  
**a** Antique Indigo  
12 oz.  
100% Cotton **durashield®**  
Denim  
Sizes | A52M

		A58J																		
WAIST		30	31	32	33	34	35	36	38	40	42	44	46	48	50	52	54	56	58	60
Inseam	30	•	•	•	•	•	•	•	•	•	•	•	•	•	•	•	•	•	•	•
	32	•	•	•	•	•	•	•	•	•	•	•	•	•	•	•	•	•	•	•
	34	•	•	•	•	•	•	•	•	•	•	•	•	•	•	•	•	•	•	•
	36	•	•	•	•	•	•	•	•	•	•	•	•	•	•	•	•	•	•	•

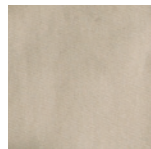


# TWILL WORK SHIRT

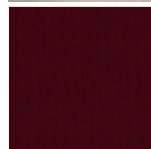
TWILL WORK SHIRT



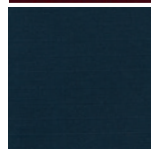
**room2move®** Fit with Side Gusset Detail for Greater Range of Motion  
 Peached Finish and Garment Washed for Softness  
 Button-Down Collar  
 Two Button Front Chest Pockets  
 Two Button Adjustable Cuffs  
 Hidden Utility Loop  
 1/12 Solid  
 Imported



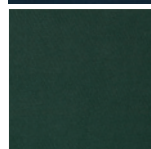
**3W501KH** | Khaki  
 (a) 7 oz.  
 100% Cotton Twill  
 Sizes | 09AA



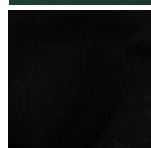
**3W501BG** | Burgundy  
 (a) 7 oz.  
 100% Cotton Twill  
 Sizes | 09AA



**3W501NV** | Navy  
 (a) 7 oz.  
 100% Cotton Twill  
 Sizes | 09AA



**3W501FG** | Forest Green  
 (a) 7 oz.  
 100% Cotton Twill  
 Sizes | 09AA



**3W501BK** | Black  
 (a) 7 oz.  
 100% Cotton Twill  
 Sizes | 009J

DENIM WORK SHIRT



**room2move®** Fit  
 Two Button-Front Chest Pockets  
 Button-Down Collar  
 Two Button Adjustable Cuffs  
 Hidden Utility Loop  
 Imported



**3W510AN** | Antique  
 a 6.5 oz.  
 100% Cotton Ring-Spun  
 Denim  
 Sizes | 010V

CHAMBRAY WORK SHIRT



**room2move®** Fit with Side Gusset Detail for  
 Greater Range of Motion  
 Enzyme Washed for Softness  
 Button-Down Collar  
 Two Front Chest Pockets  
 Hidden Utility Loop  
 Imported



**3W531BL** | Light Blue  
 a 5 oz.  
 100% Cotton Chambray  
 Sizes | 09AA

009J		M	L	XL	XXL	LT	XLT	2XT	3XT	4XT
REG		•	•	•						
TALL						•	•	•	•	•

010V		M	L	XL	XXL	LT	XLT	2XT	3XT	3X	4X
		•	•	•	•	•	•	•	•	•	•

09AA		M	L	XL	XXL	LT	XLT	2XT	3XT	4XT
		•	•	•	•	•	•	•	•	•



Wrangler

RIGGS WORKWEAR

PERFORMANCE T-SHIRT  
POCKET T'S

POCKET PERFORMANCE T-SHIRT

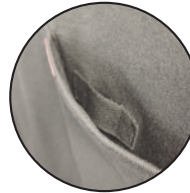


Chest Pocket with Reinforcement for Durability  
Imported



MOISTURE WICKING

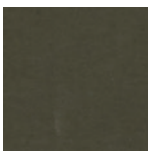
POCKET T-SHIRT



Comfortable Relaxed Fit  
Vented Taped Sideseams  
Left Chest Pocket  
Taped Neck Seam  
Tagless Label  
Imported



HIDDEN UTILITY LOOP



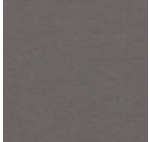
**3W701HG**  
**a** Hazel Green  
5 oz.  
60% Cotton/40% Polyester  
Sizes | 010V



**3W701CR**  
**a** Currant Red  
5 oz.  
60% Cotton/40% Polyester  
Sizes | 010V



**3W701OB**  
**a** Oxford Blue  
5 oz.  
60% Cotton/40% Polyester  
Sizes | 010V



**3W701NK**  
**a** Nickel  
5 oz.  
60% Cotton/40% Polyester  
Sizes | 010V



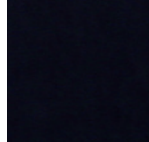
**3W700AH**  
**a** Ash Heather  
7 oz.  
90% Cotton/  
10% Polyester  
Sizes | 0103



**3W700BG**  
**a** Burgundy  
7 oz.  
100% Cotton Ring  
Spun Jersey  
Sizes | 0103



**3W700FG**  
**a** Forest Green  
7 oz.  
100% Cotton Ring  
Spun Jersey  
Sizes | 0103



**3W700NV**  
**a** Navy  
7 oz.  
100% Cotton Ring  
Spun Jersey  
Sizes | 0103



**3W700SG**  
**a** Safety Green  
7 oz.  
100% Cotton Ring  
Spun Jersey  
Sizes | 0103



**3W700BK**  
**a** Black  
7 oz.  
100% Cotton Ring  
Spun Jersey  
Sizes | 0103



**3W700SO**  
**a** Safety Orange  
7 oz.  
100% Cotton Ring  
Spun Jersey  
Sizes | 0103

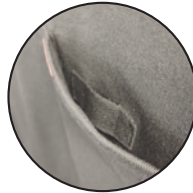


**3W700CH**  
**a** Charcoal Grey  
Heather  
7 oz.  
90% Cotton/  
10% Polyester  
Sizes | 0103

010V

M L XL XXL LT XLT 2XT 3XT 3X 4X

HENLEY



HIDDEN UTILITY LOOP

- Comfortable Relaxed Fit
- Vented Taped Sideseams
- Left Chest Pocket
- Two Button Placket
- Tagless Label
- Imported



**3W7500H** Oatmeal Heather  
 7 oz.  
 90% Cotton/  
 10% Polyester  
 Sizes | 0103



**3W750CH** Charcoal Grey  
 7 oz.  
 90% Cotton/  
 10% Polyester  
 Sizes | 0103



**3W750FG** Forest Green  
 7 oz.  
 100% Cotton Ring  
 Spun Jersey  
 Sizes | 0103



**3W750BG** Burgundy  
 7 oz.  
 100% Cotton Ring  
 Spun Jersey  
 Sizes | 0103



**3W750NV** Navy  
 7 oz.  
 100% Cotton Ring  
 Spun Jersey  
 Sizes | 0103



**3W750AH** Ash Heather  
 7 oz.  
 90% Cotton/  
 10% Polyester  
 Sizes | 0103

0103										
	M	L	XL	XXL	LT	XLT	2XT	3XT	3X	4X
REG	•	•	•	•						
TALL					•	•	•	•		
BIG									•	•



## FR EXCLUSIVE FEATURES

### ALL BOTTOMS:

- ARC-Resistant Button Waistband Closure
- High Quality Brass Zipper with Nomex Zipper Tape
- Flame Resistant Pocketing
- Nomex Thread Used on All Garment Seams
- Safety Orange Outside ID for High Visibility

### WRANGLER BOTTOMS:

COWBOY CUT FR	RETRO FR	20X FR	WOMEN'S FR
13MWZ   Original Fit	77   Slim Boot	33   Extreme Relaxed	Mae   Mid-Rise
31MWZ   Relaxed Fit	88   Slim Straight	42   Vintage Boot	URJ   High-Rise
36MWZ   Slim Fit			
47MWZ   Regular Fit			

### WRANGLER RIGGS BOTTOMS:

- Room2Move Fit  
Advanced mobility for greater productivity. Exclusive to Wrangler RIGGS Workwear, all jeans, pants and shorts feature gusseted crotch construction for added freedom of movement.
- Reinforced Back Pockets at Stress Areas
- Triple Needle Stitching

### RIGGS FR

Carpenter  
5-Pocket

## TECHNOLOGIES

### ADVANCED COMFORT



MOVES WITH YOU  
4-WAY FLEX TECHNOLOGY

This unique fabric construction, exclusive to The Wrangler® Brand, features 4-Way Flex technology for a comfortable fit and added mobility as you work. Durable and dependable, Advanced Comfort Denim lasts two times longer.

### COOL VANTAGE™



COOL & DRY  
MOISTURE WICKING



COMFORTABLE  
UNRESTRICTED MOVEMENT

Wrangler® Cool Vantage™ technology wicks sweat away from the body, pulling moisture to the outside of the garment where it can evaporate quickly. This exclusive technology, in combination with our FR protection, provides enhanced comfort and unrestricted movement, keeping you cool, dry and comfortable no matter how hard you work.

## CLASSIFICATIONS



The standard for flame resistant garments providing a degree of protection to the wearer and reducing the severity of burn injuries from short-duration thermal exposure or accidental exposure to flash fires.

Noted Wrangler FR garments are certified by Underwriters Laboratories to meet the requirements of NFPA 2112 Standard on Flame Resistant Garments for Protection of Industrial Personnel Against Flash Fire, 2012 edition.



The standard for electrical safety in the workplace (NFPA 70e) has developed a matrix of Hazard/Risk Categories (CAT) to help match the tasks being performed on energized electrical equipment to appropriate flame resistant protective clothing.

The garments listed in the CAT 2 category have arc ratings between 8 cal/cm<sup>2</sup> and 24 cal/cm<sup>2</sup>.

## WHAT IS AN ARC RATING?

The maximum incident energy resistance of a material expressed in calories per square centimeter prior to breakopen or the onset of a second-degree burn.

### Arc Thermal Performance Value (ATPV)

The incident energy, expressed in cal/cm<sup>2</sup>, on a material or a multilayer system of materials that results in a 50% probability that sufficient heat transfer through the tested specimen is predicted to cause the onset of a 2nd degree burn injury based on the Stoll curve.

### Breakopen Threshold Energy (E<sub>BT</sub>)

Reported when the ATPV cannot be determined because the fabric breaks open in response to the thermal energy exposure of the electric arc. The lower value of either Breakopen Energy Threshold or ATPV is reported as the arc rating for the material.

## HOW DO I CHOOSE THE CORRECT FLAME-RESISTANT GARMENTS?

Garments are specified based on the employer's evaluation of workplace hazards. Protective garments, which function as wearing apparel for normal work activities, must be comfortable and durable while achieving appearance that is acceptable to both the employer and the wearer. In addition to these general considerations, there may be other hazards present such as chemical or molten substance exposure. Finally, these multi-use garments must be able to withstand laundering to remove soils and flammable contaminants and be returned to service without excessive color loss, fuzzing/pilling (surface appearance change) or excessive shrinkage.

## WHAT IS THE EMPLOYER'S RESPONSIBILITY?

Under paragraph 5a1, the General Duty clause of the federal OSHA Act, it is the employer's responsibility to identify risks and hazards in the workplace and seek out appropriate protective garments and equipment for the protection of workers. In making this hazard assessment, the employer must consider the risks present and the most appropriate means of addressing those risks. Where ignition risks are present, flame-resistant protective apparel can become a prudent part of an action plan to address these concerns.

## STAINED or SOILED GARMENT

If your flame-resistant garment becomes stained or soiled, and you cannot confirm that the contaminants have been completely removed from the garment, please be aware that the garment may be compromised.

## GARMENT REPAIR and MAINTENANCE

For information regarding the repair and maintenance of flame-resistant fabrics, please see ASTM Standard F 1449 (Industrial Laundering of Flame, Thermal and Arc Resistant Clothing) and ASTM F 2757 (Guide for Home Laundering Care and Maintenance of Flame, Thermal and Arc Resistant Clothing). When making repairs to the garment, you must use materials equivalent to the original materials. If trim items such as zippers or labels need repair, they must also be repaired with materials equivalent to the original materials.

## GARMENT LIFE

When laundered by recommended procedures, durable flame-resistant fabrics are guaranteed to be flame-resistant for the useful life of the garment. Garment life will vary depending on wear and laundering conditions.

## PROCESSING / CLEANING

FR garments can be home laundered – follow care instructions.

Flame resistant garments can be washed with other garments but it is recommended that you sort and wash them separately to prevent contamination with other possibly flammable fibers.

It is recommended that you turn your garment inside out.

You can use your household laundry detergent but be sure it does NOT contain fabric softener or bleach. Fabric softener can coat the fabric making it no longer flame resistant. Fabric softener can also act as fuel in the event of a fire. Bleach and Hydrogen Peroxide should NEVER be used because they can break down the Flame Resistant treatment on your fabric.

Also, NEVER starch your garments. Starch is a propellant and propellants are almost always flammable.

“Soft” water (less than 7 grains per gallon of hardness) is required for home laundering flame resistant garments. “Hard” water can leave residue on garments that mask flame resistance.

If needed, steam or dry iron garments at the temperature indicated on care label.

Dry cleaning is optional but not recommended unless necessary to remove stains. Confirm that no starch is used in the process.

## NOTES

**DO NOT USE DEET** on Flame Resistant Clothing.



Wrangler  
FLAME RESISTANT

WRANGLER FR

WRANGLER | REGULAR FIT



WRANGLER FR | REGULAR FIT



ORIGINAL FIT



**MOVES WITH YOU**  
4-WAY FLEX TECHNOLOGY

**FRAC47D**  
a

Dark Tint  
12 oz.  
94% Cotton/  
5% Polyester  
1% Spandex  
ATPV 15 CAL/CM<sup>2</sup>  
Sizes | A54C



**COOL & DRY**  
MOISTURE WICKING



**COMFORTABLE**  
UNRESTRICTED MOVEMENT

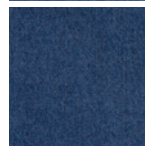
**FRCV47T**  
a

True Blue  
12.5 oz.  
70% Cotton/  
30% Modacrylic  
ATPV 15 CAL/CM<sup>2</sup>  
Sizes | A54C



**FR13MMS**  
a

Stonewash  
14.75 oz.  
100% Cotton  
ATPV 23 CAL/CM<sup>2</sup>  
Sizes | A53G



**FR13MWZ**  
a

Prewash  
14.75 oz.  
100% Cotton  
ATPV 23 CAL/CM<sup>2</sup>  
Sizes | A53G

2112

CAT 2




A54C

WAIST	28	29	30	31	32	33	34	35	36	38	40	42
30	•	•	•	•	•	•	•	•	•	•	•	•
32	•	•	•	•	•	•	•	•	•	•	•	•
34	•	•	•	•	•	•	•	•	•	•	•	•
36	•	•	•	•	•	•	•	•	•	•	•	•
38	•	•	•	•	•	•	•	•	•	•	•	•




RELAXED FIT



**FR31MWZ**  Prewash  
14.75 oz.  
100% Cotton  
ATPV 23 CAL/CM<sup>2</sup>  
Sizes | A53G


SLIM FIT



**FR36MWZ**  Prewash  
14.75 oz.  
100% Cotton  
ATPV 23 CAL/CM<sup>2</sup>  
Sizes | A56D

REGULAR FIT LIGHTWEIGHT



**FR47MLW**  Prewash  
11.75 oz.  
100% Cotton  
ATPV 21 CAL/CM<sup>2</sup>  
Sizes | A54C

2112

CAT  
2



		A53G														
WAIST		28	29	30	31	32	33	34	35	36	38	40	42	44	46	
Inseam	30	.	.	.	.	.	.	.	.	.	.	.	.	.	.	
	32	.	.	.	.	.	.	.	.	.	.	.	.	.	.	
	34	.	.	.	.	.	.	.	.	.	.	.	.	.	.	
	36	.	.	.	.	.	.	.	.	.	.	.	.	.	.	
	38	.	.	.	.	.	.	.	.	.	.	.	.	.	.	

		A56D														
WAIST		27	28	29	30	31	32	33	34	35	36	38	40	42		
Inseam	29	.	.	.	.	.	.	.	.	.	.	.	.	.		
	30	.	.	.	.	.	.	.	.	.	.	.	.	.		
	32	.	.	.	.	.	.	.	.	.	.	.	.	.		
	34	.	.	.	.	.	.	.	.	.	.	.	.	.		
	36	.	.	.	.	.	.	.	.	.	.	.	.	.		
38	.	.	.	.	.	.	.	.	.	.	.	.	.			



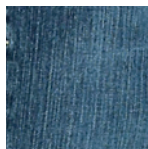
RETRO FR | SLIM BOOT



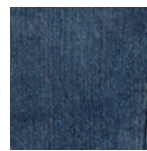
SLIM BOOT



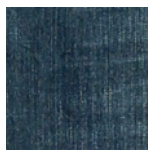
MOVES WITH YOU  
4-WAY FLEX TECHNOLOGY



**FR77MCN**  
a Caden Dark Tint  
12 oz.  
93% Cotton/  
6% Polyester/  
1% Spandex  
ATPV 17 CAL/CM<sup>2</sup>  
Sizes | A54C



**FR77MON**  
a Owen  
Dark Tint  
12.75 oz.  
100% Cotton  
ATPV 17 CAL/CM<sup>2</sup>  
Sizes | A54C



**FR77MTM**  
a Timothy Midstone  
12 oz.  
93% Cotton/  
6% Polyester/  
1% Spandex  
ATPV 17 CAL/CM<sup>2</sup>  
Sizes | A54C



Wrangler  
RETRO®

		A54C												
		WAIST	28	29	30	31	32	33	34	35	36	38	40	42
INSEAM	30													
	32													
	34													
	36													
	38													

20X FR

Wrangler® **FR**  
FLAME RESISTANT

**FR**



20X FR | VINTAGE BOOT



**MOVES WITH YOU**  
4-WAY FLEX TECHNOLOGY

**FRAC42D** | Dark Denim  
12 oz.  
94% Cotton/  
5% Polyester/  
1% Spandex  
ATPV 15 CAL/CM²  
Sizes | A54C

**2112**

**CAT  
2**

**ADVANCED  
COMFORT**

**Wrangler®  
20X**



Wrangler  
FLAME RESISTANT

20X FR

20X FR | BOOT CUT



**FRCV42V** | Vintage Wash  
12.5 oz.  
70% Cotton/  
30% Modacrylic  
ATPV 15 CAL/CM<sup>2</sup>  
Sizes | A66L

WRANGLER 20X FR | EXTREME RELAXED FIT



**FR33MWX** | Denim  
13.75 oz  
100% Cotton  
ATPV 19 CAL/CM<sup>2</sup>  
Sizes | A54C

COOL  
VANTAGE™



Wrangler  
20X

		A66L														
		WAIST	28	29	30	31	32	33	34	35	36	38	40	42	44	46
Inseam	30															
	32															
	34															
	36															
	38															


20X FR

Wrangler® **FR**  
FLAME RESISTANT


**FR**

WRANGLER 20X FR | VINTAGE BOOT




**FR42MWD**   
**HRC 2 ONLY** Dark Wash  
 13 oz.  
 68% Cotton/  
 32% Modacrylic  
 ATPV 15 CAL/CM<sup>2</sup>  
 Sizes | A54C



**FR42MWR**   
 Rinse Wash  
 13 oz.  
 68% Cotton/  
 32% Modacrylic  
 ATPV 18 CAL/CM<sup>2</sup>  
 Sizes | A54C



**FR42MWM**   
 Midstone  
 13 oz.  
 68% Cotton/  
 32% Modacrylic  
 ATPV 18 CAL/CM<sup>2</sup>  
 Sizes | A54C

2112

CAT  
2

Wrangler®  
20X

		A54C											
WAIST		28	29	30	31	32	33	34	35	36	38	40	42
Inseam	30	.	.	.	.	.	.	.	.	.	.	.	.
	32	.	.	.	.	.	.	.	.	.	.	.	.
	34	.	.	.	.	.	.	.	.	.	.	.	.
	36	.	.	.	.	.	.	.	.	.	.	.	.
	38	.	.	.	.	.	.	.	.	.	.	.	.



Wrangler  
FLAME RESISTANT

RIGGS FR

5 POCKET | RELAXED FIT



**MOVES WITH YOU**  
4-WAY FLEX TECHNOLOGY

**FRC50M**  
a

Midstone  
12 oz.  
94% Cotton/  
5% Polyester  
1% Spandex  
ATPV 15 CAL/CM<sup>2</sup>  
Sizes | A63B

5 POCKET | RELAXED FIT



**COOL & DRY**  
MOISTURE WICKING



**COMFORTABLE**  
UNRESTRICTED MOVEMENT

**FRCV50S**  
a

Stonewash  
12.5 oz.  
70% Cotton/  
30% Modacrylic  
ATPV 15 CAL/CM<sup>2</sup>  
Sizes | A63B

2112

CAT  
2

**COOL  
VANTAGE™**

**Wrangler**  
RIGGS  
WORKWEAR

RIGGS FR

Wrangler® FR  
FLAME RESISTANT

FR

CARPENTER JEAN | RELAXED FIT



5 POCKET | RELAXED FIT



FR3W020  
a

Denim  
14.75 oz.  
100% Cotton  
ATPV 22 CAL/CM²  
Sizes | A63B



FR3W050  
a

Denim  
14.75 oz.  
100% Cotton  
ATPV 22 CAL/CM²  
Sizes | A63B

2112

CAT  
2



		A63B																			
WAIST		29	30	31	32	33	34	35	36	38	40	42	44	46	48	50	52	54	56	58	60
Inseam	30	.	.	.	.	.	.	.	.	.	.	.	.	.	.	.	.	.	.	.	.
	32	.	.	.	.	.	.	.	.	.	.	.	.	.	.	.	.	.	.	.	.
	34	.	.	.	.	.	.	.	.	.	.	.	.	.	.	.	.	.	.	.	.
	36	.	.	.	.	.	.	.	.	.	.	.	.	.	.	.	.	.	.	.	.



WESTERN WORKSHIRTS FR



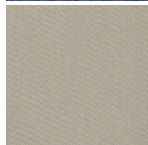
**2112**

Authentic Western Styling  
Two Spade Pockets with Pencil Slot  
Snap Closure  
Nomex (FR) Thread Used in All Garment Seams  
Safety Orange Outside ID for High Visibility

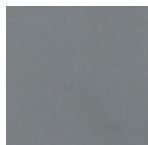
**CAT 2**



**FR12127**  
Denim  
7.5 oz.  
100% Cotton  
ATPV 8.9 CAL/CM<sup>2</sup>  
Sizes | 011B



**FR12140**  
Khaki  
7.5 oz.  
100% Cotton  
ATPV 9.2 CAL/CM<sup>2</sup>  
Sizes | 011B



**FR127CH**  
Charcoal  
6.5 oz.  
88% Cotton/  
12% Nylon  
ATPV 8.9 CAL/CM<sup>2</sup>  
Sizes | 011B



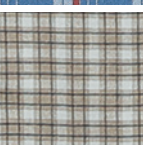
**FR122BW**  
Navy Plaid  
7.5 oz.  
100% Cotton  
ATPV 9.2 CAL/CM<sup>2</sup>  
Sizes | 011B



**FR123BL**  
Blue Plaid  
7.5 oz.  
100% Cotton  
ATPV 9.2 CAL/CM<sup>2</sup>  
Sizes | 011B



**FR131RD**  
Blue/Red Plaid  
6.5 oz.  
88% Cotton/  
12% Nylon  
ATPV 9.5 CAL/CM<sup>2</sup>  
Sizes | 011B



**FR124MM**  
Khaki/White Plaid  
6.5 oz.  
88% Cotton/  
12% Nylon  
ATPV 9.5 CAL/CM<sup>2</sup>  
Sizes | 011B

BASEBALL HENLEY KNIT SHIRT



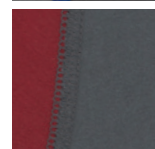
**2112**

Comfortable Relaxed Fit  
7 oz. Jersey Knit Fabric  
Nomex Thread Used on All Garments Seams  
Safety Orange Outside ID for High Visibility  
Left Sleeve Pocket  
1/12 Solid  
Imported

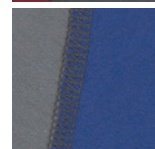
**CAT 2**



**FR161GY**  
Grey  
100% Cotton  
ATPV 8.9 CAL/CM<sup>2</sup>  
Sizes | 006D



**FR161RD**  
Red  
100% Cotton  
ATPV 8.9 CAL/CM<sup>2</sup>  
Sizes | 006D



**FR161BL**  
Blue  
100% Cotton  
ATPV 8.9 CAL/CM<sup>2</sup>  
Sizes | 006D



006D					
S	M	L	XL	2XL	3XL

011B											
REG	S	M	L	XL	XXL	LT	XLT	2XT	3XT	3X	4X
TALL											
BIG											



TWO FLAP POCKETS



**2112**  
**CAT 2**

Comfortable Relaxed Fit  
Pocket with Pencil Slot  
Button Closure  
Nomex (FR) Thread Used in All Garment Seams  
Safety Orange Outside ID for High Visibility



**FR3W5KH** Khaki  
7.5 oz.  
100% Cotton  
ATPV 9.2 CAL/CM<sup>2</sup>  
Sizes | 0100



**FR3W5GY** Grey  
7.5 oz.  
100% Cotton  
ATPV 9.2 CAL/CM<sup>2</sup>  
Sizes | 0100

LONG SLEEVE HENLEY



**CAT 2**

Comfortable Relaxed Fit  
Front Chest Pocket  
Nomex (FR) Thread Used in All Garment Seams  
Safety Orange Outside ID for High Visibility



**FR3W8NV** Navy  
7 oz.  
100% Cotton Jersey  
ATPV 15 CAL/CM<sup>2</sup>  
Sizes | 0103



**FR3W8GY** Grey  
7 oz.  
100% Cotton Jersey  
ATPV 15 CAL/CM<sup>2</sup>  
Sizes | 0103



0100										
	M	L	XL	XXL	LT	XLT	2XT	3XT	3X	4X
REG	•	•	•	•						
TALL					•	•	•	•		
BIG									•	•

0103										
	M	L	XL	XXL	LT	XLT	2XT	3XT	3X	4X
REG	•	•	•	•						
TALL					•	•	•	•		
BIG									•	•



Wrangler **FR**  
FLAME RESISTANT

FR JEANS



WOMEN'S FR



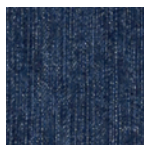
**FRW10RN**  
③  
Rinse Wash  
13 oz.  
100% Cotton  
ATPV 18 CAL/CM<sup>2</sup>  
Sizes | G31J



**FRW10CH**  
③  
Crosshatch  
13.75 oz.  
100% Cotton  
ATPV 19 CAL/CM<sup>2</sup>  
Sizes | G31J



**FRW10BL**  
③  
Blue Stone  
14.75 oz.  
100% Cotton  
ATPV 22 CAL/CM<sup>2</sup>  
Sizes | G31J



**FRW10DD**  
③  
Denim  
12.75 oz.  
100% Cotton  
ATPV 15 CAL/CM<sup>2</sup>  
Sizes | G31J

WOMEN'S RETRO FR | MAE BOOT CUT



**FRAC1DI**  
③  
Mae | Dark Indigo  
12 oz.  
94% Cotton/  
5% Polyester/  
1% Spandex  
ATPV 15.0 CAL/CM<sup>2</sup>  
Sizes | G31J



**MOVES WITH YOU**  
4-WAY FLEX TECHNOLOGY



		G31J										
		1	3	5	7	9	11	13	15	17	19	
Inseam	30	.	.	.	.	.	.	.	.	.	.	.
	32	.	.	.	.	.	.	.	.	.	.	.
	34	.	.	.	.	.	.	.	.	.	.	.
	36	.	.	.	.	.	.	.	.	.	.	.

Wrangler  
RETRO

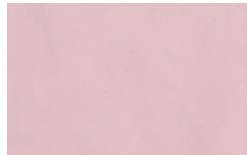
SNAP CLOSURE



2112

CAT  
2

Authentic Western Styling  
Two Spade Pockets with Pencil Slot  
Nomex (FR) Thread Used in All Garment Seams  
Safety Orange Outside ID for High Visibility  
Snap/Button Closure



FRLW05K



Pink  
Snap Closure  
7.0 oz.  
88% Cotton/12% Nylon  
ATPV 9.2 CAL/CM²  
Sizes | 106B



106B					
S	M	L	XL	XXL	XXXL
•	•	•	•	•	•

RW

Wrangler<sup>®</sup>

WRANGLER<sup>®</sup> RUGGED WEAR

PERFORMANCE SERIES REGULAR FIT



Comfort Flex Waistband  
Comfort Stretch Denim  
Regular Seat and Thigh  
Sits at the Waist  
Fits Over Boots  
Imported



**39952BW**  
**a**

Bleach Wash  
11.25 oz.  
99% Cotton/  
1% Spandex  
Sizes | A51D



**39952DI**  
**a**

Dark Indigo  
11.25 oz.  
99% Cotton/  
1% Spandex  
Sizes | A51D

PERFORMANCE SERIES RELAXED FIT

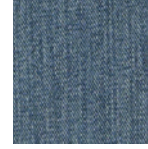


Comfort Flex Waistband  
Comfort Stretch Denim  
Relaxed Seat and Thigh  
Sits at the Waist  
Fits Over Boots  
Imported



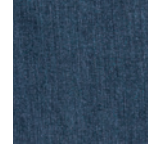
**35051MS**  
**a**

Medium Stone  
12.25 oz.  
99% Cotton/  
1% Spandex  
Sizes | A60H



**35051LS**  
**a**

Light Stone  
12.25 oz.  
99% Cotton/  
1% Spandex  
Sizes | A60H



**35051DS**  
**a**

Dark Stone  
12.5 oz.  
99% Cotton/  
1% Spandex  
Sizes | A60H

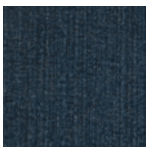
		A51D																
WAIST		28	29	30	31	32	33	34	36	38	40	42	44	46	48	50	52	54
Inseam	30																	
	32																	
	34																	
	36																	

		A60H																
WAIST		30	31	32	33	34	36	38	40	42	44	46	48	50	52	54	56	58
Inseam	29																	
	30																	
	32																	
	34																	
	36																	

RELAXED STRAIGHT FIT



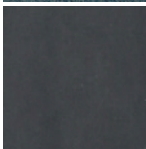
Relaxed Seat and Thigh  
Sits Just Below the Waist  
Straight Leg  
Fits Over Boots  
Imported



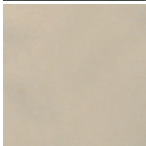
**31000UN**  
**a** Union  
12 oz.  
100% Cotton Denim  
Sizes | A63F



**31000MT**  
**a** Mediterranean  
13 oz.  
100% Cotton Denim  
Sizes | A63F



**31000TR**  
**a** Tar  
9 oz.  
100% Cotton Canvas  
Sizes | A63F



**31000GK**  
**a** Golden Khaki  
9 oz.  
100% Cotton Canvas  
Sizes | A63F

		A63F																		
		WAIST	30	31	32	33	34	35	36	38	40	42	44	46	48	50	52	54	56	58
Inseam	29																			
	30																			
	32																			
	34																			
	36																			

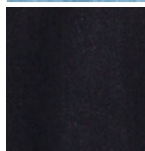
CLASSIC FIT JEANS



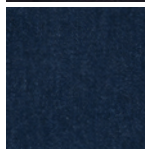
Regular Seat and Thigh  
Sits at the Waist  
Fits Over Boots  
Imported



**39902RI**  
**a** Rough Wash  
14.75 oz.  
100% Cotton Denim  
Sizes | A68F



**39902OB**  
**a** Black  
13.25 oz.  
100% Cotton Denim  
Sizes | A51D



**39902PW**  
**a** Prewashed  
14.75 oz.  
100% Cotton Denim  
Sizes | A68F

		A51D																	
		WAIST	28	29	30	31	32	33	34	36	38	40	42	44	46	48	50	52	54
Inseam	30																		
	32																		
	34																		
	36																		

		A68F																				
		WAIST	29	30	31	32	33	34	35	36	38	40	42	44	46	48	50	52	54	56	58	60
Inseam	29																					
	30																					
	31																					
	32																					
	34																					

RELAXED FIT JEANS



Relaxed Seat and Thigh  
Sits at the Waist  
Fits Over Boots  
Imported



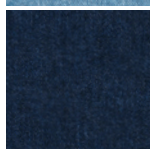
**35001GI** Grey Indigo  
**a** 14.5 oz.  
100% Cotton Denim  
Sizes | A104



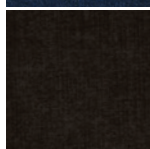
**35001AI** Antique Indigo  
**a** 14.5 oz.  
100% Cotton Denim  
Sizes | A104



**35001VI** Vintage Indigo  
**a** 14.5 oz.  
100% Cotton Denim  
Sizes | A104



**35001AN** Antique Navy  
**a** 14.5 oz.  
100% Cotton Denim  
Sizes | A60H



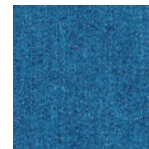
**35002OB** Black  
**a** 13.25 oz.  
100% Cotton Denim  
Sizes | A104

		A60H																
		30	31	32	33	34	36	38	40	42	44	46	48	50	52	54	56	58
Inseam	29																	
	30																	
	32																	
	34																	
	36																	

FLEX DENIM | RELAXED FIT



Mechanical Stretch  
Sits at the Waist  
Fits Over Boots  
Imported



**35005SW** Stonewashed  
**a** 10.75 oz.  
80% Cotton/  
20% Polyester  
Sizes | A52I

		A52I															
		34	36	38	40	42	44	46	48	50	52	54	56	58	60		
Inseam	28																
	30																
	32																
	34																
	36																

		A104																							
		28	29	30	31	32	33	34	35	36	38	40	42	44	46	48	50	52	54	56	58	60	62	64	66
Inseam	28																								
	29																								
	30																								
	32																								
	34																								

DENIM



Left Chest Pocket with Button Through  
Closure and Pencil Slot  
Double Button Adjustable Cuffs  
1/12 Solid  
Imported

ADVANCED COMFORT CHAMBRAY



Two Button Through Chest Pockets  
Straight Back Yoke with Center Box Pleat  
Button Down Collar  
Imported



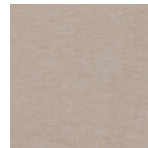
MOVES WITH YOU



**RAL08DM**  
a Stonewash  
6.0 oz  
100% Cotton Denim  
Sizes | 008Y



**RWDS1MG**  
a Mallard Green  
4.5 oz.  
98% Cotton/2% Spandex  
Sizes | 010Y



**RWDS1KP**  
a Kelp  
4.5 oz.  
98% Cotton/2% Spandex  
Sizes | 010Y



**RWDS1AB**  
a Alaskan Blue  
4.5 oz.  
98% Cotton/2% Spandex  
Sizes | 010Y

008Y								
	M	L	XL	XXL	LT	XLT	2XT	3XT
REG	•	•	•	•				
TALL					•	•	•	•

010Y										
	M	L	XL	XXL	LT	XLT	2XT	3XT	3X	4X
REG	•	•	•	•						
TALL					•	•	•	•		
BIG									•	•



UNLINED DENIM JACKETS



Adjustable Waist  
Button Cuffs  
Imported



**RJK30VI** | Vintage Indigo  
**a** 14.5 oz.  
100% Cotton  
Heavyweight Denim  
Sizes | 013C



**RJK30AN** | Antique Indigo  
**a** 14.5 oz.  
100% Cotton  
Heavyweight Denim  
Sizes | 013C

013C												
S	M	L	XL	XXL	LT	XLT	2XT	2X	3X	4X	5X	6X
•	•	•	•	•	•	•	•	•	•	•	•	•

A man with a beard and short brown hair is the central figure. He is wearing a grey quilted vest over a blue long-sleeved shirt and khaki pants. He is holding a pair of black binoculars in his right hand. The background is a natural, outdoor setting with a large, weathered log in the foreground, some rocks, and a blurred landscape of hills and vegetation under bright, natural light.

# Wrangler<sup>®</sup>

ALL TERRAIN GEAR



REINFORCED UTILITY PANT



- Stretch Canvas
- Comfort Soft Waistband
- Regular Seat and Thigh
- Straight Leg
- Gusseted Crotch
- UPF 30
- Wicking
- Articulated & Reinforced Knee
- Reinforced Kickplate
- Secure Zip Utility Pocket
- Hidden Inside Pocket
- Imported

SYNTHETIC UTILITY PANT



- Stretch
- Regular Seat and Thigh
- Straight Leg
- Comfort Soft Waistband
- Gusseted Crotch
- UPF 30
- Durable Water Repellent Finish
- Secure Zip Utility Pocket
- Reinforced Kickplate
- Imported



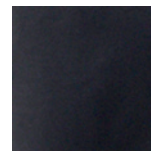
**NS857MR**  
**a**

Morel  
8.9 oz.  
98% Cotton/  
2% Spandex  
Sizes | A24G



**NS857GY**  
**a**

Grey  
8.9 oz.  
98% Cotton/  
2% Spandex  
Sizes | A24G



**NS849CV**  
**a**

Caviar  
5.3 oz.  
96% Nylon/  
4% Spandex  
Sizes | A24G



**NS849ML**  
**a**

Morel  
5.3 oz.  
96% Nylon/  
4% Spandex  
Sizes | A24G

		A24G							
		30	32	34	36	38	40	42	44
Inseam	30	•	•	•	•	•	•	•	•
	32	•	•	•	•	•	•	•	•
	34	•	•	•	•	•	•	•	•



HIKE TO FISH LONG SLEEVE SHIRT



- Stretch Fabric
- Patent Pending Convertible Sleeve System
- Secure Zip Napoleon Pocket
- Vertical Back Mesh Venting
- Glasses Cleaner at Hem
- Utility Tool Loop and Drop in Pocket
- Drop in Pocket with Velcro Closure
- UPF 30 | Wicking
- Imported



**NSB94RF** | Dark Forest  
 3 oz.  
 71% Polyester/  
 29% Nylon  
 Sizes | 010Y



**NSB94BG** | Bering Sea  
 3 oz.  
 71% Polyester/  
 29% Nylon  
 Sizes | 010Y



WESTERN UTILITY LONG SLEEVE SHIRT



- Breathable
- Glasses Cleaner at Hem
- Patent Pending Convertible Sleeve System
- Back Venting at Yoke
- Flap Pockets with Snap Closure
- Stretch Fabric
- Pearl Snaps
- UPF 30
- Wicking
- Imported



**NSB92BR**  
a

Bering Sea  
3 oz.  
71% Polyester/29% Nylon  
Sizes | 010Y

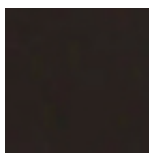
010Y										
	M	L	XL	XXL	LT	XLT	2XT	3XT	3X	4X
REG	•	•	•	•						
TALL					•	•	•	•		
BIG									•	•



TRAIL JACKET



- Water Repellent
- Bonded Fleece
- Adjustable Waist and Cuffs
- Zip Chest Pocket
- Zip Hand Warmer Pockets
- Inner Zip Pocket with Media Port
- Imported

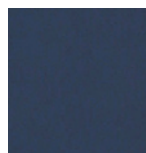


**NSJ17BK**  
**a** | Black  
98% Polyester/  
2% Spandex  
Sizes | 012H

TRAIL VEST



- Water Repellent
- Bonded Fleece
- Adjustable Drawcord Waist
- Zip Chest Pocket
- Zip Hand Warmer Pockets
- Inner Zip Pocket with Media Port
- Imported



**NSV18NV**  
**a** | Navy  
98% Polyester/  
2% Spandex  
Sizes | 012H

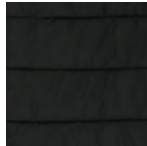
012H												
	S	M	L	XL	XXL	LT	XLT	2XT	3XT	2X	3X	4X
REG	•	•	•	•	•							
TALL						•	•	•	•			
BIG										•	•	•



RANGE JACKET



- Water Repellent
- Insulated Lining
- Two Secure Zip Hand Warmer
- Pockets
- Adjustable Waist
- Elastic Cuffs
- Imported



**NSJ21BK** | Black  
a | 100% Polyester  
 Sizes | 012H

012H												
	S	M	L	XL	XXL	LT	XLT	2XT	3XT	2X	3X	4X
REG	•	•	•	•	•							
TALL						•	•	•	•			
BIG										•	•	•

W

# Wrangler<sup>®</sup>

ACCESSORIES





BELTS

REVERSIBLE  
JEAN BELT



RWB6310  
Brown/Black  
Sizes | A13B  
a

SUEDE  
OVERLAY BELT



RWB4112  
Brown  
Sizes | A07G  
a

CENTER  
PIECED BELT



RWB5242  
Saddle  
Sizes | A07G  
a

TRIPLE  
STITCH BELT



RWB602T  
Brown  
Sizes | A13B  
a

DIAMOND  
STITCHED BELT



RWB2911  
Black  
Sizes | A07G  
a

DOUBLE  
STITCHED BELT



RWB5111  
Black  
Sizes | A07G  
a

WESTERN  
STITCH BELT



RWB601T  
Brown  
Sizes | A07G  
a

EDGE  
EMBOSSED STRAP



RWB2101  
Black  
Sizes | A13B  
a

TRIPLE  
PERFORATED BELT



RWB9851  
Black  
Sizes | A13B  
a



RWB9852  
Brown  
Sizes | A07G  
a

COVERED  
BUCKLE BELT



RWB5222  
Chocolate  
Sizes | A07G  
a

CENTER STITCH  
RIVETED BELT



RWB5312  
Brown  
Sizes | A07G  
a

BASKETWEAVE  
BELT



RWB5932  
Chocolate  
Sizes | A07G  
a

A13B												
32	34	36	38	40	42	44	46	48	50	52	54	56
.	.	.	.	.	.	.	.	.	.	.	.	.

A07G						
32	34	36	38	40	42	44
.	.	.	.	.	.	.

## Wrangler

## MEN'S WESTERN JEANS

STYLE	DESCRIPTION	WAIST	SEAT	THIGH	KNEE	BOTTOM	FRT RISE	BK RISE
13MWZ / 13MGS / 13MAF	Original Fit   George Strait	33	42 1/2	24 7/8	18 1/2	16 3/4	11 7/8	15 1/4
0936 / 933 / 936GS / 936AF	Slim Fit   George Strait	33	39 3/4	23 3/4	17 1/2	16 1/2	11 7/8	14 3/8
0938	Stretch Denim Slim Fit	32 1/2	39 3/4	24 1/8	17 1/2	17	12 1/8	14 3/8
0947	Stretch Denim Regular Fit	32 1/2	40 1/2	24 1/2	17 1/2	17 1/4	11 1/2	15 3/8
0935	Traditional Boot Slim Fit	32 1/2	40 1/8	23 3/4	17	18 1/2	12 1/8	14 7/8
0945	Traditional Boot Regular Fit	33	41	24 1/2	17	18 1/2	12 1/4	15
31MWZ / 31MGS	Cowboy Cut®   George Strait Relaxed Fit	33 1/2	43 1/4	26 3/4	19	17	11 7/8	15 5/8
47MAC / 47MAV	Advanced Comfort Regular Fit	33 1/2	42	25 1/4	18 1/2	16 3/4	11 1/8	15 1/4
36MAC / 36MAV	Advanced Comfort Slim Fit	33 1/2	39 3/4	23 3/8	17 1/2	16 1/2	11	14 3/8
0047 / 47MWZ / 47MGS	Premium Performance   George Strait Regular Fit	33 1/2	42	25 1/4	18 1/2	16 3/4	11	15 1/4
0036 / 36MWZ	Premium Performance Slim Fit	33 1/2	39 3/4	23 3/8	17 1/2	16 1/2	11	14 3/8
28PBR	PBR® Slim Fit	33	39 3/4	24 1/8	17 1/2	16 1/2	11 7/8	14 3/8
00082	Wrangler® Dress	32 1/2	39 7/8	23 5/8	17 1/2	18	11 1/2	14 7/8
00096	Wrangler® Flat Front Casual	33 3/4	42 3/8	26 5/8	19 1/2	17 1/2	11 1/4	14 3/4
00097	Wrangler® Pleated Casual	33 3/4	42 3/8	26 5/8	19 1/2	17 1/2	11 1/4	14 3/4
7MSE	Silver Edition® Boot Cut Regular Fit	34	42 1/4	26	18 1/2	19 1/2	10 1/2	14 1/4
13MSE	Silver Edition® Original fit	33	42 1/2	25 1/2	18 1/2	16 3/4	11 7/8	15 1/4

Wrangler  
RETRO®

## MEN'S WRANGLER RETRO® JEANS

STYLE	DESCRIPTION	WAIST	SEAT	THIGH	KNEE	BOTTOM	FRT RISE	BK RISE
WRT20	Relaxed Boot	33 3/4	43	26 3/4	17 3/4	18 1/2	10 5/8	15 1/8
WRT30	Relaxed Straight	33 3/4	43 1/2	26 1/8	19	18	10 1/2	15
WRT40	Skinny	33 1/2	43 1/4	25	16	15 3/4	9 5/8	14 1/2
77MWZ	Slim Boot	33 3/4	43	24 3/4	16 1/2	18	10 1/2	14 7/8
88MWZ	Slim Straight	33 3/4	43	24 3/4	17	16 1/2	10 1/2	14 7/8

Wrangler  
20X

## MEN'S WRANGLER® 20X® COLLECTION JEANS

STYLE	DESCRIPTION	WAIST	SEAT	THIGH	KNEE	BOTTOM	FRT RISE	BK RISE
01MCW / 01MAC	Active Flex   Advanced Comfort Relaxed	34	45 5/8	26 1/2	19 1/4	18	11 1/2	15
02MCW / 02MAC	Active Flex   Advanced Comfort Slim	34	43	25 1/4	17 5/8	17 1/2	10 5/8	14 1/2
01MWX	Competition Relaxed	34	45 5/8	26 1/2	19 1/4	18	11 1/2	15
02MWX	Competition Slim	34	43	25 1/4	17 5/8	17 1/2	10 5/8	14 1/2
22MWX	Original Fit	32 1/4	42 1/2	25 3/8	18 3/4	16 1/2	11 7/8	15 1/8
23MWX	Relaxed Fit	33	42 1/2	26 1/2	19 1/4	18	11 3/8	14 5/8
33MWX	Extreme Relaxed	34	45 5/8	26 1/2	19 1/2	18 1/2	11 1/2	15
42MWX	Vintage Boot	33 3/4	43	24 3/4	16 1/2	18	10 1/2	14 7/8
44MWX	Slim Straight	33 3/4	43	24 3/4	17	16 1/2	10 1/2	14 7/8

Men's Measurements Based on 32 x 32 Jean



Corresponding Categories

MODERN

20X Snaps, Retro, Rock 47, Western Fashion Snaps

CLASSIC

Checotah, Classics, Logos, Riata, Silver Edition, Work Shirts

RELAXED

20X Buttons, George Strait, Wrinkle Resist, TETWP



BOYS' WESTERN JEANS

STYLE	DESCRIPTION	SIZE	WAIST	SEAT	THIGH	KNEE	BOTTOM	FT RISE	BK RISE	INSEAM
13MWJ	ProRodeo Jean Sizes 1T-7	6 Slim	22	25 1/2	15 3/4	13	12	8 3/8	10	20 3/4
		6 Reg	24	26 3/4	16 3/8	13 1/2	12 1/2	8 3/8	10	20 3/4
13MWB	ProRodeo Jean Sizes 8-16	12 Slim	25	31 7/8	19 5/8	15 1/2	14 3/4	9 7/8	12 3/8	28
		12 Reg	27	33 1/8	20 1/4	16	15 1/2	9 7/8	12 3/8	28



BOYS' WRANGLER RETRO JEANS

STYLE	DESCRIPTION	SIZE	WAIST	SEAT	THIGH	KNEE	BOTTOM	FT RISE	BK RISE	INSEAM
JRT20	Wrangler RETRO® Jean-Boot Cut Sizes 1T-7	6 Reg	24	27 1/8	17	13 1/2	14	7 3/4	10 1/4	21
BRT20	Wrangler RETRO® Jean-Boot Cut Sizes 8-16	12 Reg	27	33 1/2	20 1/2	15 1/2	16 1/2	9 1/2	12 1/4	28 1/2
JRT30	Wrangler RETRO® Jean-Straight Leg Sizes 1T-7	6 Reg	24 1/2	27 5/8	17 5/8	12 7/8	12 3/8	7 1/2	10 1/2	20 3/4
BRT30	Wrangler RETRO® Jean-Straight Leg Sizes 8-16	12 Reg	28	33 1/2	21 5/8	15 3/4	15 1/2	9 1/2	12	28 1/2
88JWZ	Wrangler RETRO® Jean-Slim Straight	6 Reg	24 1/2	27	16 3/8	12 3/4	12 3/4	8 3/8	10 1/2	20 1/4
88BWZ	Wrangler RETRO® Jean-Slim Straight	12 Reg	27	32 3/4	18 5/8	14	14	9 3/8	12 3/8	28 1/2



BOYS' WRANGLER® 20X® COLLECTION JEANS

STYLE	DESCRIPTION	SIZE	WAIST	SEAT	THIGH	KNEE	BOTTOM	FT RISE	BK RISE	INSEAM
22JWX	Original Fit Jean Sizes 1T-7	6 Slim	22	26 1/2	15 3/4	13 3/4	12	8 1/4	10	20 3/4
		6 Reg	24	28	17 1/4	14 1/2	12 1/2	8 1/2	10 1/4	20 3/4
22BWX	Original Fit Jean Sizes 8-16	12 Slim	25	32 3/4	20	16 1/2	13 3/4	9 7/8	12 1/8	28
		12 Reg	27	33 1/4	21 1/2	17 1/4	16 1/2	10 3/8	12 7/8	28
33JWX	Relaxed Fit Jean Sizes 1T-7	6 Reg	24	29	18 3/4	15 3/8	13 1/2	8 7/8	10 1/2	20 3/4
33BWX	Relaxed Fit Jean Sizes 8-16	12 Reg	27	33	22 1/4	17 1/2	16 1/2	10	12 3/4	28
42JWX	Vintage Boot Jean Sizes 1T-7	6 Reg	24 1/2	27 3/8	16 3/8	13 5/8	14 1/2	8 3/8	10 1/2	20 1/4
42BWX	Vintage Boot Jean Sizes 8-16	12 Reg	27 1/2	33 1/4	19 1/4	15 1/8	16 1/2	9 3/8	12 3/8	27
44JWX	Slim Straight	6 Reg	24 1/2	27	16 3/8	12 3/4	12 3/4	8 3/8	10 1/2	20 1/4
44BWX	Slim Straight	12 Reg	27	32 3/4	18 5/8	14	14	9 3/8	12 3/8	28 1/2

Wrangler  
RETRO®

## WRANGLER RETRO®

STYLE	DESCRIPTION	SEAT	THIGH	KNEE	BOTTOM	FT RISE	BK RISE	WAIST
09MWW	Mae Trouser	35 3/4	21 1/4	16 1/2	20 1/2	8 3/4	13 1/8	29 1/8
09MWZ	Mae Bootcut	35 7/8	21 1/4	15 3/8	17 1/2	8 3/4	13 1/8	29 1/4
09PWZ	Plus Mae Bootcut	47 3/8	27 5/8	17 1/2	20.5	11 1/8	17 1/8	41
07MWZ	Sadie Bootcut	36	21 1/4	15 3/8	17 1/2	8 3/8	12 3/4	29 5/8

Wrangler  
THE ULTIMATE  
RIDING JEAN

## THE ULTIMATE RIDING JEAN®

STYLE	DESCRIPTION	SEAT	THIGH	KNEE	BOTTOM	FT RISE	BK RISE	WAIST
WRC10	Cash Bootcut	39	23 3/8	16 1/4	16 1/2	9 1/4	14 1/2	31
WRQ20	Q-Baby Bootcut	36 3/4	22	16 1/4	17.25	9 1/4	14 3/8	29 3/4
WRS40	Shiloh Bootcut	36 7/8	22	15 7/8	17 1/4	7 7/8	14 1/4	30 5/8
WRW60	Willow Bootcut	36 1/4	21 1/4	15 5/8	17	8 3/4	14 3/4	29

AURA  
Individually  
Stunning  
A Vision of Wrangler

## AURA FROM THE WOMEN AT WRANGLER®

STYLE	DESCRIPTION	SEAT	THIGH	KNEE	BOTTOM	FT RISE	BK RISE	WAIST
WUT74	Aura Bootcut	37 7/8	22 5/8	16 1/8	17 5/8	9.25	14 3/4	29 1/2
WUP74	Plus Aura Bootcut	47 5/8	28 1/8	20 5/8	20 5/8	11 3/8	17	41 1/4

## Inseam Reference

Short	30
Average	32
Tall	34

Wrangler

## WRANGLER® ESSENTIALS

STYLE	DESCRIPTION	SEAT	THIGH	KNEE	BOTTOM	FT RISE	BK RISE	WAIST
09MWT	Flatters Curves - Straight Leg	40 1/2	25	15 7/8	15 7/8	8 3/4	14 1/4	31 1/2
09PWT	Plus - Flatters Curves - Straight Leg	47 3/8	27 5/8	17 1/2	17 1/2	11 1/8	17 1/8	41

Wrangler

## BASIC - COWGIRL CUT, WRANGLER BLUES, AS REAL AS WRANGLER

STYLE	DESCRIPTION	SEAT	THIGH	KNEE	BOTTOM	FT RISE	BK RISE	WAIST
14MWZ	Natural Waist Cowboy Cut	38 1/2	21 7/8	16 1/2	15 1/2	11.75	14 1/4	26 3/4
18MWZ	High Rise Cowboy Cut	38 1/2	22 3/4	16 5/8	15 3/4	10 1/4	14 3/4	28 1/2
WB101	Midrise Bootcut	42 3/4	26	19 1/4	15 3/4	11 1/8	15 1/2	30 1/2
WCW84	Midrise Bootcut	38 3/8	23	16 1/8	18 5/8	9 3/4	17 7/8	30 1/2

Women's Fit Guideline Measurements Based on 5/34 for Juniors or 6/34 for Misses. Plus Size Fit Measurements based on 20W/32

Wrangler®

WRANGLER® WOMEN'S TOPS

SIZES	BUST	WAIST	HIP
XS	37 ½	34	39 ½
S	39 ½	36	41 ½
M	41 ½	38	43 ½
L	44 ½	41	46 ½
XL	48	44 ½	50
XXL	52	48 ½	54
XXXL	56	52 ½	58



GIRLS' WRANGLER®

STYLE	DESCRIPTION	SIZE	SEAT	THIGH	KNEE	BOTTOM	FRONT RISE	BACK RISE	WAIST	INSEAM
09MWG	Premium Patch® Sizes 7-14	10 Reg	30	18 ¾	13 ½	17 ¾	7 ¾	11 ¼	26	28
		10 Slim	28 ¼	16 7/8	13 ¼	17 ½	7 1/8	11	24	28



## FIT GUIDELINES

### MEN'S RIGGS WORKWEAR JEANS

STYLE	DESCRIPTION	WAIST	SEAT	THIGH	KNEE	BOTTOM	FRT RISE	BK RISE
3W001	Workhouse Jean - Relaxed Fit	32 3/4	44	28	20	18	12 5/8	15 3/4
3W020	Carpenter Jean - Relaxed Fit	33 1/2	44	27 7/8	20	18	12 5/8	15 3/4
3W030	Utility Jean - Relaxed Fit	32 3/4	44	28 3/8	20	18	12 5/8	15 3/4
3W040	Contractor Jean - Relaxed Fit	32 3/4	44	28 3/8	20	18	12 5/8	15 3/4
3W045	Technician Pant - Relaxed Fit	33 1/2	43	26 1/4	19	17	12 1/8	15 1/2
3W050	Five Pocket Jean - Relaxed Fit	33 1/4	43	26 7/8	19	17	12 1/8	15 1/2
3WAC5	Advanced Comfort 5 Pocket - Relaxed Fit	33	43 1/4	26 1/4	18 1/2	17	11 5/8	15 1/4
3W060	Ranger Pant - Relaxed Fit	33 1/2	44	27 7/8	20	18	12 5/8	15 3/4
3WAC6	Advanced Comfort Ranger Pant - Relaxed Fit	33 1/2	44	27 7/8	20	18	12 5/8	15 3/4
3WA66	Advanced Comfort Lightweight Ranger - Relaxed Fit	33 1/2	44	27 7/8	20	18	12 5/8	15 3/4

### WOMEN'S RIGGS WORKWEAR JEANS

	STYLE	DESCRIPTION	WAIST	SEAT	THIGH	KNEE	BOTTOM	FRT RISE	BK RISE
Based on Sizes 6/32	3WF04	Work Pant	29 1/2	37 3/4	22 3/4	19 5/8	17 1/2	9 3/8	15
Based on Sizes 6/32	3WF05	Five Pocket Boot Cut	30	36 3/8	21 1/4	15 3/8	17 1/2	8 3/4	13 7/8



## FIT GUIDELINES



### MEN'S 20X FR JEANS

STYLE	DESCRIPTION	WAIST	SEAT	THIGH	KNEE	BOTTOM	FT RISE	BK RISE
FR33MWX	Extreme Relaxed	34	46 1/8	26 3/4	19 1/2	18 1/2	11 1/2	15
FR42MW/FRCV42	Vintage Boot	34	43	25 1/4	17 5/8	18 1/2	11	15



### MEN'S RETRO FR JEANS

STYLE	DESCRIPTION	WAIST	SEAT	THIGH	KNEE	BOTTOM	FT RISE	BK RISE
FR77	Slim Boot	34	43	26	17 5/8	18 1/2	10 5/8	14 1/2



### MEN'S RIGGS WORKWEAR FR PANTS

STYLE	DESCRIPTION	WAIST	SEAT	THIGH	KNEE	BOTTOM	FT RISE	BK RISE
FR3W020	Carpenter	32 3/4	44	27 5/8	20	18	12 5/8	15 3/4
FR3W050	Five Pocket	32 3/4	43	26 1/4	19	16 1/2	12 1/8	15 1/2
FRAC50	Advanced Comfort Five Pocket	32 3/4	43	26 1/4	19	16 1/2	12 1/8	15 1/2
FRCV50	Cool Vantage Five Pocket	32 3/4	43	26 1/4	19	16 1/2	12 1/8	15 1/2



### MEN'S WESTERN FR JEANS

STYLE	DESCRIPTION	WAIST	SEAT	THIGH	KNEE	BOTTOM	FT RISE	BK RISE
FR13	Original Fit	33	42 1/2	25	18 1/2	16 3/4	11 7/8	15 1/4
FR31	Relaxed Fit	33	43 1/4	26 1/8	19	17	11 7/8	15 1/8
FR36	Slim Fit	33 1/2	39 3/4	23 3/8	17 1/2	16 1/2	11	14 3/8
FR47	Regular Fit	33 1/2	42	25 3/8	18 1/2	16 3/4	11	15 1/4
FRAC47/FRCV47	Regular Fit	33 1/2	42	25 3/8	18 1/2	16 3/4	11	15 1/4

### WOMEN'S WESTERN FR JEANS

STYLE	DESCRIPTION	WAIST	SEAT	THIGH	KNEE	BOTTOM	FT RISE	BK RISE
FRW10/FRCW1	URJ Cash Fit	32 1/2	40 1/2	24 1/4	16 1/4	16 7/8	9 3/8	14 3/4
FRAC1DI	MAE Boot Fit	31	38	22 1/2	15 5/8	17 3/4	9 1/8	13 1/2

## MEN'S RUGGED WEAR JEANS

STYLE	DESCRIPTION	WAIST	SEAT	THIGH	KNEE	BOTTOM	FRT RISE	BK RISE
39952	Performance Series Regular Fit	32 1/4	42	24 1/8	18 1/4	16	11 1/2	15
35051	Performance Series Relaxed Fit	32 1/4	42 1/2	25 5/8	18 3/4	16 1/2	11 7/8	15 1/8
31000	Relaxed Straight Fit	33 1/2	41 5/8	25 3/4	18 1/2	17 1/2	11 1/4	15 3/4
39902	Classic Fit	32 1/4	42	24 1/8	18 1/4	16	11 1/2	15
35001/35002	Relaxed Fit	34	42	25 7/8	19 1/4	17	11 5/8	15 1/8
35005SW*	Relaxed Fit Flex Denim	34 1/4	44 1/2	26 1/2	19 1/4	17	12 3/8	15 5/8

Fit Guideline Measurements Based on 32/32.

\* 35005SW Based on 34x32

## MEN'S ALL TERRAIN GEAR BY WRANGLER

STYLE	DESCRIPTION	WAIST	SEAT	THIGH	KNEE	BOTTOM	FRT RISE	BK RISE
NS857	Reinforced Utility Pant	33 1/2	41 1/4	24 7/8	17 1/2	16 1/2	11 1/4	15 3/8
NS849	Synthetic Utility Pant	33 1/2	41 1/4	24 7/8	17 1/2	16 1/2	11 1/4	15 3/8

**WESTERN MEN'S****WRANGLER® COWBOY CUT®****Original Fit - Active Flex**

- ⓐ 13MAFGK ..... 5
- ⓐ 13MAFPW ..... 5

**Slim Fit - Active Flex**

- ⓐ 936AFPW ..... 5
- ⓐ 936AFPW ..... 5

**Original Fit**

- ⓐ 0013MWZ ..... 6
- ⓐ 13MWZAW ..... 6
- ⓐ 13MWZCG ..... 6
- ⓐ 13MWZDD ..... 6
- ⓐ 13MWZGH ..... 6
- ⓐ 13MWZGK ..... 6
- ⓐ 13MWZKL ..... 6
- ⓐ 13MWZPW ..... 6
- ⓐ 13MWZTN ..... 6
- ⓐ 13MWZWI ..... 6
- ⓐ 13MWZWK ..... 6
- ⓐ 13MWZXS ..... 6

**Slim Fit**

- ⓐ 0936ATW ..... 7
- ⓐ 0936CHG ..... 7
- ⓐ 0936DEN ..... 7
- ⓐ 0936DSD ..... 7
- ⓐ 0936GBH ..... 7
- ⓐ 0936GBK ..... 7
- ⓐ 0936KCL ..... 7
- ⓐ 0936NTF ..... 7
- ⓐ 0936PWD ..... 7
- ⓐ 0936RST ..... 7
- ⓐ 0936TAN ..... 7
- ⓐ 0936WBK ..... 7
- ⓐ 0936WHI ..... 7

**Relaxed Fit**

- ⓐ 31MWZDN ..... 8
- ⓐ 31MWZGK ..... 8
- ⓐ 31MWZPW ..... 8
- ⓐ 31MWZWK ..... 8

**PREMIUM PERFORMANCE COWBOY****CUT®****Regular Fit**

- ⓐ 0047MWZ ..... 9
- ⓐ 47MWZDS ..... 9
- ⓐ 47MWZPW ..... 9
- ⓐ 47MWZSW ..... 9
- ⓐ 47MAVMR ..... 10
- ⓐ 47MAVVS ..... 10

**Slim Fit**

- ⓐ 36MWZDS ..... 9
- ⓐ 36MWZPD ..... 9
- ⓐ 36MWZSW ..... 9
- ⓐ 36MAVMR ..... 10
- ⓐ 36MAVVS ..... 10

**ADVANCED COMFORT COWBOY CUT®****Regular Fit**

- ⓐ 47MACMS ..... 11
- ⓐ 47MACMT ..... 11
- ⓐ 47MACSB ..... 11

**Slim Fit**

- ⓐ 36MACDT ..... 11
- ⓐ 36MACMS ..... 11

**COWBOY CUT® STRETCH DENIM****Slim Fit**

- ⓐ 0937STR ..... 12
- ⓐ 0938BLK ..... 12
- ⓐ 0938NAV ..... 12

**Regular Fit**

- ⓐ 0947STR ..... 12

**TRADITIONAL BOOT JEANS****Regular Fit**

- ⓐ 0945NAV ..... 13

**Slim Fit**

- ⓐ 0935NAV ..... 13

**PBR® JEANS****Slim Fit**

- ⓐ 28PBRAS ..... 13

**SILVER EDITION® JEANS****Original Fit**

- ⓐ 13MSEDD ..... 14
- ⓐ 13MSEWK ..... 14

**Slim Fit**

- ⓐ 933SEDD ..... 14
- ⓐ 933SEWK ..... 14

**GEORGE STRAIT COWBOY CUT®****Regular Fit**

- ⓐ 47MGSDA ..... 15
- ⓐ 47MGSSB ..... 15

**Original Fit**

- ⓐ 13MGSDS ..... 16
- ⓐ 13MGSHD ..... 16
- ⓐ 13MGSSW ..... 16

**Slim Fit**

- ⓐ 936GSHD ..... 17

**Relaxed Fit**

- ⓐ 31MGSHD ..... 17

**WRANGLER CASUALS****Flat Front**

- ⓐ 00096BK ..... 18
- ⓐ 00096KH ..... 18

**Pleated Front**

- ⓐ 00097BK ..... 18
- ⓐ 00097KH ..... 18

**WRANGLER® DRESS JEANS**

- ⓐ 00082BH ..... 19
- ⓐ 00082BK ..... 19
- ⓐ 00082BN ..... 19
- ⓐ 00082CL ..... 19
- ⓐ 00082GY ..... 19
- ⓐ 00082HG ..... 19
- ⓐ 00082HK ..... 19
- ⓐ 00082HO ..... 19
- ⓐ 00082HT ..... 19
- ⓐ 00082HU ..... 19
- ⓐ 00082KH ..... 19
- ⓐ 00082NV ..... 19
- ⓐ 00082TN ..... 19

**WRANGLER® 20X® COLLECTION****Competition Jean | Relaxed**

- ⓐ 01MWXDB ..... 20
- ⓐ 01MWXRW ..... 20

**Competition Jean | Slim**

- ⓐ 02MWXDL ..... 20
- ⓐ 02MWXPY ..... 20

**Advanced Comfort Competition****Relaxed**

- ⓐ 01MACBA ..... 21
- ⓐ 01MACRB ..... 21

**Advanced Comfort Competition****Slim**

- ⓐ 02MACBA ..... 21
- ⓐ 02MACRB ..... 21

**Original Fit**

- ⓐ 22MWXVM ..... 22

**Relaxed Fit**

- ⓐ 23MWXVB ..... 22

**Extreme Relaxed Fit**

- ⓐ 33MWXAB ..... 23
- ⓐ 33MWXVM ..... 23
- ⓐ 33MWXLW ..... 23

**Vintage Boot**

- ⓐ 42MWXBT ..... 24
- ⓐ 42MWXGG ..... 24
- ⓐ 42MWXLB ..... 24
- ⓐ 42MWXMD ..... 24
- ⓐ 42MWXRD ..... 24

**Slim Straight**

- ⓐ 44MWXDN ..... 25
- ⓐ 44MWXMA ..... 25
- ⓐ 44MWXRB ..... 25

**WRANGLER RETRO® JEANS****Relaxed Boot**

- ⓐ WRT20AB ..... 27
- ⓐ WRT20CR ..... 26
- ⓐ WRT20FL ..... 27
- ⓐ WRT20JH ..... 27
- ⓐ WRT20RT ..... 27
- ⓐ WRT20TB ..... 27
- ⓐ WRT20WB ..... 26

**Slim Boot**

- ⓐ WLT77LY ..... 28
- ⓐ 77MWZBB ..... 29
- ⓐ 77MWZBR ..... 28
- ⓐ 77MWZDX ..... 28
- ⓐ 77MWZGL ..... 29
- ⓐ 77MWZRW ..... 29
- ⓐ 77MWZWO ..... 29

**Slim Straight**

- ⓐ WLT88BZ ..... 30
- ⓐ WLT88CW ..... 30
- ⓐ 88MWZDK ..... 30
- ⓐ 88MWZJK ..... 30
- ⓐ 88MWZJM ..... 31
- ⓐ 88MWZMN ..... 31
- ⓐ 88MWZPD ..... 31
- ⓐ 88MWZRT ..... 31

**WESTERN MEN'S SHIRTS****AUTHENTIC COWBOY CUT®****WESTERN WORKSHIRTS**

- ⓐ 70127BT ..... 33
- ⓐ 70127MW ..... 33
- ⓐ 70127SW ..... 33
- ⓐ 70130MW ..... 33
- ⓐ 70131MW ..... 32
- ⓐ 70136MW ..... 33
- ⓐ MS1039W ..... 33
- ⓐ MS1040B ..... 33
- ⓐ MS3127B ..... 32
- ⓐ MS70119 ..... 33
- ⓐ MS70919 ..... 33

**BASIC TWILL WORKSHIRTS**

- ⓐ 70140MW ..... 34
- ⓐ MS70319 ..... 34
- ⓐ MS70519 ..... 34
- ⓐ MS70619 ..... 34
- ⓐ MS70719 ..... 34
- ⓐ MS70819 ..... 34
- ⓐ MS71319 ..... 34
- ⓐ MS71419 ..... 34
- ⓐ MS71519 ..... 34

**PAINTED DESERT® BASIC WESTERN****WORKSHIRTS**

- ⓐ 71135CH ..... 34
- ⓐ MP3482T ..... 34
- ⓐ MP3522R ..... 34
- ⓐ MP4282X ..... 34

**WRANGLER® ADVANCED COMFORT****WORKSHIRTS**

- ⓐ MACW01D ..... 35
- ⓐ MACW02G ..... 35
- ⓐ MACW03H ..... 35
- ⓐ MACW04E ..... 35
- ⓐ MACW05B ..... 35
- ⓐ MACW06R ..... 35
- ⓐ MACW08T ..... 35
- ⓐ MACW17X ..... 35

**SPORT WESTERN SNAP SHIRTS**

- ⓐ 71105BK ..... 36
- ⓐ 71105WH ..... 36
- ⓐ 75214BK ..... 36
- ⓐ 75221WH ..... 36
- ⓐ 75222BL ..... 36
- ⓐ 75226TN ..... 36
- ⓐ 75740WN ..... 36
- ⓐ 75742TN ..... 36
- ⓐ 75744TQ ..... 36

- ⓐ 75746RD ..... 36

**DRESS WESTERN SNAP SHIRTS**

- ⓐ 71125CP ..... 37
- ⓐ 71130CS ..... 37
- ⓐ 73125HA ..... 37
- ⓐ 73130HA ..... 37

**SPORT WESTERN SNAP SHIRTS**

- ⓐ 75201AA ..... 37
- ⓐ 75204PP ..... 37
- ⓐ 75932PP ..... 37
- ⓐ 75951PP ..... 37
- ⓐ 76201AA ..... 37
- ⓐ 76204PP ..... 37
- ⓐ 76932PP ..... 37
- ⓐ 76951PP ..... 37

**GEORGE STRAIT COLLECTION****Year Round**

- ⓐ MGS242W ..... 38

**Hanging**

- ⓐ MGS268W ..... 38
- ⓐ MGS269X ..... 38
- ⓐ MGS270H ..... 38
- ⓐ MGS271K ..... 38
- ⓐ MGS272G ..... 38
- ⓐ MGS273B ..... 38
- ⓐ MGS274R ..... 38

**WESTERN LOGO SHIRTS**

- ⓐ MP2327N ..... 39
- ⓐ MP2338X ..... 39
- ⓐ MP1316M ..... 39

**TOUGH ENOUGH TO WEAR PINK****SHIRTS**

- ⓐ MTP242K ..... 40
- ⓐ MTP259M ..... 40

**SILVER EDITION® WESTERN SHIRTS**

- ⓐ 75045WH ..... 40
- ⓐ 75046BK ..... 40

**WRANGLER® 20X® ADVANCED****COMFORT PERFORMANCE POLOS**

- ⓐ MACP01X ..... 41
- ⓐ MACP06N ..... 41
- ⓐ MACP07H ..... 41
- ⓐ MACP08B ..... 41

**WRANGLER RETRO PREMIUM**

- ⓐ MVR458D ..... 42
- ⓐ MVR502T ..... 42
- ⓐ MVR507J ..... 42
- ⓐ MVR531W ..... 42
- ⓐ MVR532X ..... 42

**MEN'S WRANGLER® OUTERWEAR****Unlined Denim Jacket**

- ⓐ 74145PW ..... 43

**WESTERN WOMEN'S****WRANGLER RETRO®****Mae | Boot Cut**

- ⓐ 09MWZDW ..... 45
- ⓐ 09MWZHT ..... 45
- ⓐ 09MWZJD ..... 45
- ⓐ 09MWZKM ..... 45
- ⓐ 09MWZMS ..... 45

**Mae | Plus Sizes**

- ⓐ 09PWZKM ..... 45
- ⓐ 09PWZMS ..... 45

**Mae | Trouser**

- ⓐ 09MWWAB ..... 46

**Sadie | Boot Cut**

- ⓐ 07MWZDW ..... 46
- ⓐ 07MWZGS ..... 46

**THE ULTIMATE RIDING JEAN®****WILLOW | Performance Waist**

- ⓐ WRW60DS ..... 47

- ⓐ WRW60LE ..... 47
- ⓐ WRW60RA ..... 47

**Q-BABY | Boot Cut**

- ⓐ WRQ20BL ..... 48
- ⓐ WRQ20DD ..... 48
- ⓐ WRQ20NR ..... 48
- ⓐ WRQ20ST ..... 48
- ⓐ WRQ20TB ..... 48
- ⓐ WRQ20WI ..... 48
- ⓐ WRQ20WS ..... 48

**Q-BABY | Plus Sizes**

- ⓐ WPQ20NR ..... 48

**SHILOH | Boot Cut**

- ⓐ WRS40TA ..... 49

**CASH | Boot Cut**

- ⓐ WRC10AS ..... 49
- ⓐ WRC100N ..... 49

**AURA FROM THE WOMEN AT****WRANGLER®****Instantly Slimming™ Bootcut**

- ⓐ WUT74AG ..... 50
- ⓐ WUT74BL ..... 50
- ⓐ WUT74BT ..... 50
- ⓐ WUT74TM ..... 50
- ⓐ WUB420S ..... 50

**Instantly Slimming™ Plus Sizes**

- ⓐ WUP74AG ..... 50
- ⓐ WUP74BL ..... 50

**WRANGLER JEANS****Straight Leg**

- ⓐ 09MWTDS ..... 51
- ⓐ 09MWTMS ..... 51

**Boot Cut**

- ⓐ 09MWZAH ..... 51
- ⓐ 09MWZBK ..... 51
- ⓐ 09MWZDO ..... 51
- ⓐ 09MWZMB ..... 51

**Plus Sizes**

- ⓐ 09PWTD ..... 51
- ⓐ 09PWTD ..... 51
- ⓐ 09MWP ..... 51
- ⓐ 09PWZDO ..... 51

**WRANGLER COWGIRL CUT****Slim Fit**

- ⓐ 014MWZG ..... 52

**Slim Fit | Stretch**

- ⓐ 18MWZSW ..... 52

**WRANGLER® BLUES**

-



@ LWD708D ..... 54  
 @ LWD709D ..... 54  
**Jackets**  
 @ LWJ370D ..... 55  
 @ LWJ701D ..... 54

**YOUTH**

**BOYS' ORIGINAL PRORODEO JEANS**

@ 13MWBBK ..... 59  
 @ 13MWBDI ..... 59  
 @ 13MWBTD ..... 59  
 @ 13MWBWS ..... 59  
 @ 13MWJBC ..... 59  
 @ 13MWJDI ..... 59  
 @ 13MWJWS ..... 59  
 @ 13MWJTN ..... 59  
 @ 13MWZBP ..... 59  
 @ 13MWZJP ..... 59  
**Active Flex**  
 @ 13BAFGK ..... 59  
 @ 13JAFGK ..... 59  
 @ 13BAFPW ..... 59  
 @ 13JAFPW ..... 59

**ORIGINAL STUDENT'S PRORODEO**

@ 13MWSPI ..... 60

**GEORGE STRAIT COWBOY CUT®**

@ 13BGSHD ..... 60  
 @ 13JGSHD ..... 60

**BOYS' WRANGLER RETRO® JEANS**

**Relaxed Boot**  
 @ BRT20FL ..... 61  
 @ BRT20NS ..... 61  
 @ BRT20OW ..... 61  
 @ JRT20FL ..... 61  
 @ JRT20NS ..... 61  
 @ JRT20OW ..... 61  
**Relaxed Straight**  
 @ BRT30EB ..... 62  
 @ BRT30RR ..... 62  
 @ JRT30EB ..... 62  
 @ JRT30RR ..... 62  
**Slim Straight**  
 @ 88BWZBZ ..... 62  
 @ 88BWZJM ..... 62  
 @ 88JWZBZ ..... 62  
 @ 88JWZJM ..... 62

**BOYS' WRANGLER® 20X® JEANS**

**Vintage Boot**  
 @ 42BWXBB ..... 64  
 @ 42BWXCL ..... 64  
 @ 42BWXGG ..... 64  
 @ 42BWXMD ..... 64  
 @ 42JWXBB ..... 64  
 @ 42JWXCL ..... 64  
 @ 42JWXGG ..... 64  
 @ 42JWXMD ..... 64  
**Extreme Relaxed Fit**  
 @ 33BWXVM ..... 63  
 @ 33JWXVM ..... 63

**BOYS' WESTERN SHIRTS**

**Classics**  
 @ BG268WH ..... 65  
 @ BG274RD ..... 65  
 @ BG273BL ..... 65  
 @ BG269BK ..... 65  
**Boys' Work Western**  
 @ BS1039W ..... 66  
 @ BW1251B ..... 66  
 @ BW1271B ..... 66  
 @ BW1321R ..... 66  
**Dress Western Snaps**  
 @ 201WAAL ..... 67  
 @ 203WAAL ..... 67  
 @ 204WHS ..... 66  
 @ 206WAAL ..... 67

**BOYS' DENIM JACKET**

@ 84145PW ..... 67

**GIRLS' WESTERN BOTTOMS**

@ 09MWGGB ..... 69  
 @ 09MWGER ..... 69  
 @ 09MWGES ..... 69  
 @ 09MWGHS ..... 69  
 @ 09MWGMS ..... 69  
 @ 09MWGMR ..... 69

**GIRLS' WESTERN TOPS**

@ GW1003K ..... 70  
 @ GW7001W ..... 70

**WRANGLER BABY**

**Girls**  
 @ PQJ113D ..... 71  
**Boys**  
 @ PQ1371D ..... 71  
 @ PQ4165D ..... 71  
 @ PQJ136D ..... 71  
 @ PQK126D ..... 71  
**Diaper Cover**  
 @ 11MWIPW ..... 71

**WORKWEAR**

**WOMEN'S WORKWEAR**

**Riggs Womens Work Pant**  
 @ 3WF04BR ..... 73  
 @ 3WF04CH ..... 73  
**Riggs Womens 5pkt Bootcut Jean**  
 @ 3WF05DR ..... 73  
 @ 3WF05LS ..... 73  
**Riggs Womens 3/4 Sleeve Performance T-Shirts**  
 @ 3WF75BG ..... 74  
 @ 3WF75SG ..... 74  
**Riggs Womens Short Sleeve Performance T-Shirts**  
 @ 3WF70CR ..... 74  
 @ 3WF70CH ..... 74  
 @ 3WF70GR ..... 74  
**Riggs Womens Work Jacket**  
 @ 3WF18CH ..... 75  
 @ 3WF18BK ..... 75

**MEN WORKWEAR**

**Advanced Comfort Five Pocket Jean - Relaxed Fit**  
 @ 3WAC5DT ..... 76  
 @ 3WAC5MS ..... 76  
**Advanced Comfort Lightweight Ranger Pant**  
 @ 3WA66CH ..... 77  
 @ 3WA66BR ..... 77  
**Ranger Pant**  
 @ 3W060BR ..... 77  
 @ 3W060BL ..... 77  
 @ 3W060DB ..... 77  
 @ 3W060LD ..... 77  
 @ 3W060ST ..... 77  
 @ 3W060NY ..... 77  
**Technician Pant**  
 @ 3W045CH ..... 78  
 @ 3W045DK ..... 78  
 @ 3W045LD ..... 78  
**Carpenter Jean**  
 @ 3W020AI ..... 79  
 @ 3W020BL ..... 79  
 @ 3W020BR ..... 79  
 @ 3W020DK ..... 79  
 @ 3W020LD ..... 79  
 @ 3W020ST ..... 79  
 @ 3W020VI ..... 79  
**Utility Jean**  
 @ 3W030AI ..... 80  
**Basic 5 Pocket - Relaxed Fit**  
 @ 3W050AI ..... 80  
**Workhorse Jean - Relaxed Fit**

@ 3W001AI ..... 81  
**Contractor Jean**  
 @ 3W040AI ..... 81  
**Long Sleeve Twill Work Shirt**  
 @ 3W501BG ..... 82  
 @ 3W501BK ..... 82  
 @ 3W501FG ..... 82  
 @ 3W501KH ..... 82  
 @ 3W501NV ..... 82  
**Long Sleeve Work Shirt**  
 @ 3W510AN ..... 83  
**Chambray Work Shirt**  
 @ 3W531BL ..... 83  
**Short Sleeve Pocket Performance T-Shirt**  
 @ 3W701CR ..... 84  
 @ 3W701HG ..... 84  
 @ 3W701NK ..... 84  
 @ 3W701OB ..... 84  
**Short Sleeve Pocket T-Shirt**  
 @ 3W700AH ..... 84  
 @ 3W700BG ..... 84  
 @ 3W700BK ..... 84  
 @ 3W700CH ..... 84  
 @ 3W700FG ..... 84  
 @ 3W700NV ..... 84  
 @ 3W700SG ..... 84  
 @ 3W700SO ..... 84  
**Long Sleeve Henley**  
 @ 3W750AH ..... 85  
 @ 3W750BG ..... 85  
 @ 3W750CH ..... 85  
 @ 3W750FG ..... 85  
 @ 3W750NV ..... 85  
 @ 3W750OH ..... 85  
**WRANGLER FR FLAME RESISTANT**  
**Wrangler Advanced Comfort**  
 @ FRAC47D ..... 88  
**Wrangler Cool Vanatage**  
 @ FRCV47T ..... 88  
**Original Fit**  
 @ FR13MWZ ..... 88  
 @ FR13MMS ..... 88  
**Relaxed Fit**  
 @ FR31MWZ ..... 89  
**Slim Fit**  
 @ FR36MWZ ..... 89  
**Regular Fit - Lightweight**  
 @ FR47MLW ..... 89  
**Retro Advanced Comfort**  
 @ FR77MCN ..... 90  
 @ FR77MTM ..... 90  
**Retro - Slim Boot**  
 @ FR77MON ..... 90  
**20X Advanced Comfort**  
 @ FRAC42D ..... 91  
**20X Regular Fit - Cool Vantage**  
 @ FRCV42V ..... 92  
**20X Extreme Relaxed Fit**  
 @ FR33MWX ..... 92  
**20X Vintage Boot**  
 @ FR42MWD ..... 93  
 @ FR42MWR ..... 93  
 @ FR42MWM ..... 93  
**RIGGS Relaxed Fit - Cool Vantage**  
 @ FRCV50S ..... 94  
**RIGGS Carpenter Jean - Relaxed Fit**  
 @ FR3W020 ..... 95  
**RIGGS 5 Pocket Relaxed Fit**  
 @ FR3W050 ..... 95  
**RIGGS Advanced Comfort 5 Pocket Relaxed Fit**  
 @ FRAC50M ..... 95  
**Wrangler Work Shirt**  
 @ FR12127 ..... 96  
 @ FR12140 ..... 96  
 @ FR122BW ..... 96

@ FR123BL ..... 96  
 @ FR124MM ..... 96  
 @ FR127CH ..... 96  
 @ FR131RD ..... 96  
**Baseball Henley Knit Shirt - 2112**  
 @ FR161BL ..... 96  
 @ FR161GY ..... 96  
 @ FR161RD ..... 96  
**RIGGS Work Shirt**  
 @ FR3W5KH ..... 97  
 @ FR3W5GY ..... 97  
**RIGGS Long Sleeve Henley - HRC2**  
 @ FR3W8NV ..... 97  
 @ FR3W8GY ..... 97  
**Women's FR Jeans**  
 @ FRW10BL ..... 98  
 @ FRW10DD ..... 98  
 @ FRW10CH ..... 98  
 @ FRW10RN ..... 98  
**Women's Advanced Comfort Mae**  
 @ FRAC1DI ..... 98  
**Women's Workshirt**  
 @ FRLW05K ..... 99

**WRANGLER RUGGED WEAR**

**Performance Series 5 Pocket Regular Fit**  
 @ 39952BW ..... 101  
 @ 39952DI ..... 101  
**Relaxed Fit**  
 @ 35051LS ..... 101  
 @ 35051MS ..... 101  
 @ 35051DS ..... 101  
**Relaxed Straight Fit**  
 @ 31000GK ..... 102  
 @ 31000MT ..... 102  
 @ 31000TR ..... 102  
 @ 31000UN ..... 102  
**Classic Fit Jeans**  
 @ 39902RI ..... 102  
 @ 39902PW ..... 102  
 @ 39902OB ..... 102  
**Relaxed Fit Jeans**  
 @ 35001AI ..... 103  
 @ 35001AN ..... 103  
 @ 35001GI ..... 103  
 @ 35002OB ..... 103  
 @ 35001VI ..... 103  
**Flex Denim Relaxed Fit**  
 @ 35005SW ..... 103  
**RUGGEDWEAR TOPS**  
**Denim**  
 @ RAL08DM ..... 104  
**Short Sleeve Chambray Shirt**  
 @ RWDS1AB ..... 104  
 @ RWDS1KP ..... 104  
 @ RWDS1MG ..... 104  
**Unlined Jackets**  
 @ RJK30VI ..... 105  
 @ RJK30AN ..... 105

**ATG x WRANGLER**

**Reinforced Utility Pant**  
 @ NS857GY ..... 107  
 @ NS857MR ..... 107  
**Synthetic Utility Pant**  
 @ NS849CV ..... 107  
 @ NS849ML ..... 107  
**Long Sleeve Hike to Fish Shirt**  
 @ NSB94BG ..... 108  
 @ NSB94RF ..... 108  
**Long Sleeve Western Utility Shirt**  
 @ NSB92BR ..... 109  
**Trail Jacket**  
 @ NSJ17BK ..... 110

**Trail Vest**  
 @ NSV18NV ..... 110  
**Range Jacket**  
 @ NSJ21BK ..... 111  
**BELTS**  
 @ RWB2101 ..... 113  
 @ RWB2911 ..... 113  
 @ RWB4112 ..... 113  
 @ RWB5111 ..... 113  
 @ RWB5222 ..... 113  
 @ RWB5242 ..... 113  
 @ RWB5312 ..... 113  
 @ RWB5932 ..... 113  
 @ RWB601T ..... 113  
 @ RWB602T ..... 113  
 @ RWB6310 ..... 113  
 @ RWB9851 ..... 113  
 @ RWB9852 ..... 113

## WRANGLER SALES OFFICES

Greensboro	400 North Elm Street • P.O. Box 21488 Greensboro, NC 27420-1488 Phone: 336.332.3400
New York	Kontoor Brands 1407 Broadway • Suite 922 New York, NY 10018 Phone: 646.989.9400
Dallas	World Trade Center 2050 N. Stemmons Freeway Room 7004 (Shipping Address) Unit 162 (Mailing Address) Dallas, TX 75207-3206 Phone: 214.637.1271 Fax: 214.637.1528
Denver	Denver Merchandise Mart 451 E. 58th Avenue • Room 3354 Denver, CO 80216 Phone: 303.296.9716
Wrangler de Mexico, SA de CV	Edificio Reforma Plus Paseo de la Reforma 2620, Piso 7 Colonia Lomas Altas Mexico, D.F., CP 11950 Mexico Phone: 52.55.5081.1500
<b>PRODUCT CATEGORIES</b>	
Men's & Boys' Small Leather Goods and Western Belts	Spirit Leatherworks • 100 Cap Court • Eugene, OR 97402 Phone: 877-467-0436
Headwear	Top of the World • 3001 36th NW • Norman, OK 72072 Contact: jfox@towlicensed.com Phone: 877-302-5906
Watches	Paradox • 935 Broadway, 2nd Floor • New York, NY 10010 Phone: 800-847-9851
Socks	Carolina Hosiery Mills, Inc • 2316 Tucker Street • Burlington, NC 27215 Contact: Ernie Koury   ekoury@carolinahosiery.com Krista Hall   khall@carolinahosiery.com Phone: 336.226.5581
Socks	FBF Originals • 1201 South Ohio • Street Martinsville, IN 46151 Contact: Brian Lowe   blowe@fbforiginals.com Phone: 765.349.7474
Gloves	Latoplast • 1661 Finfar Ct • Mississauga, ON L5J 4K1 Contact: Dawn Anastasi   danastasi@forcefieldcanada.com Phone: 905.823.6150
Home Goods	Carstens, Inc. • PO Box 334 612 • E Fairhaven Ave. • Burlington, WA 98233 8393 W Harmonica Way Boise, ID 83709 Contact: Jane Tharpe   janetharpe@gmail.com Phone: 800-344-3878



As Soon As Possible

Designated styles in this catalog are available for immediate shipping.

As Soon As Possible orders will ship in five (5) to ten (10) days after being entered.

As Soon As Possible orders can be communicated by:

**Telephone**

1.800.888.8010

**Fax**

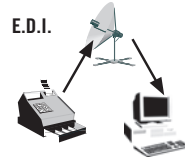
1.800.283.3113

**Mail**

Wrangler® Order Entry  
P.O. Box 21488  
Greensboro, NC 27420

**Email**

Customer Service  
Wrangler.cs@kontoorbrands.com

**E.D.I.**

For information on establishing an authorized Electronic Data Interchange (E.D.I.) Relationship, Contact your Sales Representative, or Wrangler Customer Service at 1.800.888.8010.

**CRIS/R.E.D.I.**

For pre-approved, authorized dealers, Wrangler® makes an inexpensive, hand-held computer available under our new Cloud Replenishment Inventory and Sales systems (CRIS). This will be replacing our existing (R.E.D.I.) program and equipment.

For more information:

Call: 1.800.337.7334

Email: helpmecris@kontoorbrands.com

Fax: 1.800.344.4907

Contact your Wrangler® sales representative for more information on any of these programs.

**Co-Op Advertising**

Wrangler supports local advertising of Wrangler® products with an attractive Co-Op Plan. Please contact your Wrangler® Sales Representative or refer to the current Wrangler® Plan on our website, Traders Pass, at traderspass.com.

**Selling Terms**

1. Receipt of the acknowledgment by the buyer shall constitute an acceptance of prices, terms and conditions of sale.
2. All orders are subject to acceptance and confirmation by our general offices in Greensboro, North Carolina.
3. Deliveries against orders are subject to credit approval at time of shipment.
4. The seller reserves the right to cancel, make reasonable substitution, or back order any portion of order. Freight on back orders will be buyer's expense.
5. No anticipation allowed. Terms are net 30 days from date of shipment. F.O.B. shipping point with title passing to buyer upon delivery to carrier. The seller reserves the right to ship the order from any of its shipping points without any allowances for equalization of freight.
6. Prices on the unshipped portion of any order are subject to any cost increases caused by federal legislation at the time legislation becomes effective.
7. Prices are subject to change or withdrawal without notice.
8. Claims for shipment on merchandise lost or damaged in transit are to be filed against the carrier by the buyer.
9. An order cannot be canceled in whole or in part after 20 days beyond the "entered date" found on your acknowledgment.

**Toll-Free Order Number**

We maintain a special toll-free telephone number for placing orders and obtaining delivery or pricing information. Someone is always there to help you during normal business hours.

Call 1.800.888.8010 or Fax 1.800.283.3113  
(Calls may be monitored for quality assurance.)

**Toll-Free Consumer Relations Number**

Call 1.888.784.8571 Monday–Friday, 8 am to 6pm EST. Consumers may also contact us by email at wranglerweb@kontoorbrands.com.

**Product Warranty**

Every Wrangler® product carries a one-year warranty, which covers actual defects in materials or workmanship. Consumer satisfaction is a key element in the successful marketing of Wrangler® merchandise at retail.

**Return Goods Policy**

Only authorized returns will be accepted by our shipping locations. In the event you find it necessary to request permission to return goods, authorization must be obtained from:

**Product Warranty**

P.O. Box 21488

Greensboro, North Carolina 27420

- Request for return goods must be made within 30 days from date of shipment.
- Authorization for return will not be made on merchandise shipped more than 30 days prior to the request for return.
- Correspondence pertaining to return goods should furnish the invoice number, reason for request for return, and other sufficient information so that immediate consideration can be given for use on the returned merchandise. Only returns with this label will be accepted at our shipping locations.
- Any merchandise returned after proper authorization must be received at our plants in at least as good condition as when originally shipped. Our receiving plants will have the authority to judge on this matter and to recommend adjustments in credits if such be deemed appropriate. Defectives from Retail Account should be shipped to:

**Distribution Center**

12173 Rojas Street

El Paso, TX 79936

- Small parcel post returns of defective merchandise from consumers are excepted from this policy and may be sent without authorization to:

**Wrangler® Quality Control Department**

1421 South Elm/Eugene Street,  
Greensboro, North Carolina 27406

- Your cooperation with this policy will be greatly appreciated and will help us provide prompt and efficient service.  
Our hours of operation are Monday–Friday 8 am to 5 pm EST

Wrangler



Wrangler **FR**  
FLAME RESISTANT

Wrangler  
RUGGED WEAR

